

# B405

## BOTHELL 405

11711-11807 NORTH CREEK PARKWAY S | BOTHELL, WA



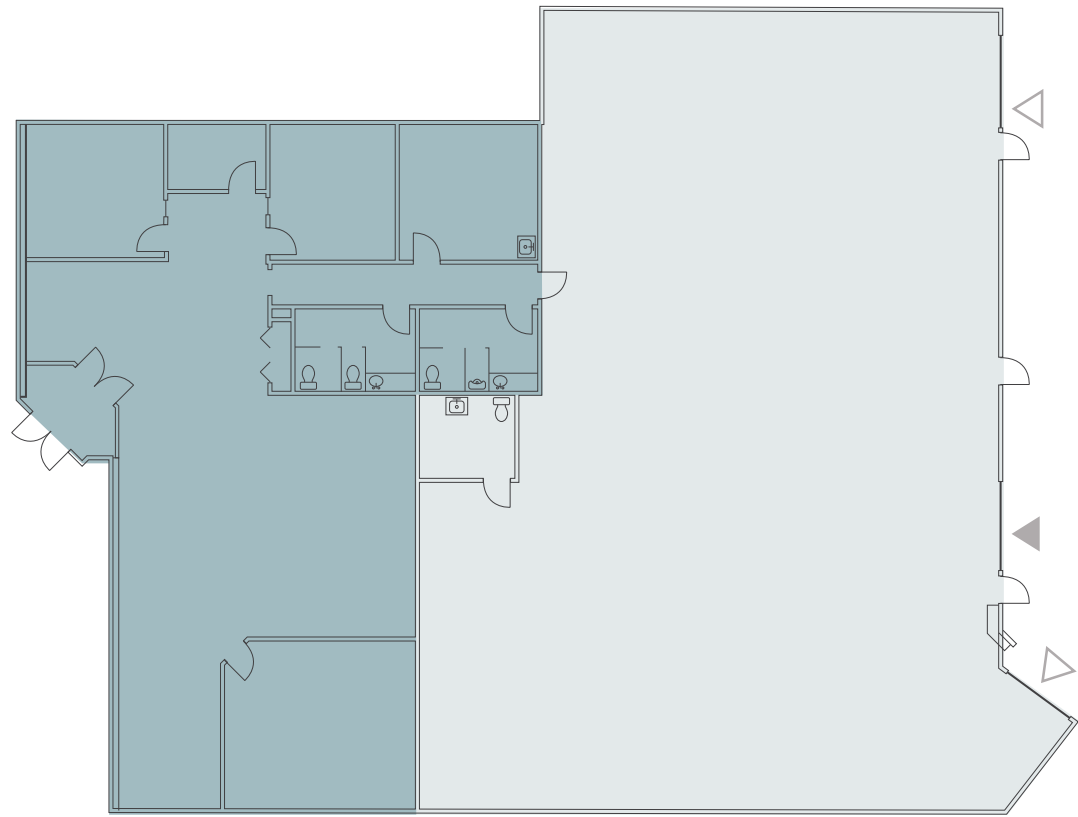
## SUITE D112

8,285 SF  
3,233 SF Office  
5,052 SF Warehouse

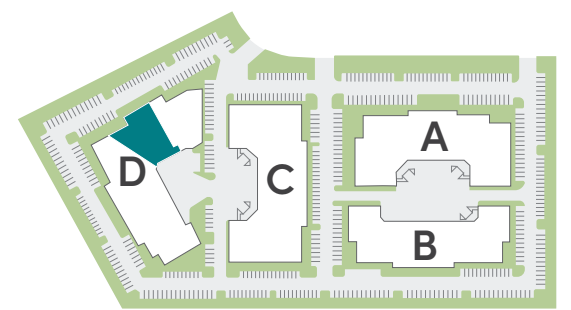
Approx. 15' Clear Height

Available Now

Market Ready renovation recently completed; new carpet, paint, lighting and white boxed warehouse. Grade level and Dock High Loading



WAREHOUSE OFFICE DOCK-HIGH GRADE-LEVEL



**TYLER SLONE** | 425.274.4281  
SLONE@BRODERICKGROUP.COM

**ERIC MEUSSNER** | 425.274.4282  
MEUSSNER@BRODERICKGROUP.COM

**JEFF LIVINGSTON** | 425.274.4288  
LIVINGSTON@BRODERICKGROUP.COM