

B405

BOTHELL 405

11711-11807 NORTH CREEK PARKWAY S | BOTHELL, WA



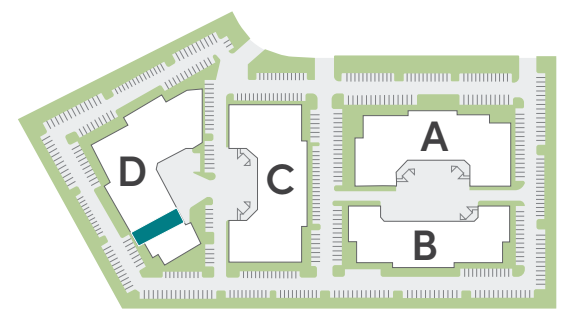
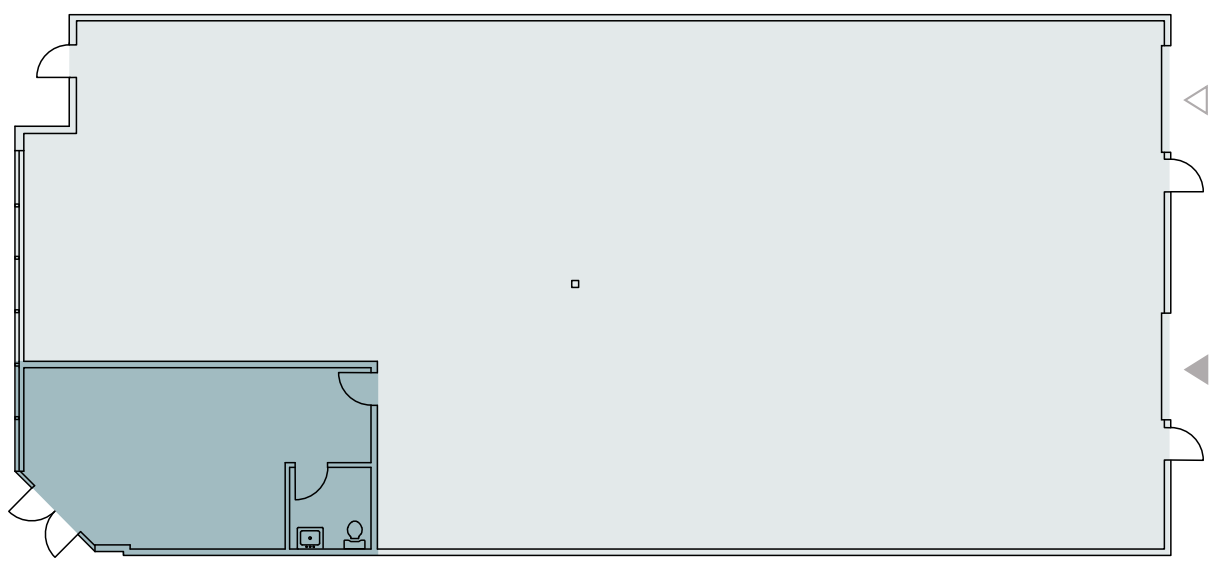
SUITE D104

5,262 SF
550 SF Office
4,712 SF Warehouse

Approx. 15' Clear Height

Available 9/1/26

Rare small storage facility with
grade level and dock high
loading



  WAREHOUSE  OFFICE  DOCK-HIGH  GRADE-LEVEL



TYLER SLONE | 425.274.4281
SLONE@BRODERICKGROUP.COM

ERIC MEUSSNER | 425.274.4282
MEUSSNER@BRODERICKGROUP.COM

JEFF LIVINGSTON | 425.274.4288
LIVINGSTON@BRODERICKGROUP.COM