

# B405

## BOTHELL 405

11711-11807 NORTH CREEK PARKWAY S | BOTHELL, WA



## SUITE C110

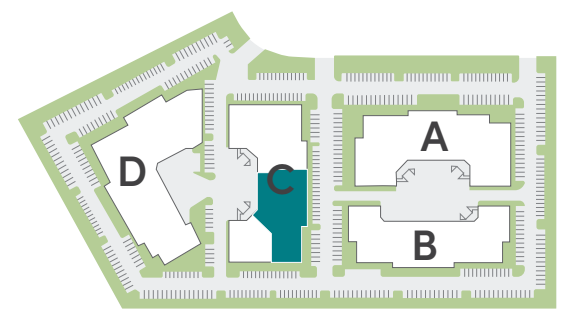
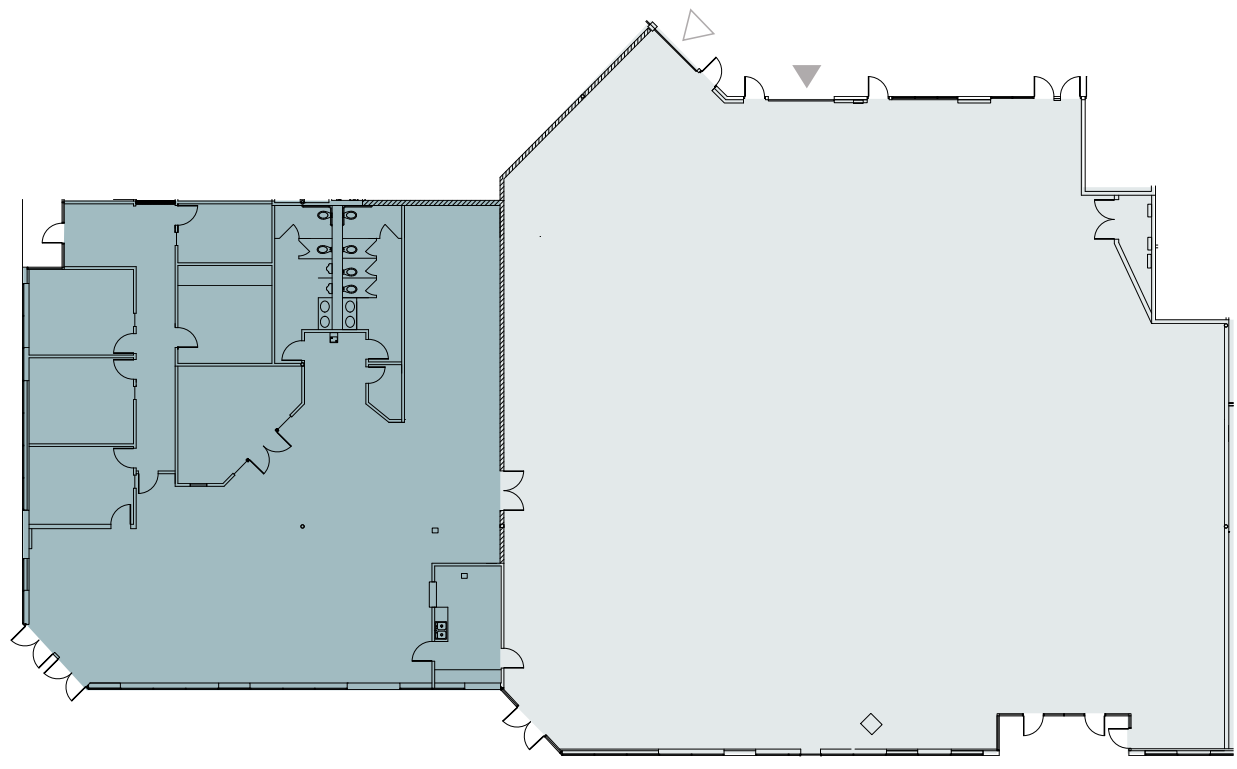
15,938 SF  
5,417 SF Office  
10,521 SF Warehouse

Dock High & Grade Level Loading

Approx. 20' Clear Height

Available 11/1/26

Unique Exposed Ceiling Office  
+ High Bay Warehouse suitable  
for variety of R&D & Office/  
Warehouse uses



WAREHOUSE OFFICE DOCK-HIGH GRADE-LEVEL



**TYLER SLONE** | 425.274.4281  
SLONE@BRODERICKGROUP.COM

**ERIC MEUSSNER** | 425.274.4282  
MEUSSNER@BRODERICKGROUP.COM

**JEFF LIVINGSTON** | 425.274.4288  
LIVINGSTON@BRODERICKGROUP.COM