

B405

BOTHELL 405

11711-11807 NORTH CREEK PARKWAY S | BOTHELL, WA



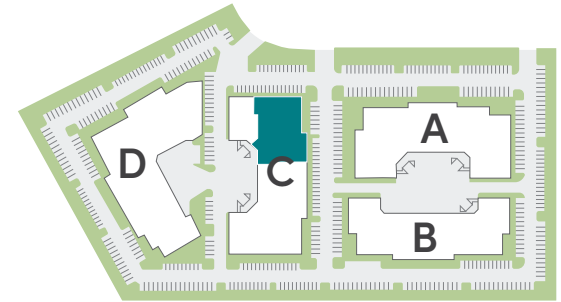
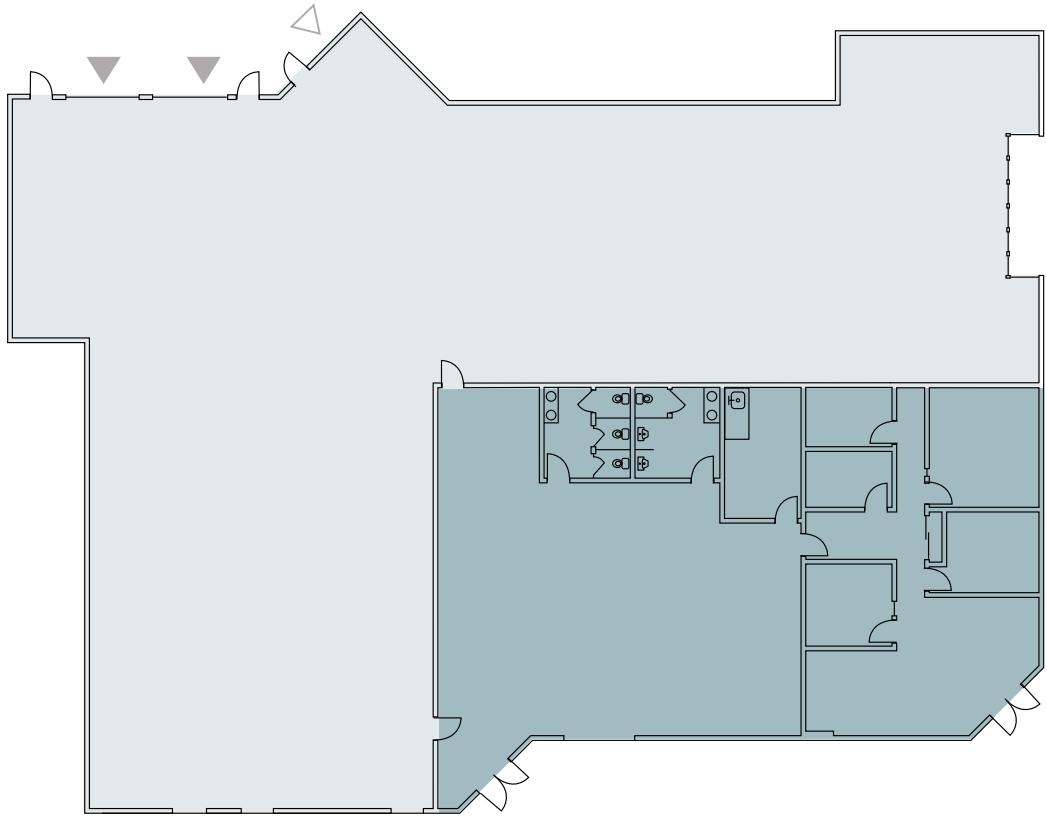
SUITE C106

13,328 SF
4,358 SF Office
8,970 SF Warehouse

Approx. 20' Clear Height

Available Now

Market Ready renovation recently completed; new carpet, paint, lighting and white boxed warehouse. Grade level and Dock High Loading



- WAREHOUSE
- OFFICE
- DOCK-HIGH
- GRADE-LEVEL



TYLER SLONE | 425.274.4281
SLONE@BRODERICKGROUP.COM

ERIC MEUSSNER | 425.274.4282
MEUSSNER@BRODERICKGROUP.COM

JEFF LIVINGSTON | 425.274.4288
LIVINGSTON@BRODERICKGROUP.COM