



BELLEVUE PLACE BUILDING
10500 NE 8th Street
Bellevue, WA

BELLEVUE PLACE BUILDING

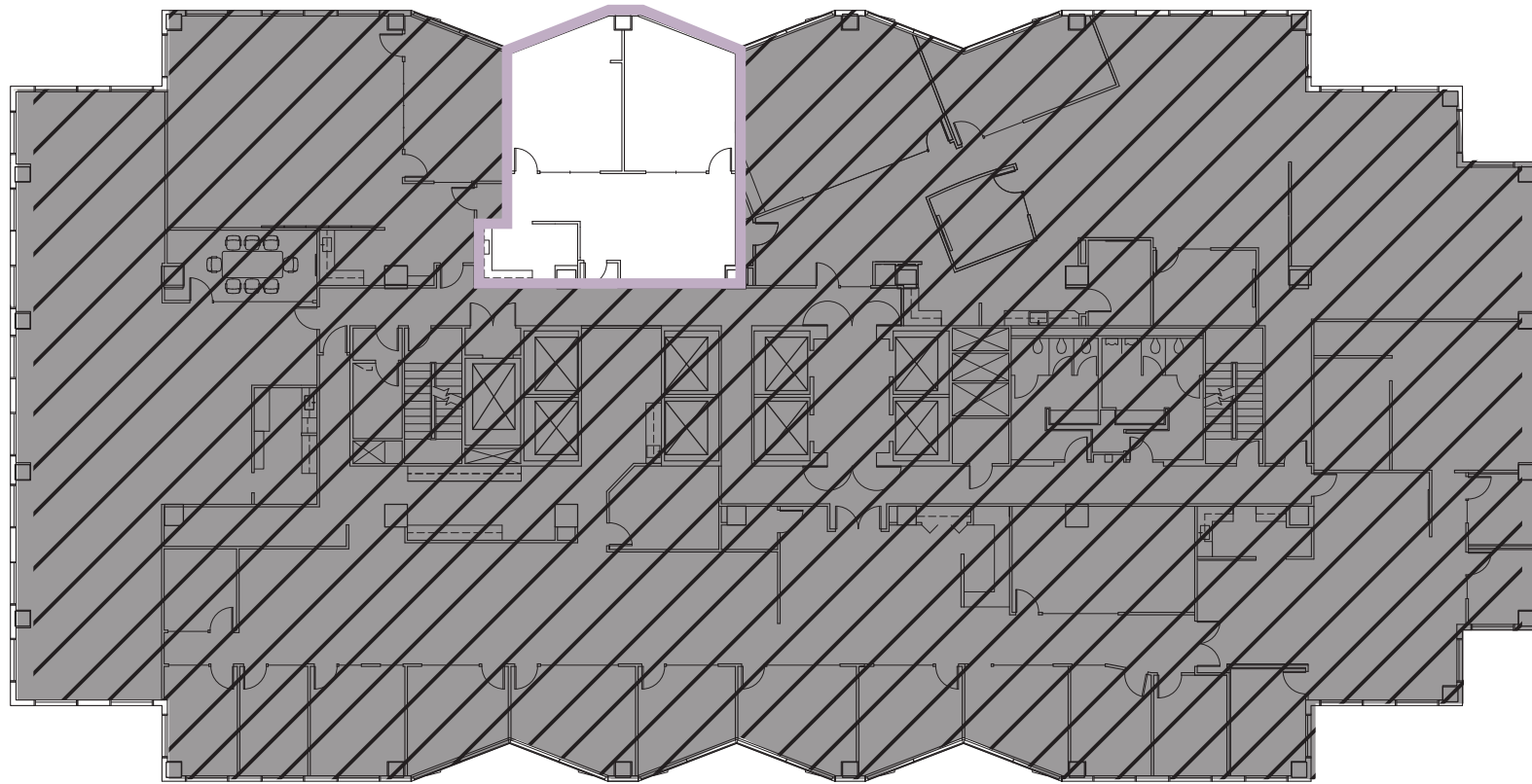
11th Floor • **Suite 1140** • 1,321 RSF



CLICK TO TAKE A
VIRTUAL TOUR

SPACE FEATURES

- Available December 1, 2025
- Two large private offices for reception or collaboration
- Open area
- Direct elevator lobby exposure
- East facing with Bellevue CBD skyline views



BRODERICK
• GROUP •

For more information or to schedule a tour, please
contact:

PAUL SWEENEY
425.646.5225
sweeney@broderickgroup.com

JIM KINERK
425.646.5221
kinerk@broderickgroup.com

CLAYTON HOLM
425.274.4287
holm@broderickgroup.com

The information contained herein has been given to us by the owner or sources which we deem reliable. We have no reason to doubt its accuracy, but we do not guarantee it. Prospective tenants should carefully verify all information contained herein.



BACK TO AVAILABLE SPACE



NORTH