



# PUGET SOUND PLAZA

1325 Fourth Avenue  
Seattle, Washington 98101



**Damon McCartney**

(206) 838-7633

mccartney@broderickgroup.com

**David Greenwood**

(206) 838-7635

greenwood@broderickgroup.com

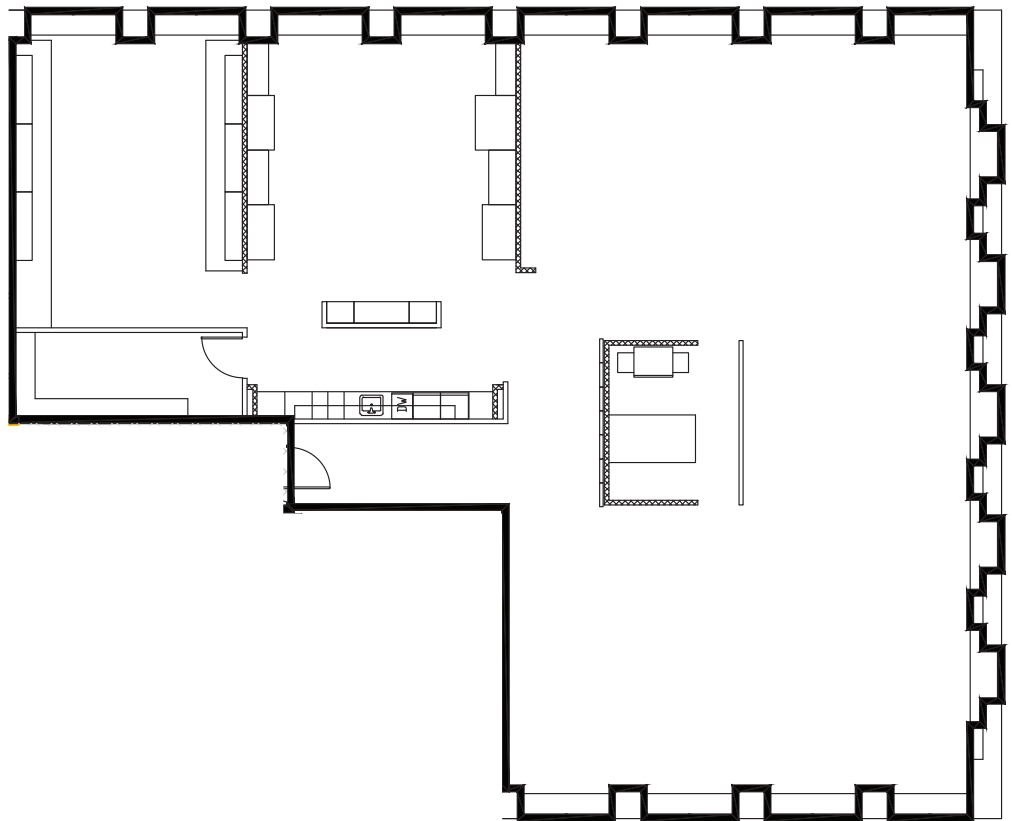


Broderick Group, Inc.  
10500 NE 8th Street, Suite 900  
Bellevue, WA 98004  
main: (206) 838-5775

broderickgroup.com

The information contained herein has been given to us  
by the owner or sources which we deem reliable.  
We have no reason to doubt its accuracy, but we do not  
guarantee it. Prospective tenants should carefully verify  
all information contained herein.

## SUITE 1940 3,993 RSF



### SPACE FEATURES

- » Available now!
- » Open work area
- » Kitchenette
- » Contiguous option with Suite 1945  
for a total of 4,933 RSF



**METROTRACT**  
SEATTLE