

CENTRAL WAY PLAZA

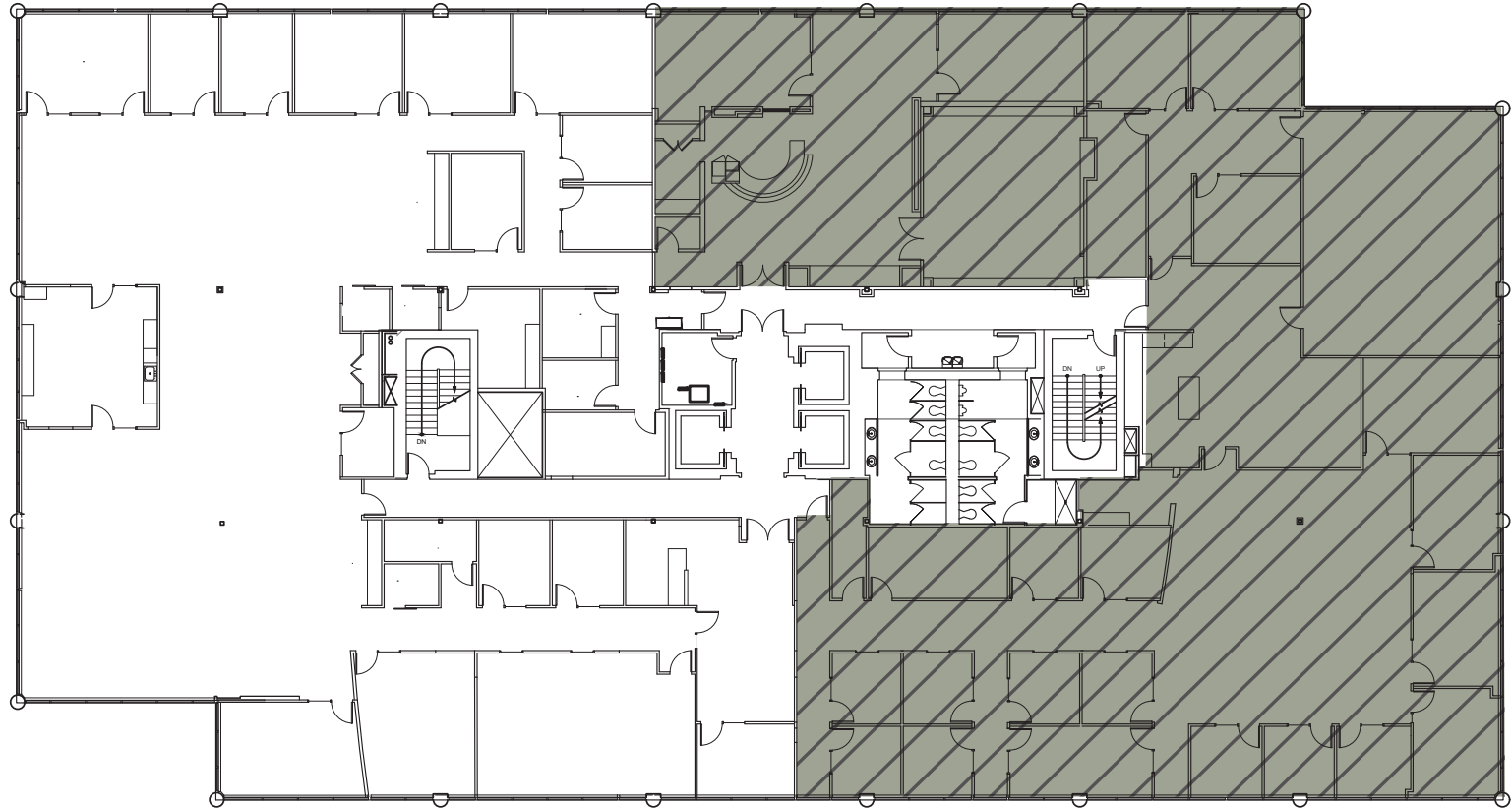
720 4TH AVENUE | KIRKLAND, WASHINGTON

720 4TH AVENUE | KIRKLAND, WASHINGTON

SUITE 400 11,153 RSF

AVAILABLE JUNE 1, 2026

- Elevator lobby exposure
- Large open area
- 5 large shared offices
- 4 private offices
- 4 phone rooms
- 4 small conference rooms
- 1 large conference room
- 1 medium conference room
- Server room
- 1 copy room
- 1 kitchen
- 1 storage room
- 1 wellness room



Commercial Real Estate Services

LEASING CONTACTS

Jim Kinerk (425) 646-5221

kinerk@broderickgroup.com

Al Hodge (425) 646-5240

hodge@broderickgroup.com

NORTHSTREAM

The information contained herein has been given to us by the owner or sources which we deem reliable. We have no reason to doubt its accuracy, but we do not guarantee it. Prospective tenants should carefully verify all information contained herein.

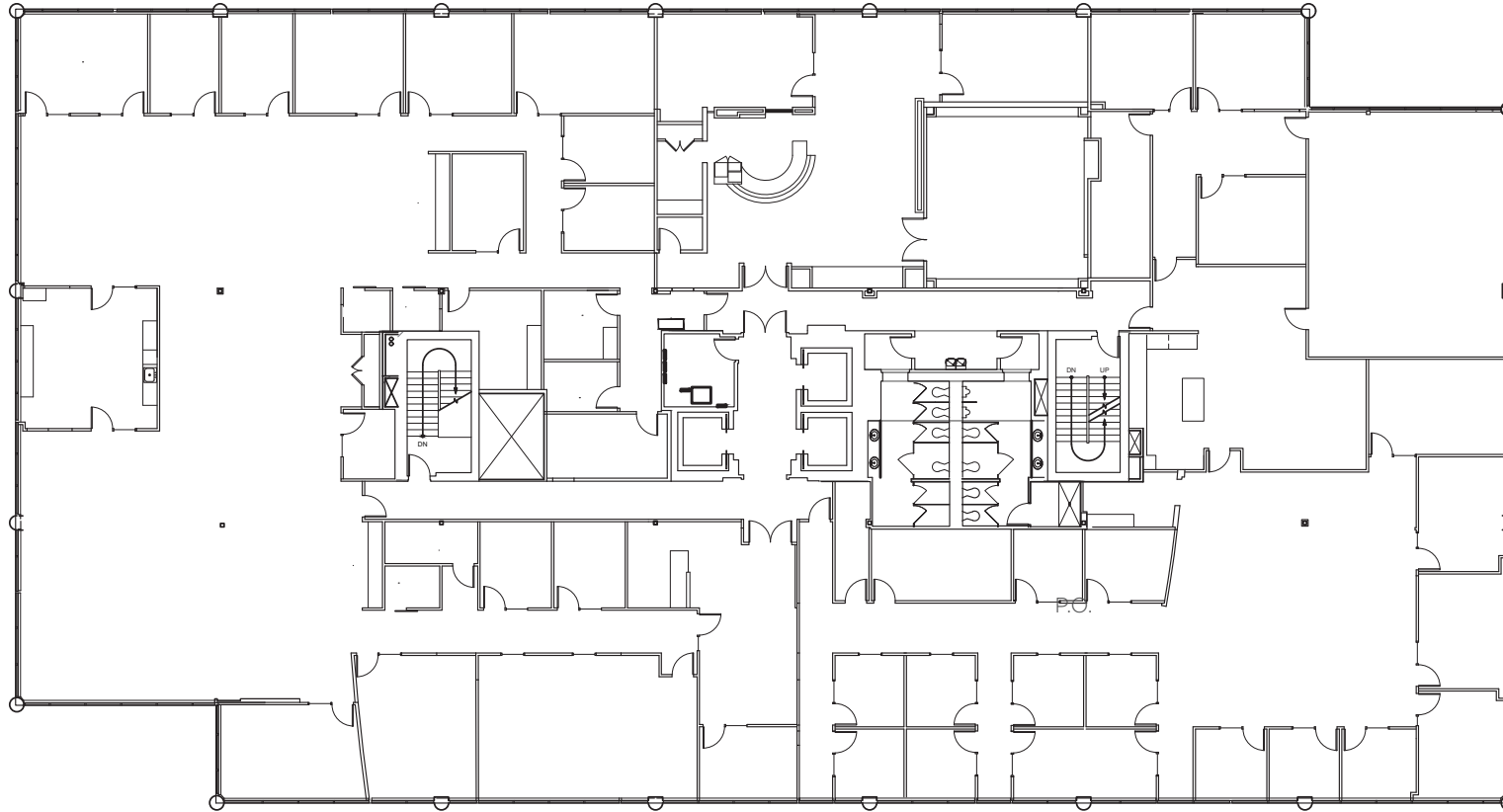
CENTRAL WAY PLAZA

720 4TH AVENUE | KIRKLAND, WASHINGTON

720 4TH AVENUE | KIRKLAND, WASHINGTON



CLICK TO TAKE A
VIRTUAL TOUR



FLOOR 4
22,458 RSF

AVAILABLE JUNE 1, 2026

- Currently demised into two suites - 11,153 SF & 11,305 SF



Commercial Real Estate Services

LEASING CONTACTS

Jim Kinerk (425) 646-5221

kinerk@broderickgroup.com

Al Hodge (425) 646-5240

hodge@broderickgroup.com

NORTHSTREAM

The information contained herein has been given to us by the owner or sources which we deem reliable. We have no reason to doubt its accuracy, but we do not guarantee it. Prospective tenants should carefully verify all information contained herein.