

Madrona Plaza

1421 34th Avenue, Seattle, WA 98122



Office space in the heart of Madrona, located just east of Capitol Hill, between I-90 and SR-520. Peacefully situated next to the Ethan Stowell restaurant Red Cow and across from the Hi-Spot Café. Surrounded by the other Madona shops, restaurants and parks, Madrona Plaza offers a variety of activities to enjoy during the day or after work.

Full Service Leases Include:

- Great location
- Reception area
- Meeting room
- Kitchenette
- Internet / WiFi
- Reserved covered parking (add'l. \$175)



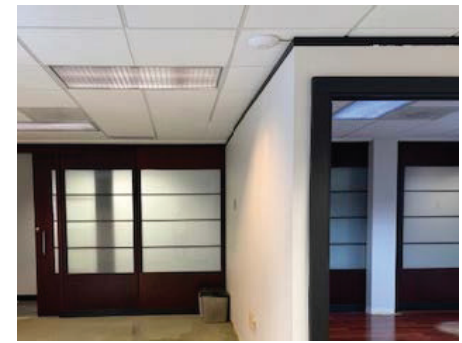
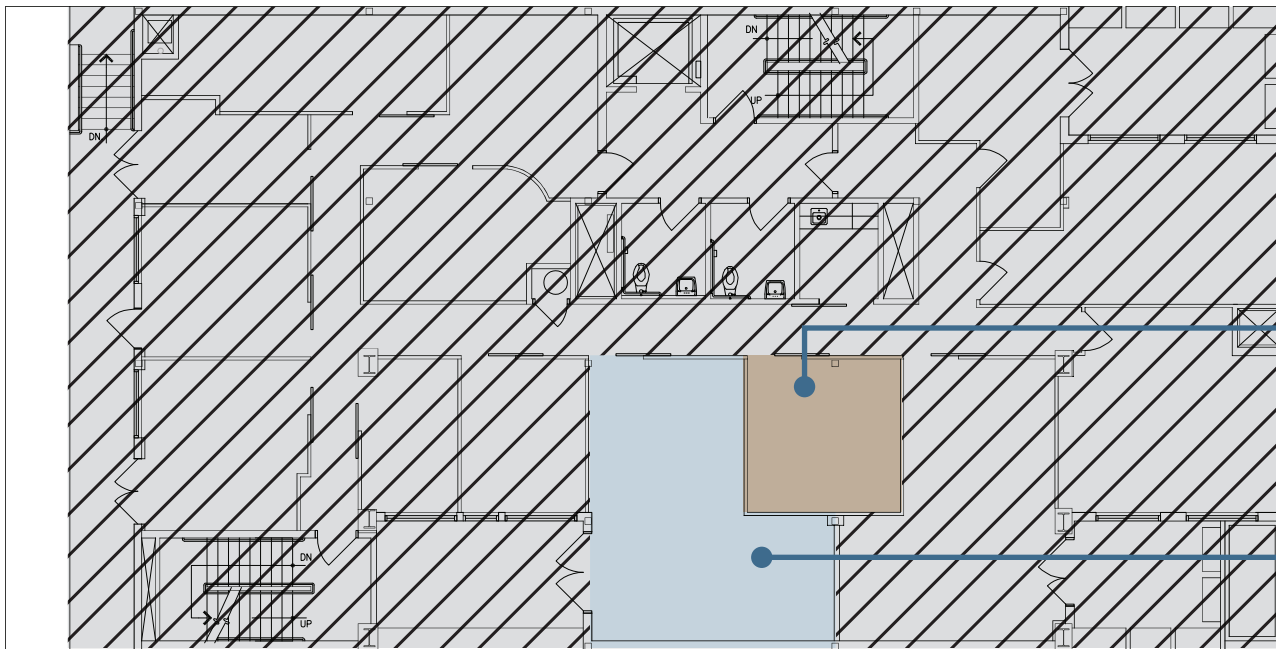
JENNY ARVISO | 206.659.2151 | jenny@incityinc.com
COURTNEY BUCK | 206.499.1794 | courtney@incityinc.com

The information contained herein has been given to us by the owner or sources that we deem reliable. We have no reason to doubt its accuracy, but we do not guarantee it. Prospective tenants should carefully verify all information contained herein.

Madrona Plaza

1421 34th Avenue, Seattle, WA 98122

FLOOR 2

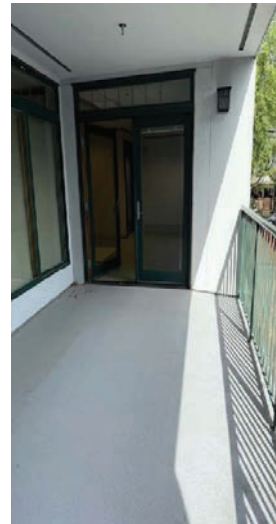


Suite 210

- 229 RSF
- \$900/mth, Gross
- Available now

Suite 209

- 525 RSF
- \$2,250/mth, Gross
- Available now



JENNY ARVISO | 206.659.2151 | jenny@incityinc.com
COURTNEY BUCK | 206.499.1794 | courtney@incityinc.com

The information contained herein has been given to us by the owner or sources that we deem reliable. We have no reason to doubt its accuracy, but we do not guarantee it. Prospective tenants should carefully verify all information contained herein.