

17,440 RSF OFFICE AND ASSEMBLY SPACE

ARLINGTON ADVANCED MANUFACTURING PARK



AL HODGE

(425) 646-5240 | hodge@broderickgroup.com

RAWLEY HOLMBERG

(425) 274-4284 | holmberg@broderickgroup.com

BRODERICK
• GROUP •



PROPERTY DETAILS

Arlington Advanced Manufacturing Park is an industrial development built in 1978 consisting of about 463,479 RSF spread amongst 17 buildings. The primary uses of the park are light manufacturing and assembly.

- » Centrally located between Hwy 9 and I-5
- » 172nd Improvements underway
- » Close proximity to Arlington Municipal Airport
- » Tech and light manufacturing capabilities
- » Internet providers include Comcast and Frontier

AVAILABLE SPACE

Building 9 <i>17825-B 59th Ave NE</i>	17,440 SF
Rates	\$1.10/SF
Available	6/1/2025
Clear Height	10'
Parking	<ul style="list-style-type: none"> • 33 parking stalls • Additional parking available
Notes	<ul style="list-style-type: none"> • Fully conditioned • Recently Renovated • Heavy power • Excellent visibility from 59th Ave. NE

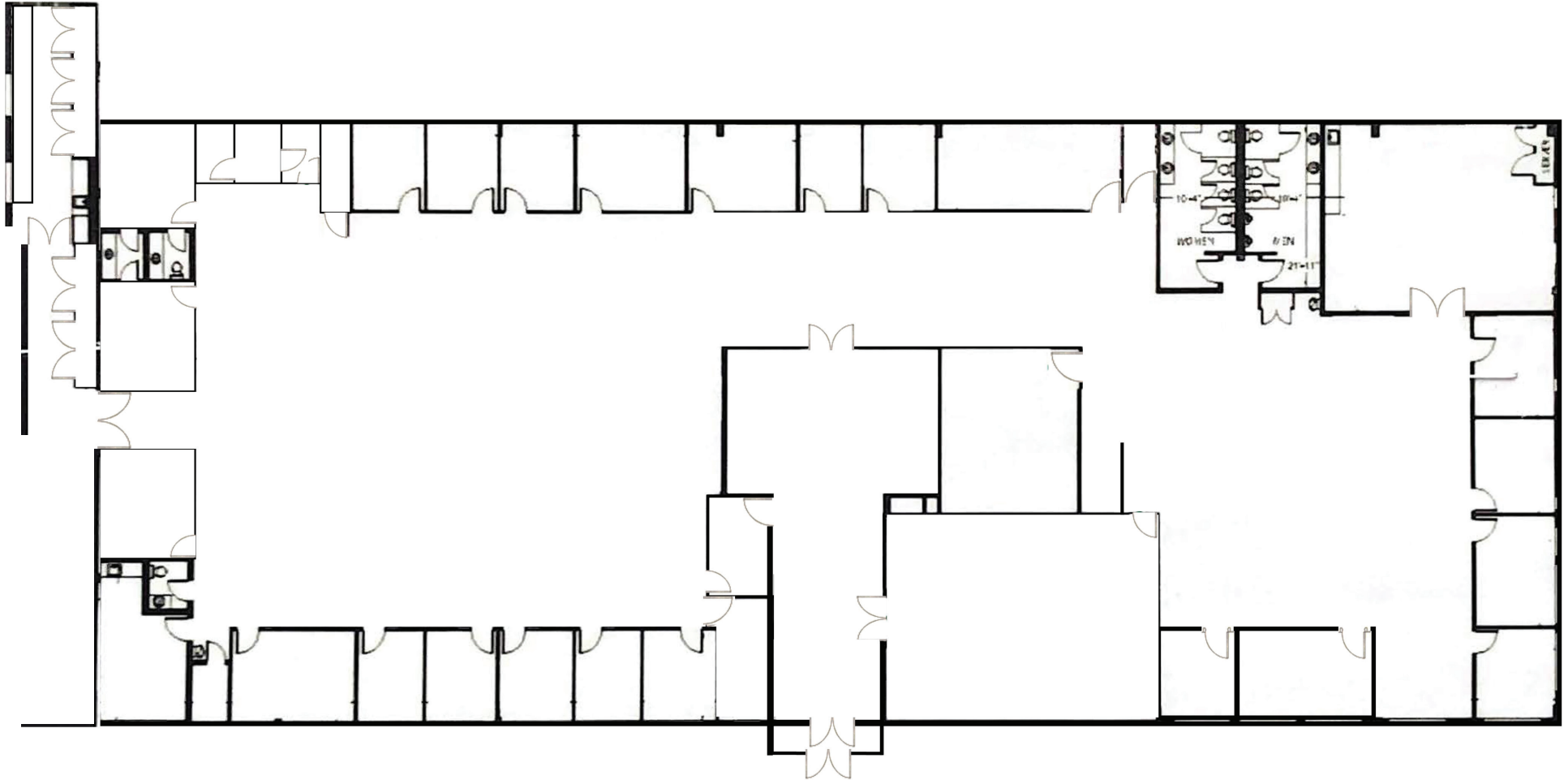
BUILDING 9

ARLINGTON ADVANCED MANUFACTURING PARK

17825-B 59th Ave. NE, Arlington, WA

17,440 RSF

- Fully conditioned office space
- Recently renovated



AL HODGE

(425) 646-5240 | hodge@broderickgroup.com

RAWLEY HOLMBERG

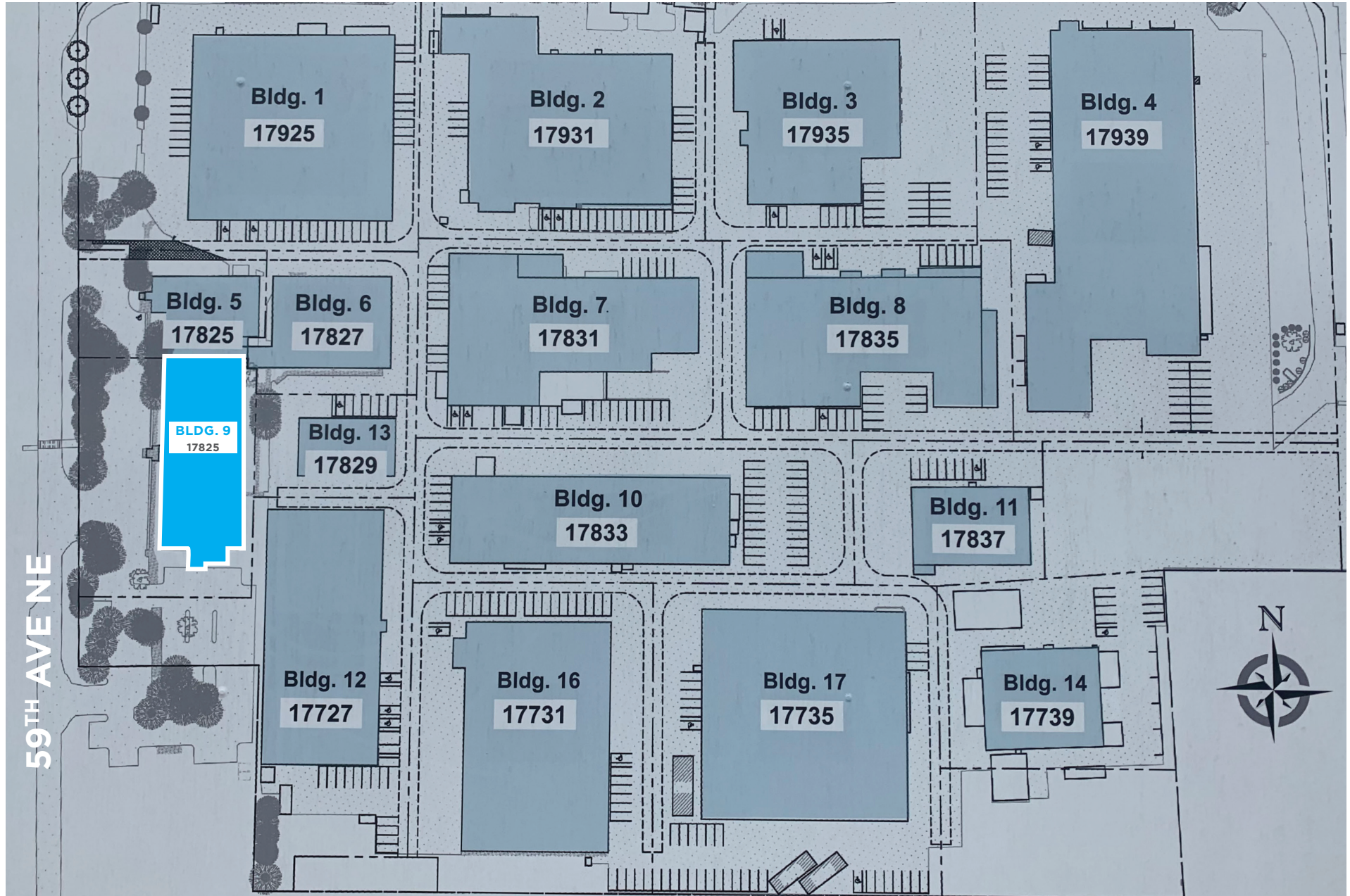
(425) 274-4284 | holmberg@broderickgroup.com

BRODERICK
• GROUP •

SITE PLAN

ARLINGTON ADVANCED MANUFACTURING PARK

17825-B 59th Ave. NE, Arlington, WA



AL HODGE

(425) 646-5240 | hodge@broderickgroup.com

RAWLEY HOLMBERG

(425) 274-4284 | holmberg@broderickgroup.com

BRODERICK
• GROUP •

AMENITIES MAP

ARLINGTON ADVANCED MANUFACTURING PARK

17825-B 59th Ave. NE, Arlington, WA



AL HODGE

(425) 646-5240 | hodge@broderickgroup.com

RAWLEY HOLMBERG

(425) 274-4284 | holmberg@broderickgroup.com

BRODERICK
• GROUP •