

# RIVERFRONT BUSINESS PARK

16110-16140 WOODINVILLE REDMOND RD NE, WOODINVILLE, WA

CLASS A LIGHT  
INDUSTRIAL BUILDINGS

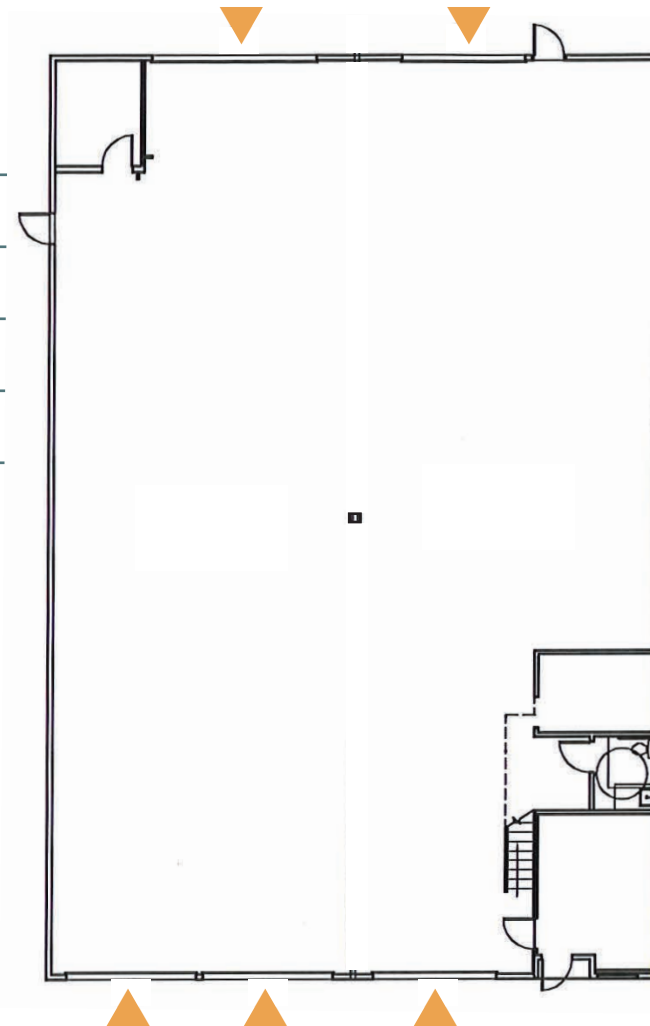
## BUILDING 16140 - SUITE 4001 & 4002

AVAILABLE IMMEDIATELY

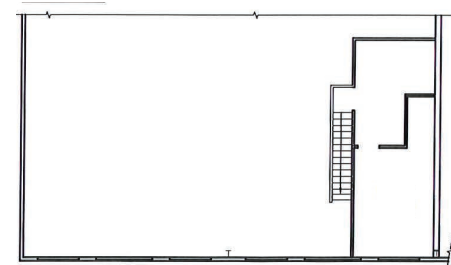
TOTAL SF:	5,828 RSF
OFFICE SF:	756 RSF
WAREHOUSE SF:	5,072 RSF
CLEAR HEIGHT:	20'
LOADING:	FIVE GRADE LEVEL DOORS

The information contained herein has been given to us by the owner or sources that we deem reliable. We have no reason to doubt its accuracy, but we do not guarantee it. Prospective tenants should carefully verify all information contained herein.

▲ GRADE-LEVEL DOOR



MEZZANINE



↑ BACK TO AVAILABLE SPACE

**BRODERICK**  
• GROUP •

**CONNOR GILCHRIST**  
425.274.4286  
[gilchrist@broderickgroup.com](mailto:gilchrist@broderickgroup.com)

**RAWLEY HOLMBERG**  
425.274.4284  
[holmberg@broderickgroup.com](mailto:holmberg@broderickgroup.com)