



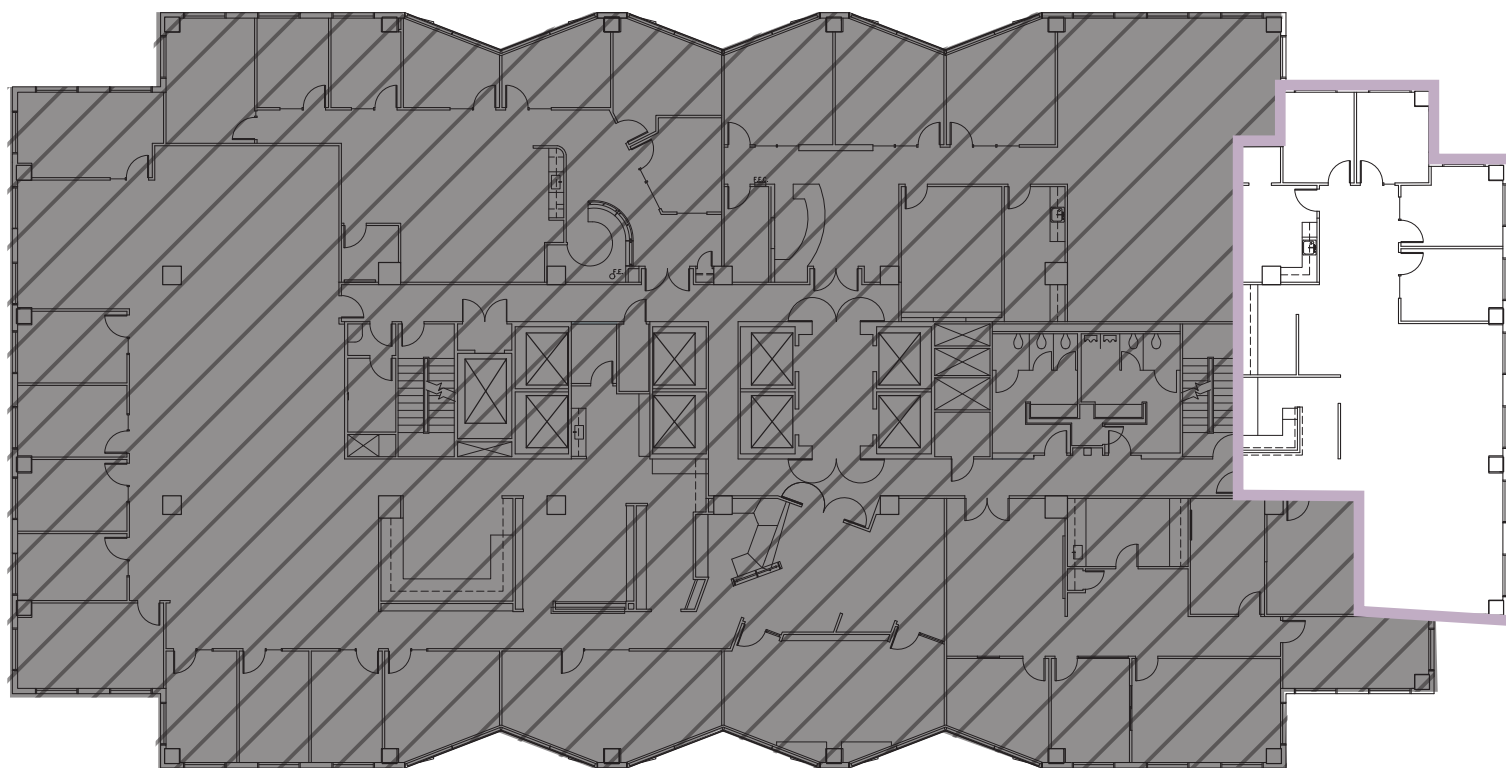
BELLEVUE PLACE BUILDING  
10500 NE 8<sup>th</sup> Street  
Bellevue, WA

## BELLEVUE PLACE BUILDING

8<sup>th</sup> Floor • **Suite 830** • 2,930 RSF

### SPACE FEATURES

- Available November 1, 2025
- Eight private offices
- Two conference rooms
- Open workstation area
- Views of the South, West and East
- Kitchenette
- Reception entry
- **Ability to combine Suites 825 & 830 for 5,148 RSF**



**BRODERICK**  
• GROUP •

For more information or to schedule a tour, please  
contact:

PAUL SWEENEY  
425.646.5225  
[sweeney@broderickgroup.com](mailto:sweeney@broderickgroup.com)

JIM KINERK  
425.646.5221  
[kinerk@broderickgroup.com](mailto:kinerk@broderickgroup.com)

CLAYTON HOLM  
425.274.4287  
[holm@broderickgroup.com](mailto:holm@broderickgroup.com)

The information contained herein has been given to us by the owner or sources which we deem reliable. We have no reason to doubt its accuracy, but we do not guarantee it. Prospective tenants should carefully verify all information contained herein.



BACK TO AVAILABLE SPACE



NORTH



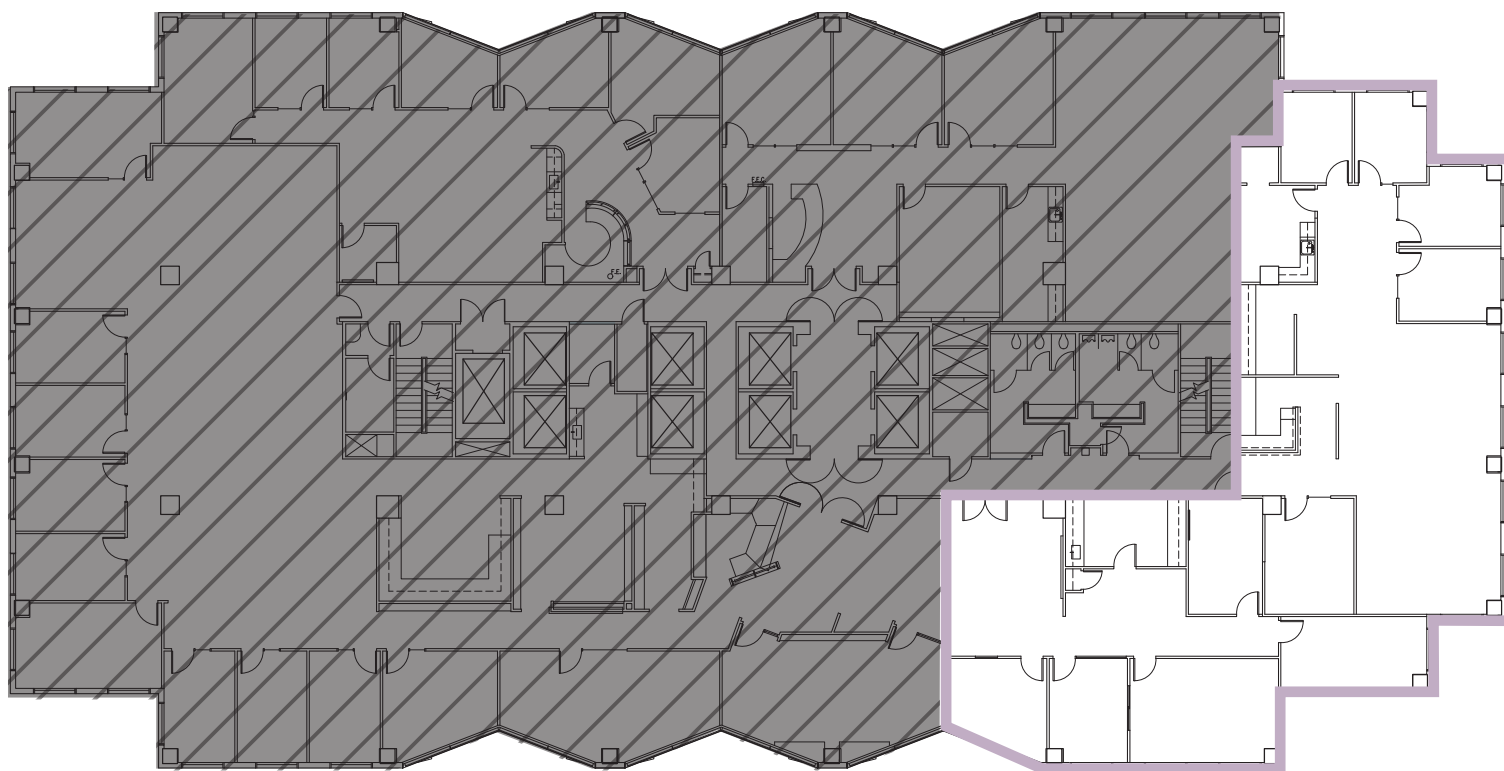
BELLEVUE PLACE BUILDING  
10500 NE 8<sup>th</sup> Street  
Bellevue, WA

## BELLEVUE PLACE BUILDING

8<sup>th</sup> Floor • **Suite 825 & 830** • 5,148 RSF

### SPACE FEATURES

- Available November 1, 2025
- Eight private offices
- Four conference rooms
- Open workstation area
- Views of the South, West and East
- Kitchenette
- Reception entry
- **Ability to combine Suites 825 & 830 for 5,148 RSF**



**BRODERICK**  
• GROUP •

For more information or to schedule a tour, please contact:

PAUL SWEENEY

425.646.5225

[sweeney@broderickgroup.com](mailto:sweeney@broderickgroup.com)

JIM KINERK

425.646.5221

[kinerk@broderickgroup.com](mailto:kinerk@broderickgroup.com)

CLAYTON HOLM

425.274.4287

[holm@broderickgroup.com](mailto:holm@broderickgroup.com)

The information contained herein has been given to us by the owner or sources which we deem reliable. We have no reason to doubt its accuracy, but we do not guarantee it. Prospective tenants should carefully verify all information contained herein.



BACK TO AVAILABLE SPACE



NORTH