



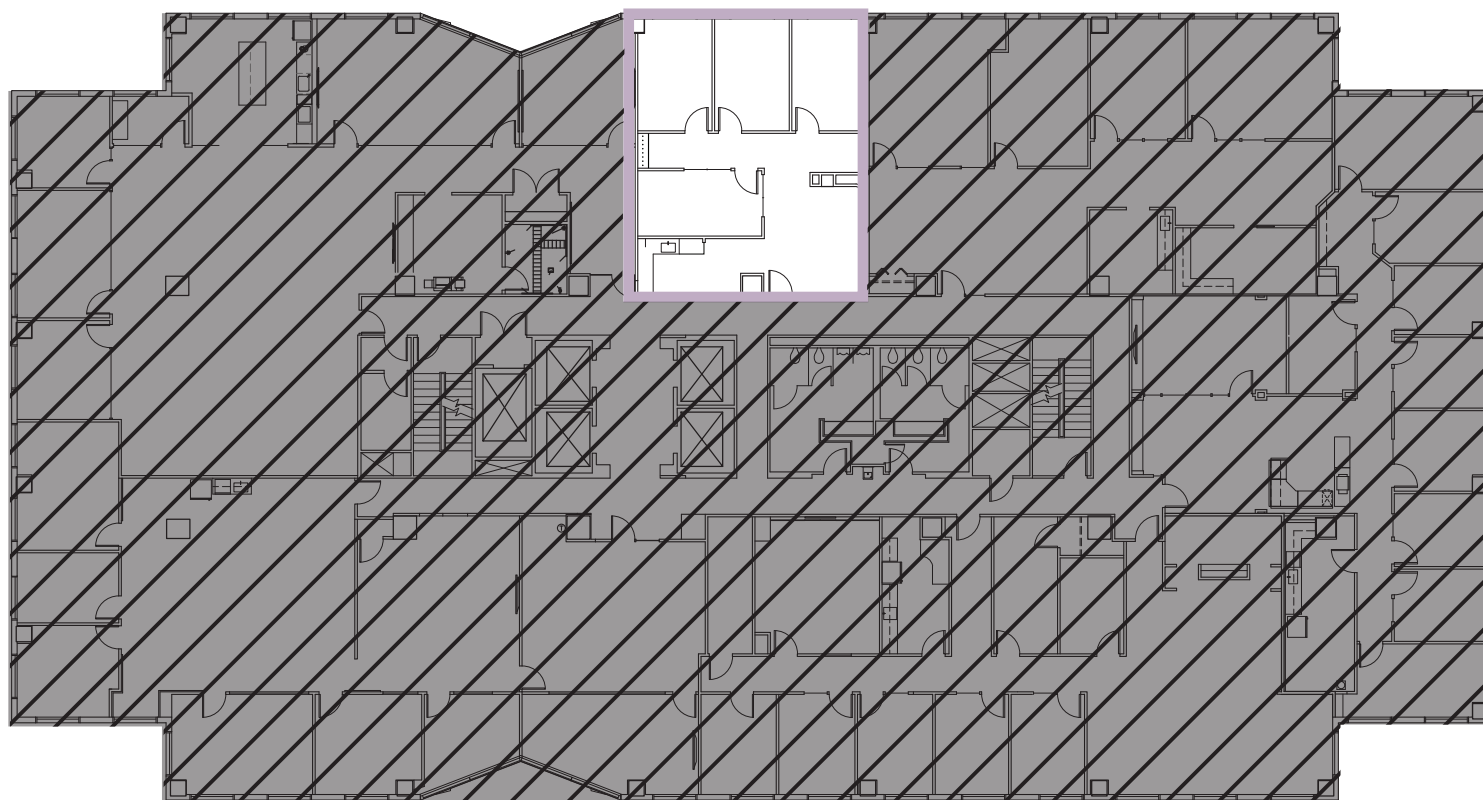
BELLEVUE PLACE BUILDING  
10500 NE 8<sup>th</sup> Street  
Bellevue, WA

## BELLEVUE PLACE BUILDING

19<sup>th</sup> Floor • **Suite 1930** • 1,335 RSF

### SPACE FEATURES

- Available Now
- Three private offices
- Conference room
- Reception entry
- Kitchenette
- Elevator lobby exposure
- East facing with Bellevue CBD skyline views



**BRODERICK**  
• GROUP •

For more information or to schedule a tour, please  
contact:

PAUL SWEENEY

425.646.5225

[sweeney@broderickgroup.com](mailto:sweeney@broderickgroup.com)

JIM KINERK

425.646.5221

[kinerk@broderickgroup.com](mailto:kinerk@broderickgroup.com)

CLAYTON HOLM

425.274.4287

[holm@broderickgroup.com](mailto:holm@broderickgroup.com)

The information contained herein has been given to us by the owner or sources which we deem reliable. We have no reason to doubt its accuracy, but we do not guarantee it. Prospective tenants should carefully verify all information contained herein.



BACK TO AVAILABLE SPACE



NORTH