



# CENTURY SQUARE

1501 4TH AVE | SEATTLE, WA

# FLOOR 15

22,285 RSF

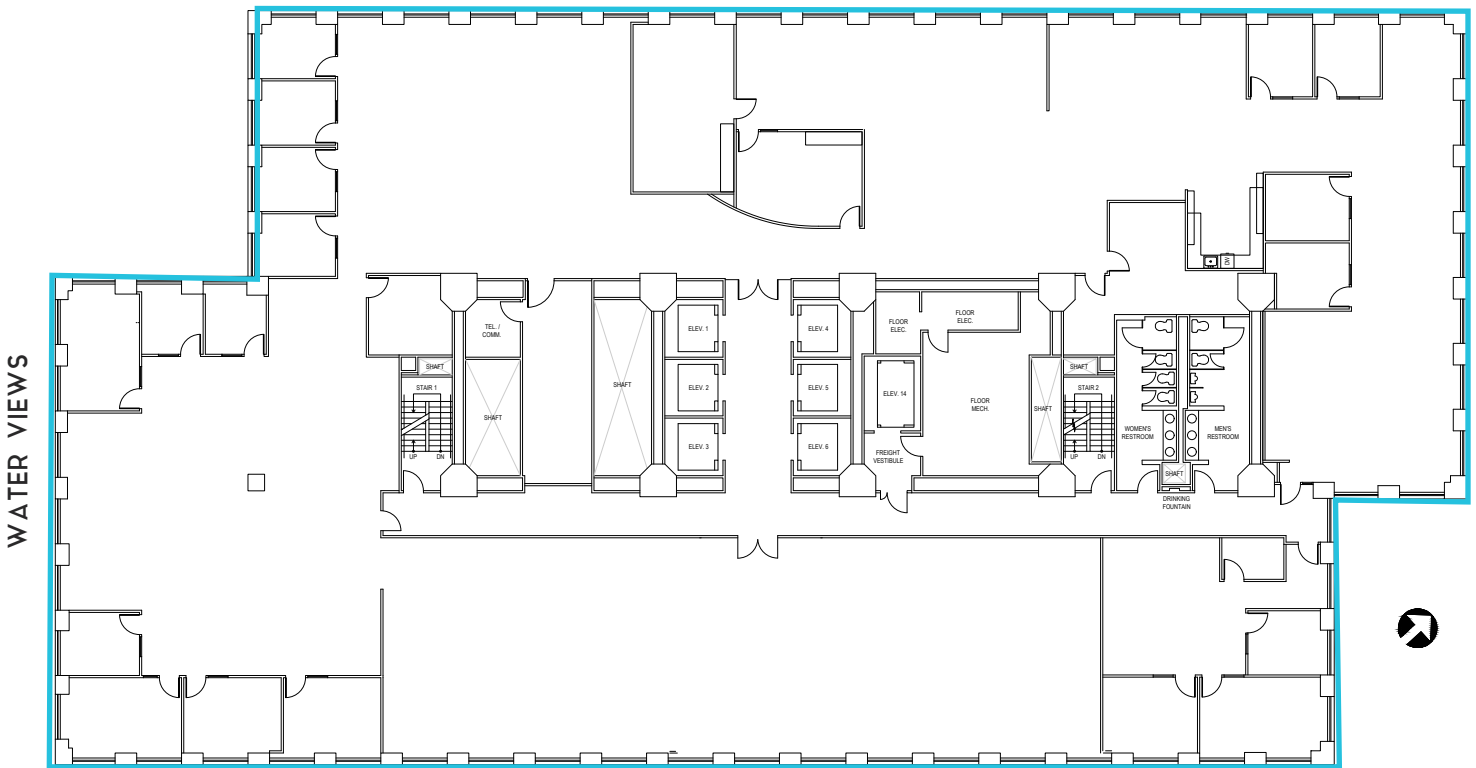


## SUITE 1500

22,285 RSF | AVAILABLE ON 9/1/2026, WITH 60 DAYS' NOTICE

- Full floor
- Second generation tech space with water views

WATER VIEWS



RETURN TO  
AVAILABLE  
SPACE



**DAVID GREENWOOD** | 206.838.7635  
greenwood@broderickgroup.com

**LARRY ALMELEH** | 206.910.0859  
almeleh@broderickgroup.com

**DAMON MCCARTNEY** | 206.838.7633  
mccartney@broderickgroup.com

**LAUREN HALLGRIMSON** | 206.948.4440  
hallgrimson@broderickgroup.com