

BELLEVUE  
WASHINGTON



FOR SALE

**11512 NE 20TH ST**

BRODERICK  
• GROUP •



FOR SALE

# 11512 NE 20TH ST



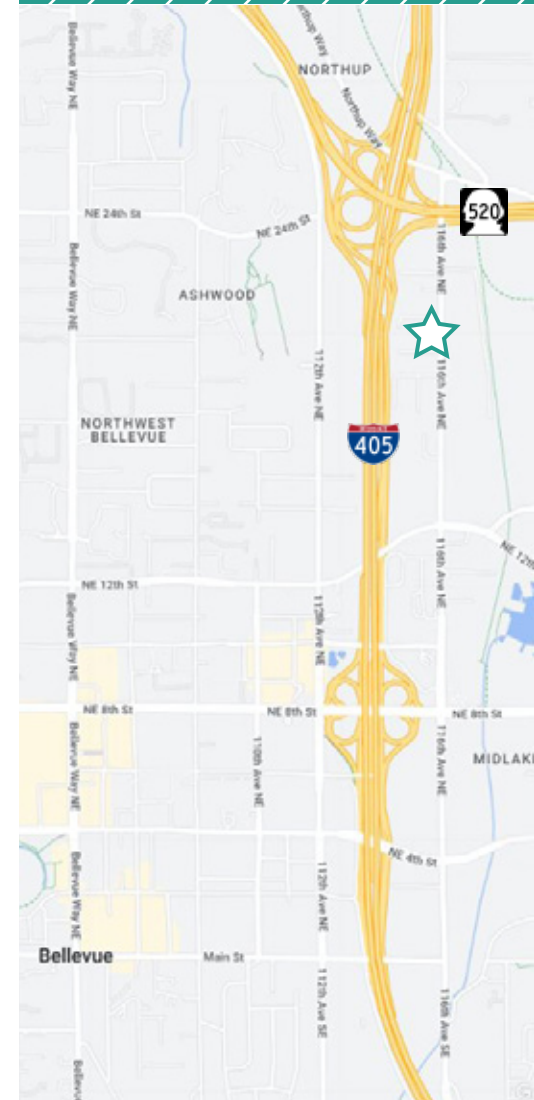
## BUILDING FACTS

- **SALE PRICE:** \$1,680,000
- **BUILDING SF:** 1,756 SF
- **LAND SF:** 10,000 SF
- **ZONING:** BR-MO
- **PARKING:** 10 SURFACE STALLS WITH THE ABILITY TO STACK ADDITIONAL PARKING

## BUILDING HIGHLIGHTS

- EXCELLENT CONDITION, MOVE-IN READY WITH EFFICIENT FLOORPLAN
- QUALITY IMPROVEMENTS - CURRENT OCCUPANT IS A CONTRACTOR
- CONVENIENT ACCESS TO I-405 AND SR-520, RIGHT OUTSIDE OF BELLEVUE CBD
- ABILITY TO PURCHASE CONTIGUOUS SITE/ BUILDING 11520 NE 20TH ST (\$2,650,000)
- YARD SPACE WITH SHED, IDEAL FOR PLAYGROUND OR OUTSIDE USE

BELLEVUE  
WASHINGTON

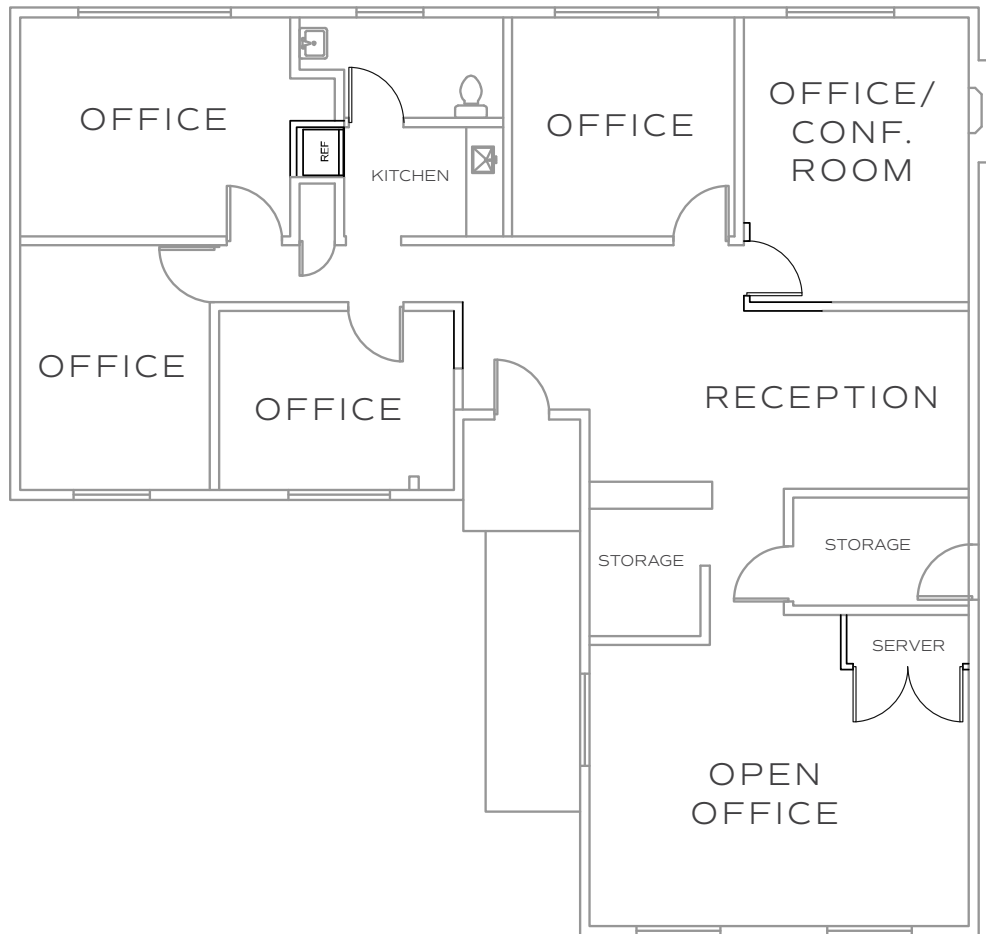


The information contained herein has been given to us by the owner or sources that we deem reliable. We have no reason to doubt its accuracy, but we do not guarantee it. Prospective tenants should carefully verify all information contained herein.

FOR SALE

11512 NE 20TH ST

BELLEVUE  
WASHINGTON



COLIN TANIGAWA | 425.274.4283 | [tanigawa@broderickgroup.com](mailto:tanigawa@broderickgroup.com)

PAUL JERUE | 425.646.5223 | [jerue@broderickgroup.com](mailto:jerue@broderickgroup.com)