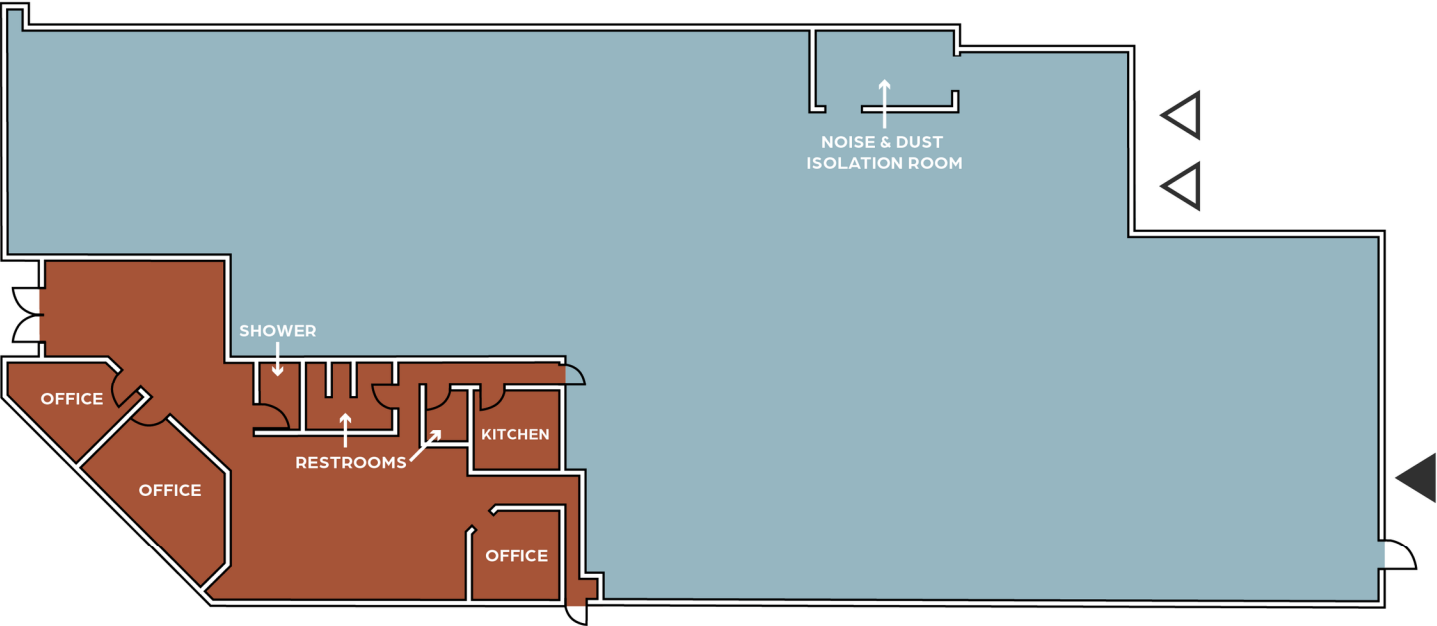




BUILDING A, SUITE 100



- KEY**
-  Dock high door
 -  Grade level door



SPACE FEATURES

Date Available:	4/1/2025
Total SF:	14,770 SF
Office SF:	2,795 SF
Clear Height:	24'

Loading:	2 DH, 1 GL
Power:	250 amps, 277/480V, 3-phase
Parking:	Ample parking