

FOR LEASE

Owned and Operated by  **LINK**

HARBOUR REACH BUSINESS PARK

4620 Campus Place, Mukilteo, WA

Bldg. A, Suite 100: 14,770 SF
Bldg. B, Suite 200: 20,000 SF



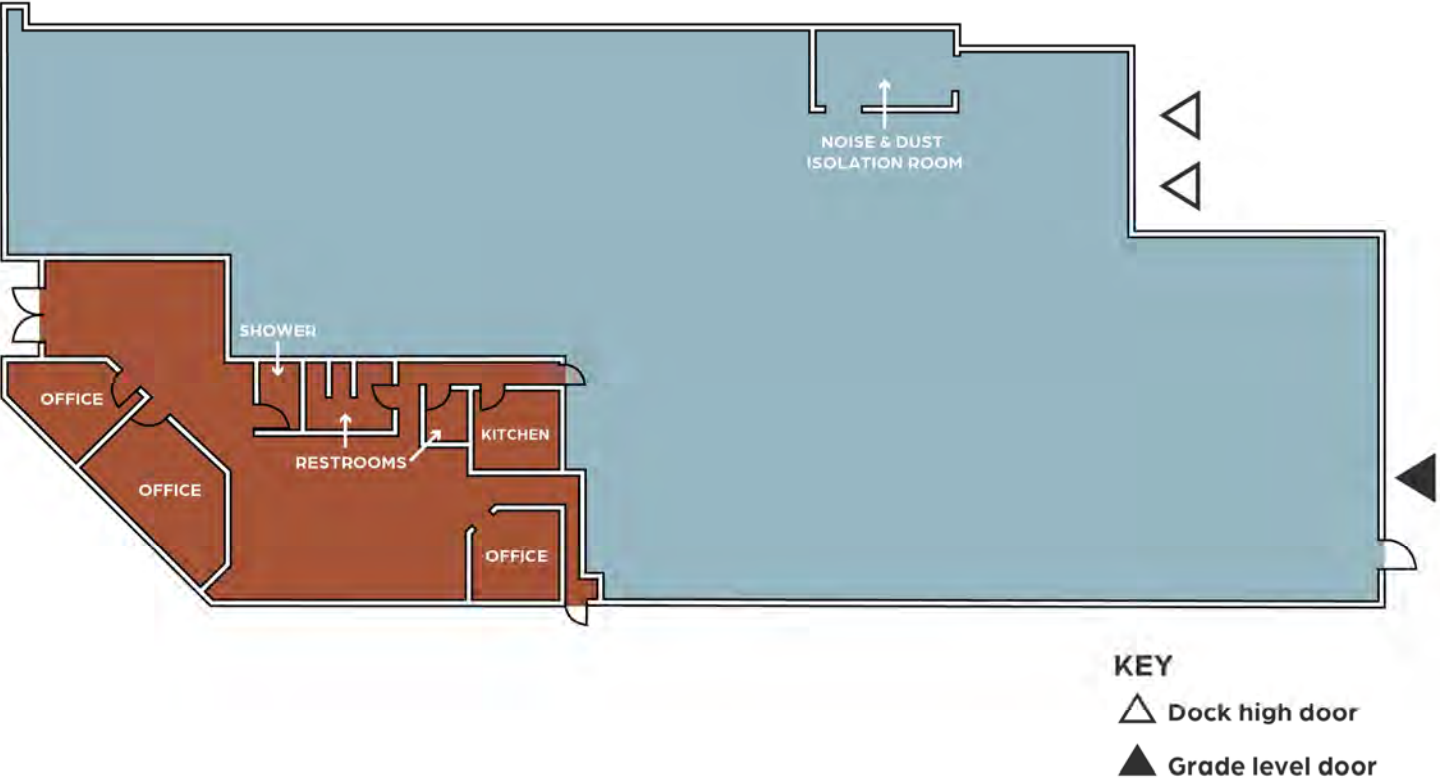
LEASING INFO & CONTACT

Connor Gilchrist (425) 274-4286 / gilchrist@broderickgroup.com
Rawley Holmberg (425) 274-4284 / holmberg@broderickgroup.com

BRODERICK
• GROUP •

This is not an offer or acceptance of an offer to lease space. A lease will only be offered or made in a written agreement signed by landlord. No representation or warranty of any kind is made by landlord unless set forth in a written definitive lease executed by the landlord.

BUILDING A, SUITE 100



SPACE FEATURES

Date Available:	4/1/2025
Total SF:	14,770 SF
Office SF:	2,795 SF
Clear Height:	24'

Loading:	2 DH, 1 GL
Power:	250 amps, 277/480V, 3-phase
Parking:	Ample parking



BUILDING B, SUITE 200



SCAN TO VIEW
VIRTUAL TOUR



KEY

-  Dock high door
-  Grade level door



SPACE FEATURES

Date Available:	Available Now
Total SF:	20,000 SF
Office SF:	2,186 SF
Clear Height:	24'

Loading:	4 DH, 3 GL
Power:	450 amps, 277/480V, 3-phase
Parking:	Ample parking

