

BELLEVUE, WASHINGTON

# EVERGREEN CENTER

1824 130TH AVENUE NE | BELLEVUE, WA 98005

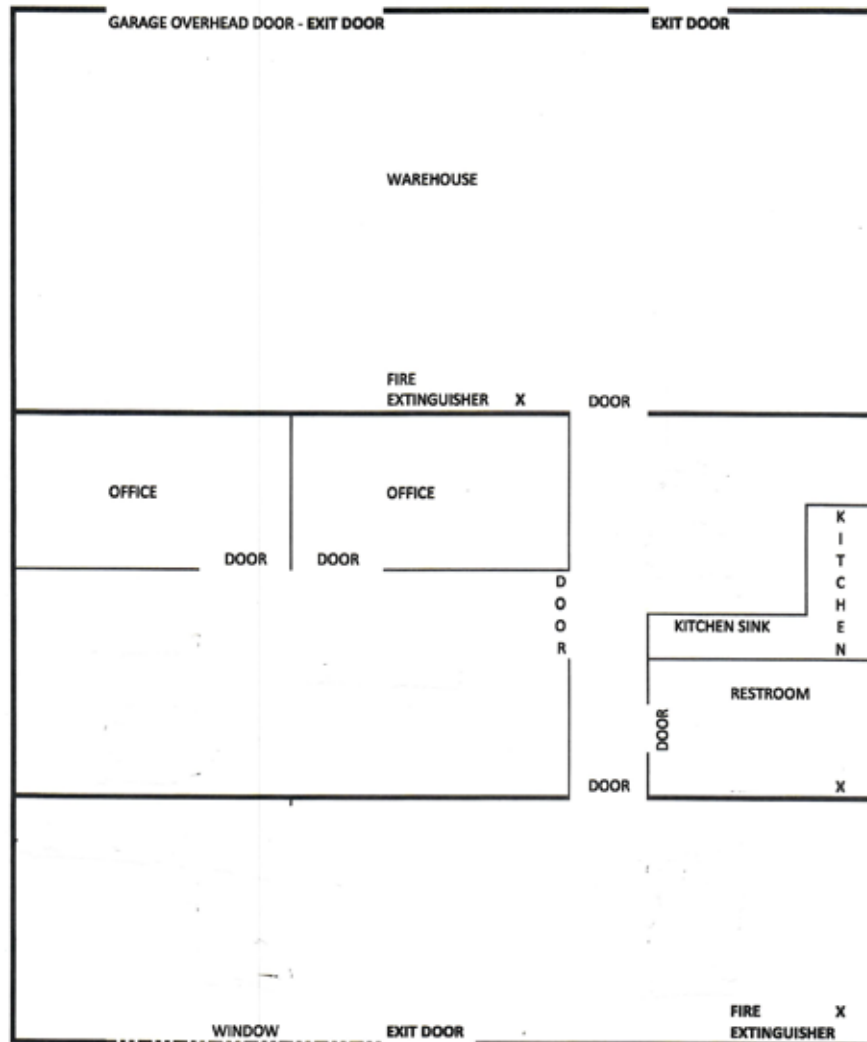
## SUITE 1854 #1

2,435 RSF

\$30.00/RSF, NNN or  
\$6,088.00, NNN per month

4/1000 Parking

Available Now



**JENNY ARVISO**  
206.659.2151  
jenny@incityinc.com

**COURTNEY BUCK**  
206.499.1794  
courtney@incityinc.com

The information contained herein has been given to us by the owner or sources that we deem reliable. We have no reason to doubt its accuracy, but we do not guarantee it. Prospective tenants should carefully verify all information contained herein.