

The Jewel @

620 KIRKLAND WAY



KIRKLAND OFFICE SPACE AVAILABLE FOR LEASE

The Jewel @ 620 KIRKLAND WAY



BUILDING FEATURES

- Major remodel recently completed for the exterior and interior of the building
- Two story office building conveniently located in Downtown Kirkland
- Parking ratio of 3.3 stalls / 1,000 SF - covered and surface parking
- Direct access to I-405 via Kirkland Way, SR-520 and Eastside neighborhoods
- Less than a block away from Kirkland Urban, with over 250,000 SF of retail options
- Three blocks from Kirkland Transit Center
- Easy walk to all of Downtown Kirkland's retail and restaurant amenities

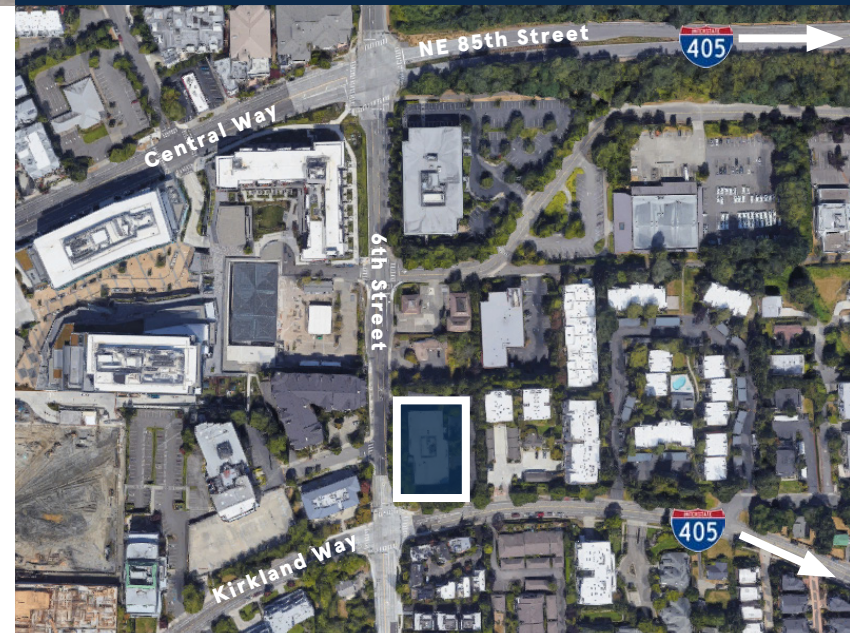
AVAILABLE SPACE

SUITE 104 - 1,027 SF

AVAILABLE NOW

CALL BROKERS FOR RATES

MARKET READY
IMPROVEMENTS UNDERWAY



The Jewel @ 620 KIRKLAND WAY

**RARE DOWNTOWN
AVAILABILITY**



- KIRKLAND
URBAN.**
- Chainline Brewing
 - Shake Shack
 - QFC w/ Starbucks
 - Tutta Bella
 - Mud Bay
 - AT&T Wireless
 - Home Street Bank
 - Bright Horizons
 - Top Golf Lounge
 - Soi - Thai Restaurant
 - Rachels Ginger Beer
 - Evergreens
 - Dough Zone
 - Cafe Ladro
 - IPic Theatre

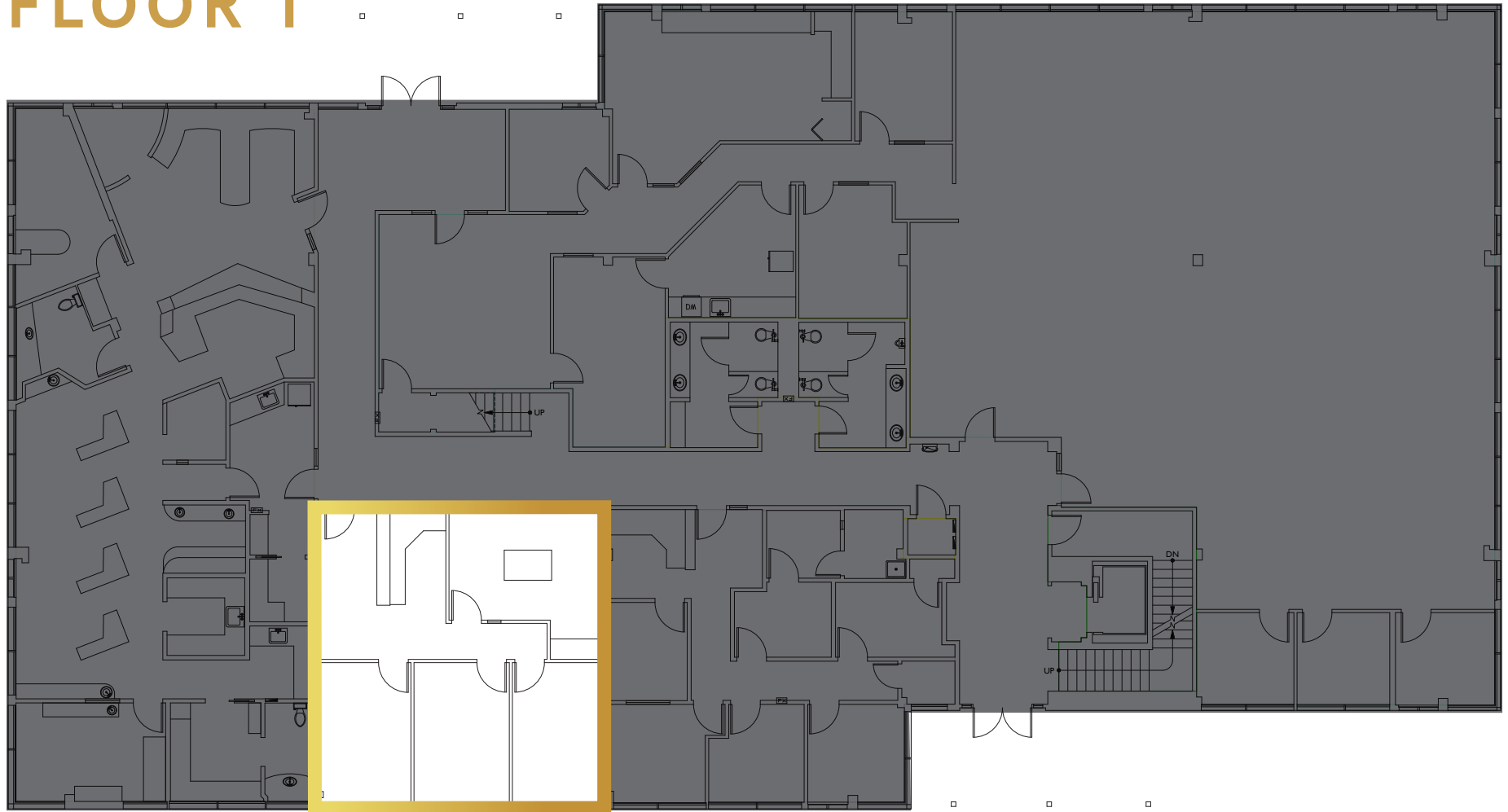
TO SR-520 &
DOWNTOWN
BELLEVUE

TO NE 70th Place

The Jewel @
620 KIRKLAND WAY

FLOOR PLAN

FLOOR 1



**SUITE
104**