

HILLCREST BUILDING

18704 Bothell Way NE | Bothell, WA

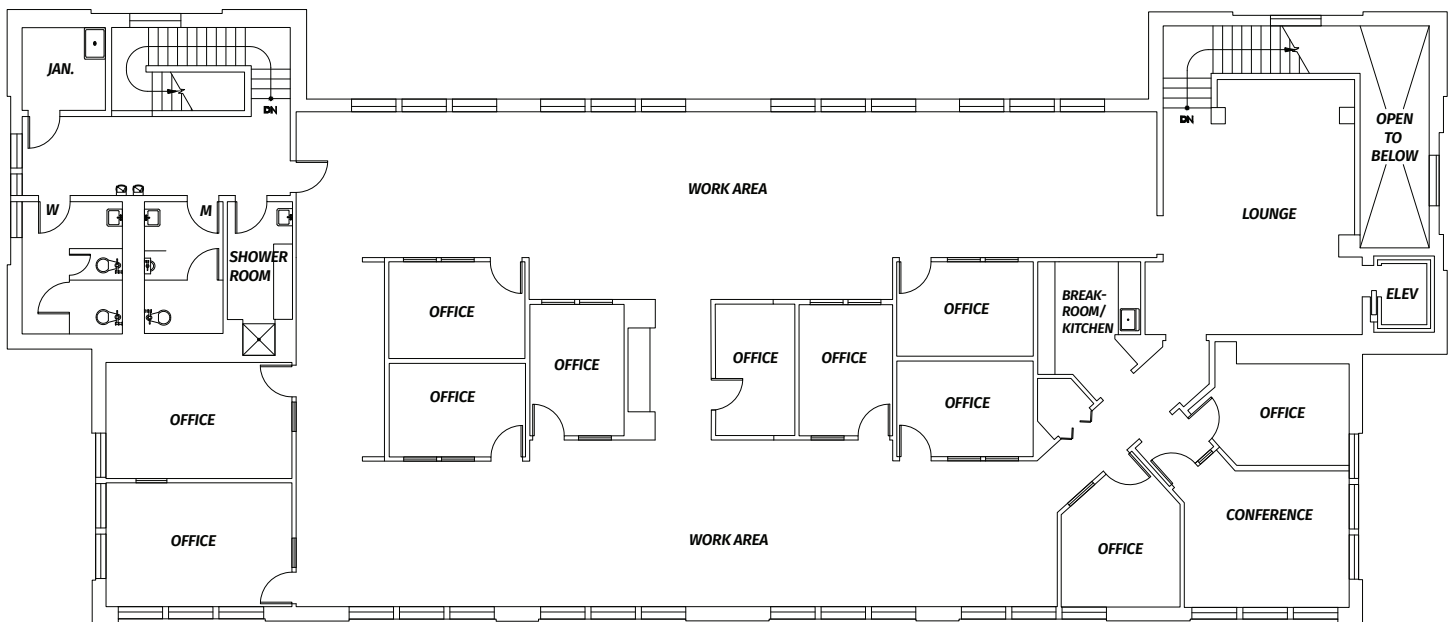
FLOOR PLAN Second Floor - 5,936 SF



2nd Floor

- 5,936 RSF

[VIEW VIRTUAL TOUR](#)



BRODERICK
GROUP

PAUL JERUE
(425) 646-5223
jerue@broderickgroup.com

TYLER SLONE
(425) 274-4281
slone@broderickgroup.com

The information contained herein has been given to us by the owner or other sources that we deem reliable. We have no reason to doubt its accuracy, but we do not guarantee it. Prospective tenants should carefully verify all information contained herein.

HILLCREST BUILDING

18704 Bothell Way NE | Bothell, WA

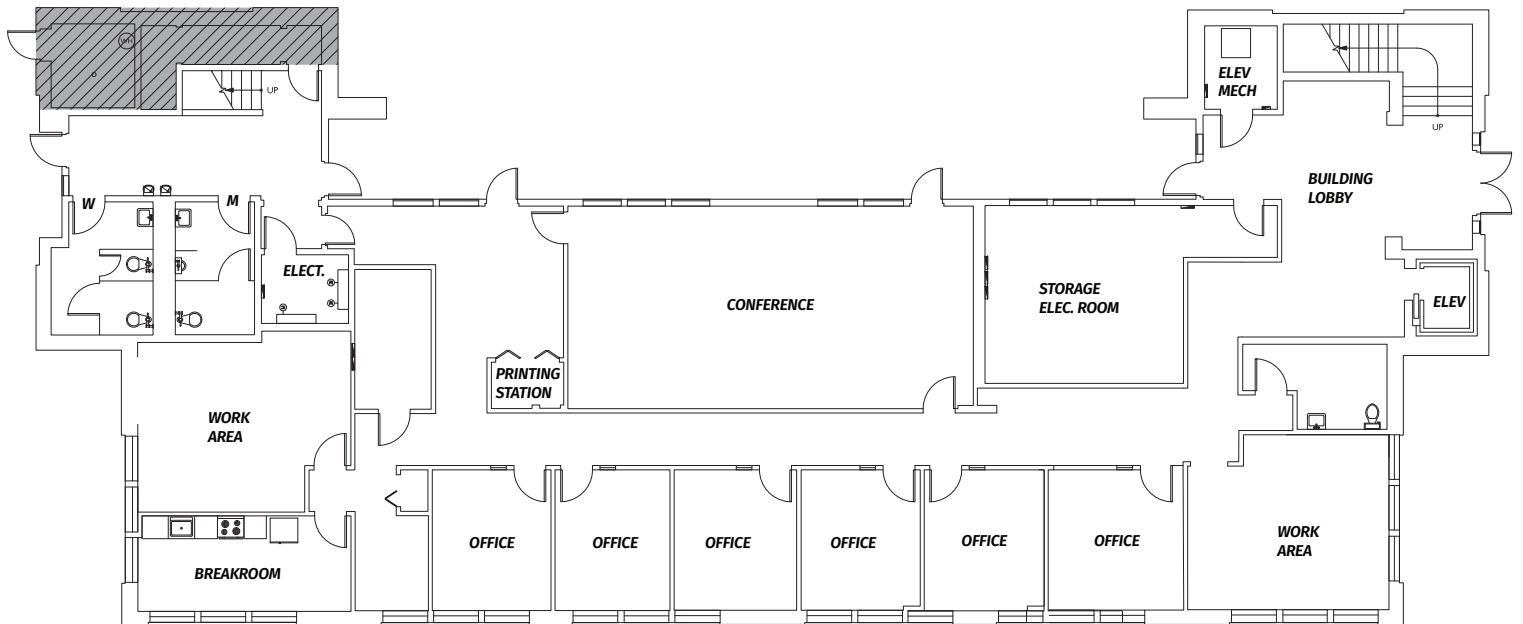
FLOOR PLAN First Floor - 5,401 SF



1st Floor

- 5,401 RSF

[VIEW VIRTUAL TOUR](#)



BRODERICK
GROUP

PAUL JERUE
(425) 646-5223
jerue@broderickgroup.com

TYLER SLONE
(425) 274-4281
slone@broderickgroup.com

The information contained herein has been given to us by the owner or other sources that we deem reliable. We have no reason to doubt its accuracy, but we do not guarantee it. Prospective tenants should carefully verify all information contained herein.