

PAINE FIELD

BUSINESS PARK

2615 WEST CASINO ROAD
EVERETT, WASHINGTON 98204

SUITE 5A

AVAILABLE 6/1/2026

TOTAL SF: 1,961 RSF

OFFICE SF: 581 RSF

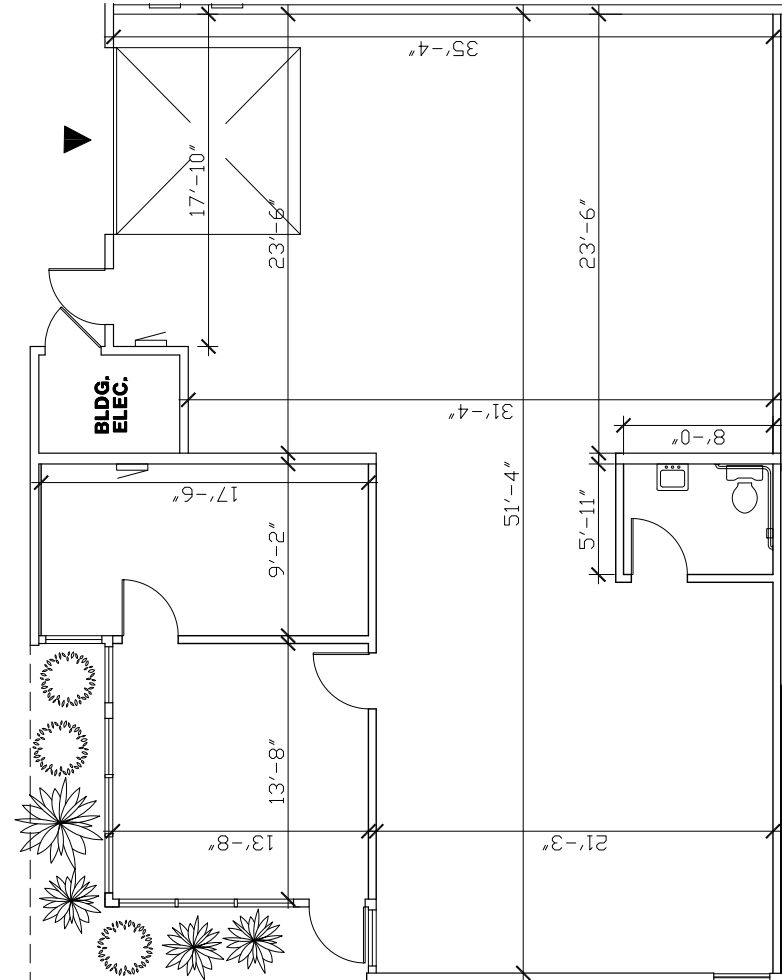
WAREHOUSE SF: 1,380 RSF

BASE RENT: \$2,745

NNN: \$726

GROSS RENT: \$3,471

The information contained herein has been given to us by the owner or sources that we deem reliable. We have no reason to doubt its accuracy, but we do not guarantee it. Prospective tenants should carefully verify all information contained herein.



↑ BACK TO AVAILABLE SPACE



CONNOR GILCHRIST
425.274.4286
gilchrist@broderickgroup.com

RAWLEY HOLMBERG
425.274.4284
holmberg@broderickgroup.com

SAMSON TORO
425.274.4289
toro@broderickgroup.com

OWNED AND MANAGED BY:

