



FINANCIAL CENTER

1215 Fourth Avenue
Seattle, Washington 98101

For further information,
please contact:

Damon McCartney

(206) 838-7633

mccartney@broderickgroup.com

David Greenwood

(206) 838-7635

greenwood@broderickgroup.com



Broderick Group, Inc.
10500 NE 8th Street, Suite 900
Bellevue, WA 98004
main: (206) 838-5775

broderickgroup.com

The information contained herein has been given to us
by the owner or sources which we deem reliable.
We have no reason to doubt its accuracy, but we do not
guarantee it. Prospective tenants should carefully verify
all information contained herein.

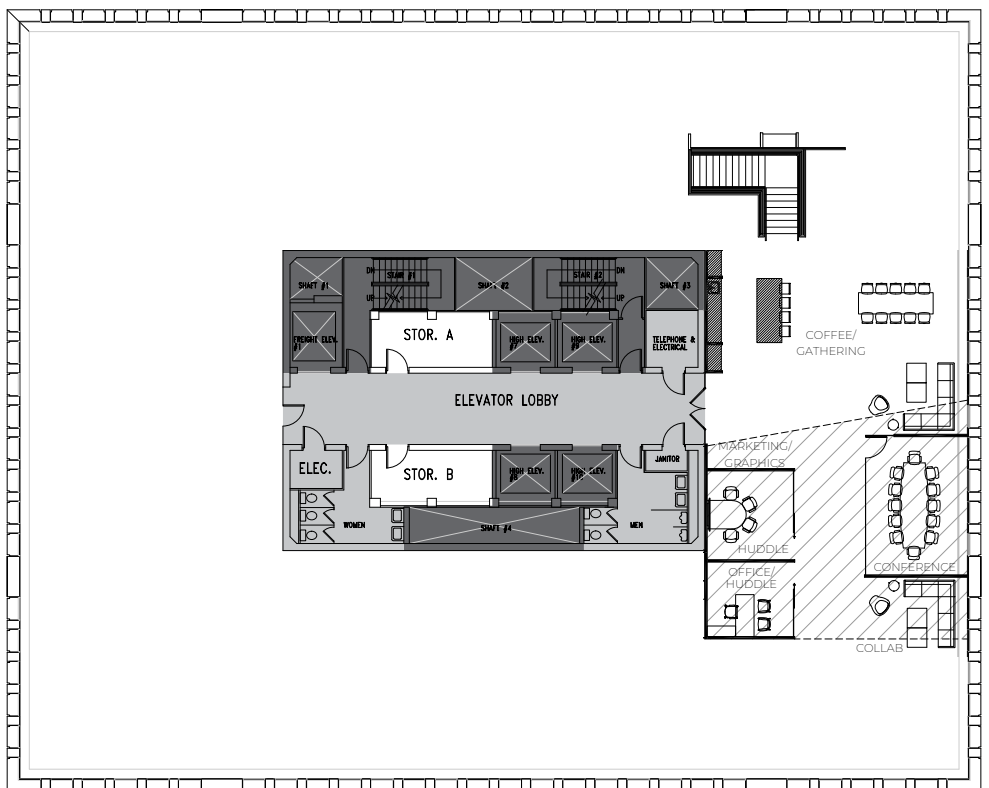


For virtual tour, visit:

bit.ly/2YHTscS

SUITE 2400

14,967 RSF



SPACE FEATURES

- » Available now!
- » Market ready work completed in North East corner
- » Full floor availability
- » West facing views
- » Interstitial staircase connecting to the 23rd floor



METROTRACT
SEATTLE



FINANCIAL CENTER

1215 Fourth Avenue
Seattle, Washington 98101

For further information,
please contact:

Damon McCartney

(206) 838-7633

mccartney@broderickgroup.com

David Greenwood

(206) 838-7635

greenwood@broderickgroup.com



Broderick Group, Inc.
10500 NE 8th Street, Suite 900
Bellevue, WA 98004
main: (206) 838-5775

broderickgroup.com

The information contained herein has been given to us
by the owner or sources which we deem reliable.
We have no reason to doubt its accuracy, but we do not
guarantee it. Prospective tenants should carefully verify
all information contained herein.

FULL FLOOR SUITE 2400 CONCEPT - OPEN OFFICE PLAN 14,967 RSF

N



*Proposed Plan

SPACE FEATURES

- » Total Occupants: 108
- » 140 RSF/person
- » 7 offices
- » 100 workstations
- » 1 reception area
- » 1 break room
- » 2 conference rooms
- » 2 phone rooms
- » 4 huddle rooms
- » 3 touchdown areas
- » 2 copy/work areas
- » 1 server/storage room



METROTRACT
SEATTLE