



# FINANCIAL CENTER

1215 Fourth Avenue  
Seattle, Washington 98101

For further information,  
please contact:

**Damon McCartney**

(206) 838-7633

mccartney@broderickgroup.com

**David Greenwood**

(206) 838-7635

greenwood@broderickgroup.com

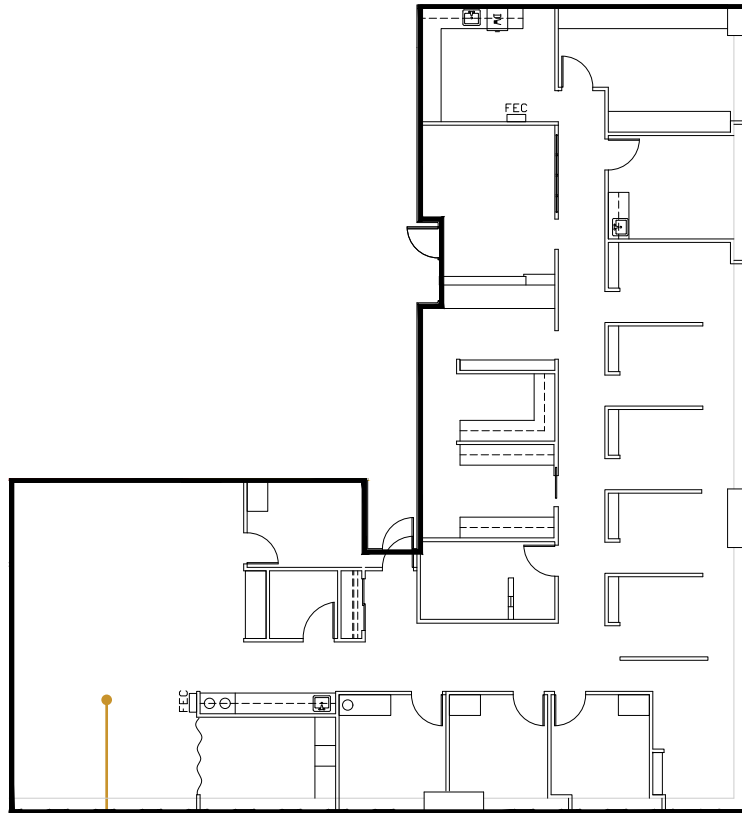


Broderick Group, Inc.  
10500 NE 8th Street, Suite 900  
Bellevue, WA 98004  
main: (206) 838-5775

broderickgroup.com

The information contained herein has been given to us  
by the owner or sources which we deem reliable.  
We have no reason to doubt its accuracy, but we do not  
guarantee it. Prospective tenants should carefully verify  
all information contained herein.

## SUITE 1000 4,719 RSF



Suite 1000

### SPACE FEATURES

- » Available now!
- » Multiple private offices
- » Kitchenette
- » Contiguous option with Suite 1010 for  
a total of 6,447 RSF



**METROTRACT**  
SEATTLE