



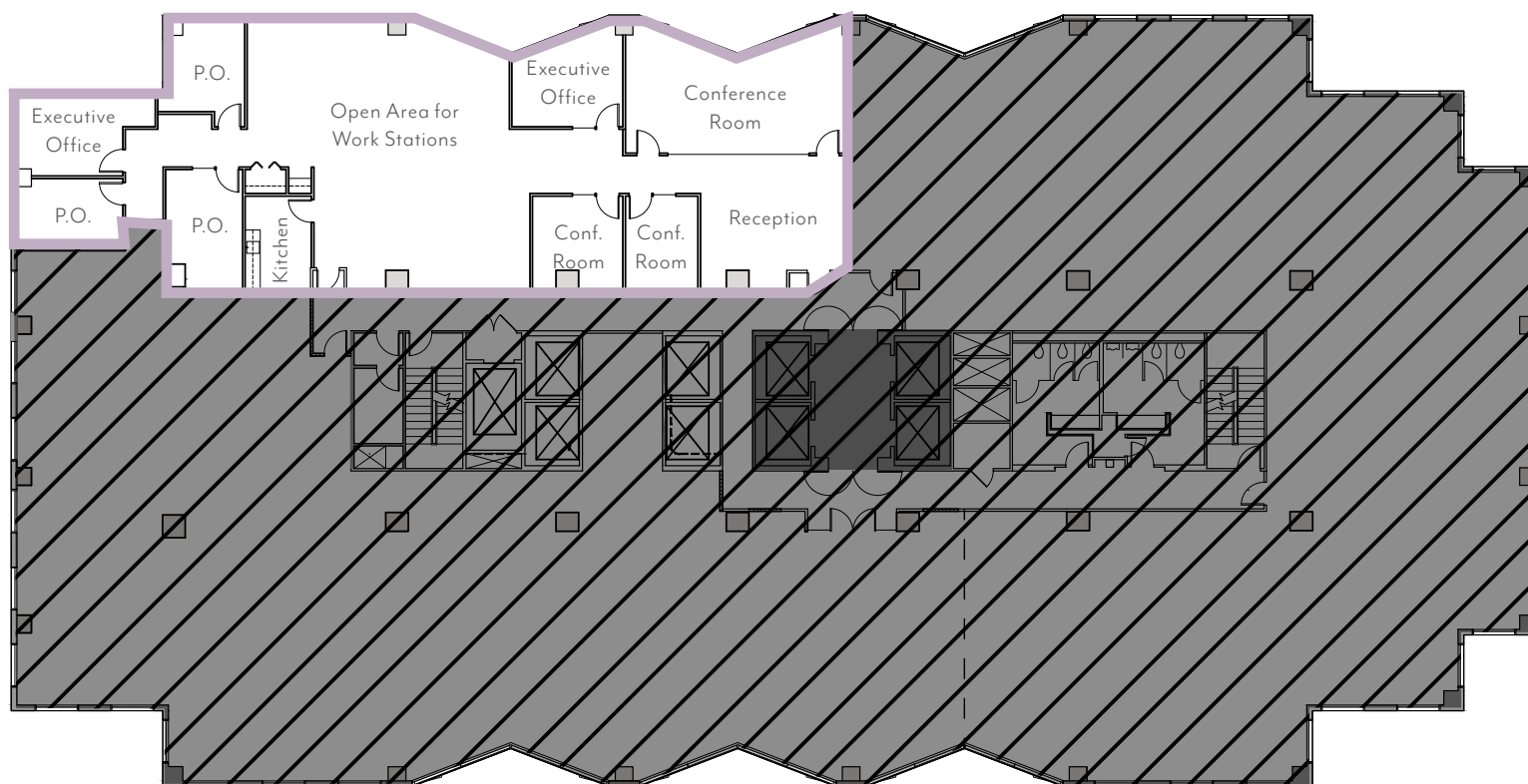
BELLEVUE PLACE BUILDING
10500 NE 8th Street
Bellevue, WA

BELLEVUE PLACE BUILDING

6th Floor • **Suite 625** • 4,421 RSF

SPACE FEATURES

- Available March 1, 2026
- Elevator lobby exposure with significant exterior window line
- Reception area, 3 conference rooms, 4 perimeter offices, open workstation areas for roughly 12-20, copy storage, and kitchen
- Polished concrete floor in entrance
- **Contiguous with Suite 600 for a total of 19,875 RSF**



BRODERICK
• GROUP •

For more information or to schedule a tour, please contact:

PAUL SWEENEY
425.646.5225
sweeney@broderickgroup.com

JIM KINERK
425.646.5221
kinerk@broderickgroup.com

CLAYTON HOLM
425.274.4287
holm@broderickgroup.com

The information contained herein has been given to us by the owner or sources which we deem reliable. We have no reason to doubt its accuracy, but we do not guarantee it. Prospective tenants should carefully verify all information contained herein.



BACK TO AVAILABLE SPACE



NORTH