



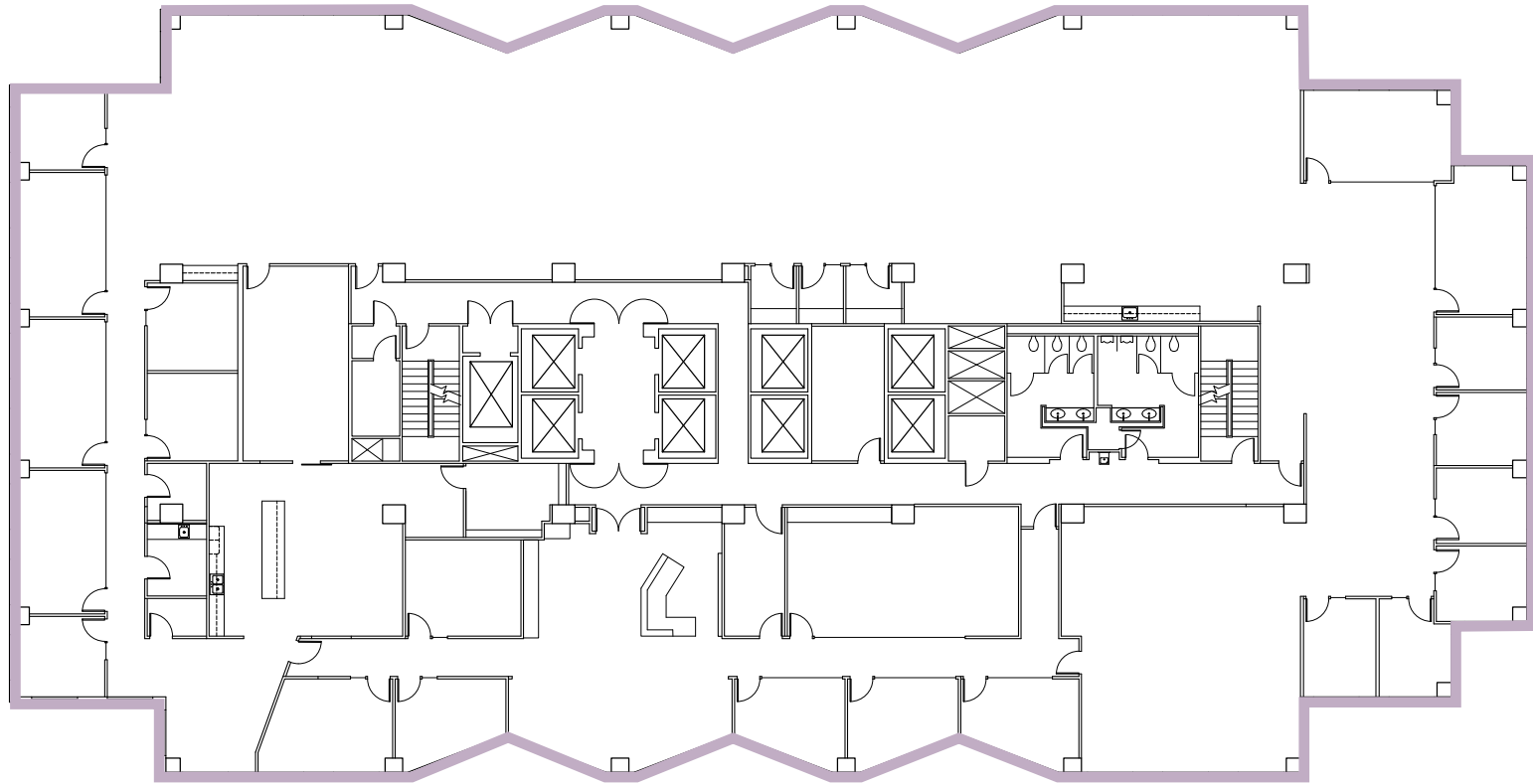
BELLEVUE PLACE BUILDING  
 10500 NE 8<sup>th</sup> Street  
 Bellevue, WA

# BELLEVUE PLACE BUILDING

13<sup>th</sup> Floor • Suite 1300 • 19,871 RSF

## SPACE FEATURES

- Available July 1, 2026
- Former Smartsheet main reception floor
- Balance of workstations, meeting rooms, and private offices
- Open plenum ceiling in most areas
- Aluminum frame finishes
- Great views of Lake Washington, Seattle, and Olympic Mountains



↑ BACK TO AVAILABLE SPACE



NORTH



For more information or to schedule a tour, please contact:

PAUL SWEENEY  
 425.646.5225  
[sweeney@broderickgroup.com](mailto:sweeney@broderickgroup.com)

JIM KINERK  
 425.646.5221  
[kinerk@broderickgroup.com](mailto:kinerk@broderickgroup.com)

CLAYTON HOLM  
 425.274.4287  
[holm@broderickgroup.com](mailto:holm@broderickgroup.com)

The information contained herein has been given to us by the owner or sources which we deem reliable. We have no reason to doubt its accuracy, but we do not guarantee it. Prospective tenants should carefully verify all information contained herein.