



BELLEVUE PLACE BUILDING  
10500 NE 8<sup>th</sup> Street  
Bellevue, WA

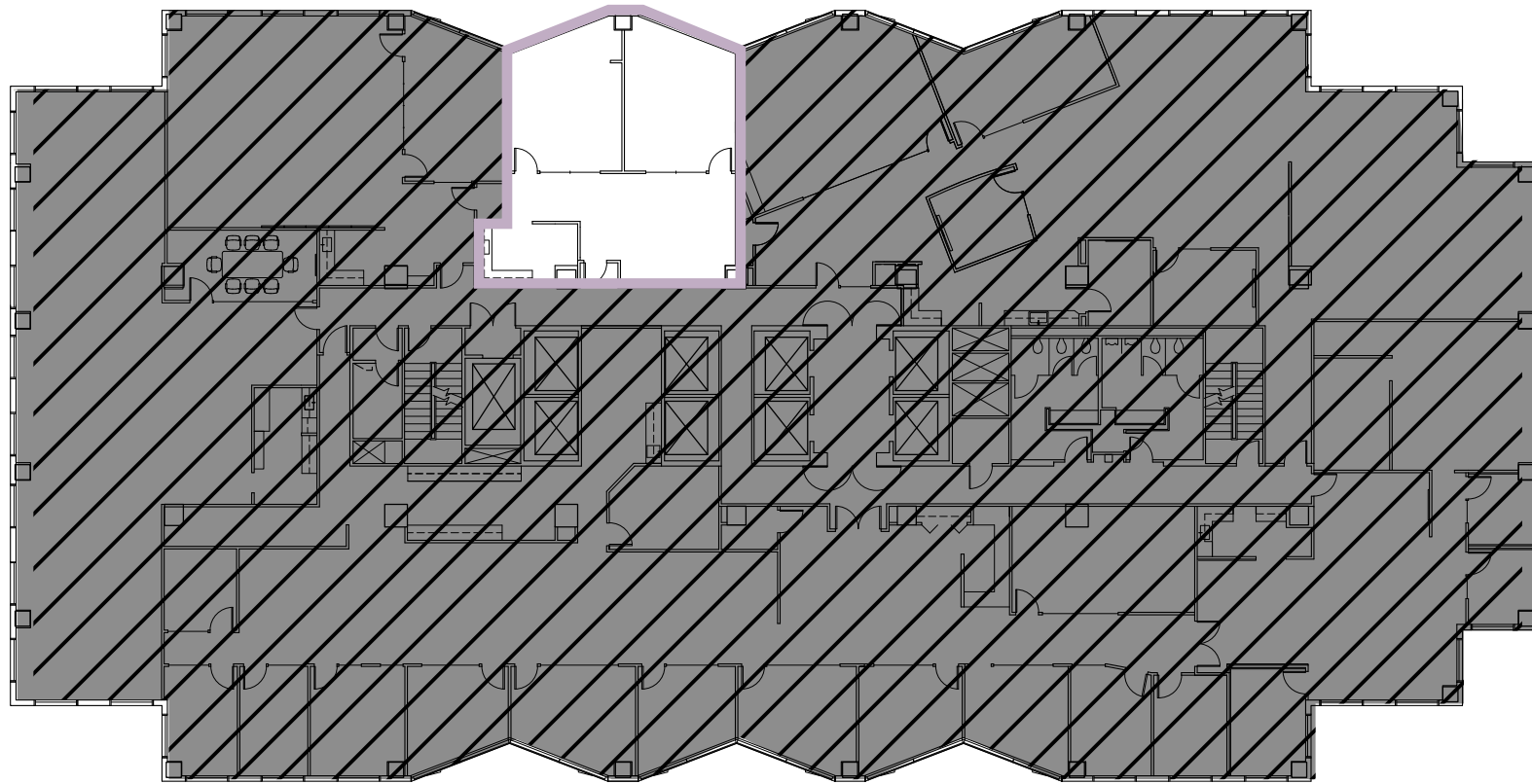
# BELLEVUE PLACE BUILDING

11<sup>th</sup> Floor • Suite 1140 • 1,321 RSF

 [CLICK TO TAKE A VIRTUAL TOUR](#)

## SPACE FEATURES

- Available Now
- Direct elevator lobby exposure
- Two large private offices
- Open area
- East facing with Bellevue CBD skyline views



For more information or to schedule a tour, please contact:

PAUL SWEENEY  
425.646.5225  
[sweeney@broderickgroup.com](mailto:sweeney@broderickgroup.com)

JIM KINERK  
425.646.5221  
[kinerk@broderickgroup.com](mailto:kinerk@broderickgroup.com)

CLAYTON HOLM  
425.274.4287  
[holm@broderickgroup.com](mailto:holm@broderickgroup.com)

The information contained herein has been given to us by the owner or sources which we deem reliable. We have no reason to doubt its accuracy, but we do not guarantee it. Prospective tenants should carefully verify all information contained herein.

 [BACK TO AVAILABLE SPACE](#)



NORTH