

AVAILABLE NOW

BRODERICK  
GROUP

13230

Bel-Red Rd • Bellevue, WA

5,000 SF  
WAREHOUSE FOR LEASE



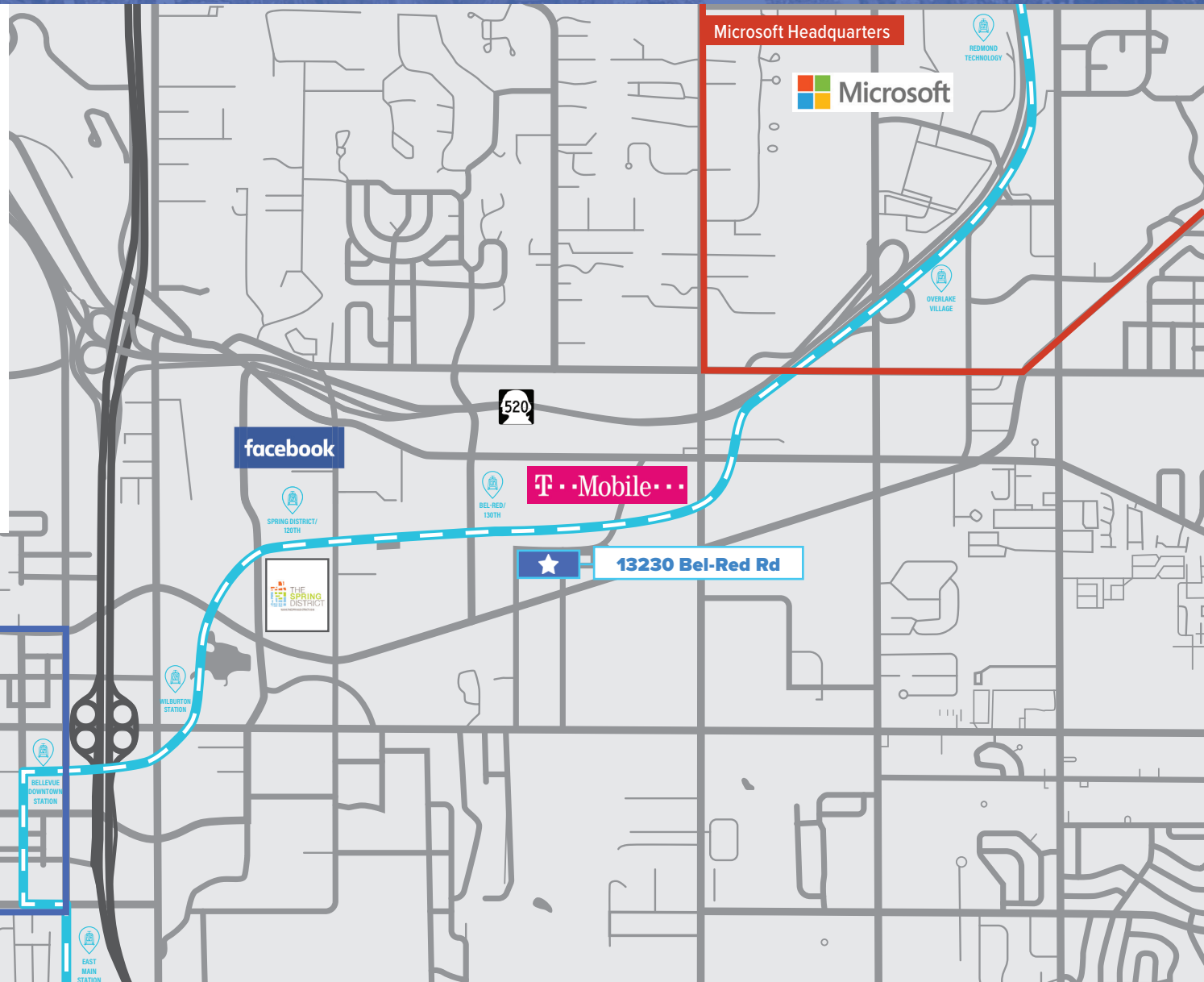
# 13230

Bel-Red Rd • Bellevue, WA

## LOCATION MAP

### PROPERTY DETAILS

- **Total Building: 5,000 SF**
- **Available Immediately**
- Convenient access to SR-520 & I-405
- Dock high and grade level loading
- 16' ceiling heights
- Future access to Sound Transit Bel-Red/130th Light Rail Station
- 3-Phase Power
- Call broker for rates



# 13230

Bel-Red Rd • Bellevue, WA

**BRODERICK**  
• GROUP •

**ERIC MEUSSNER**

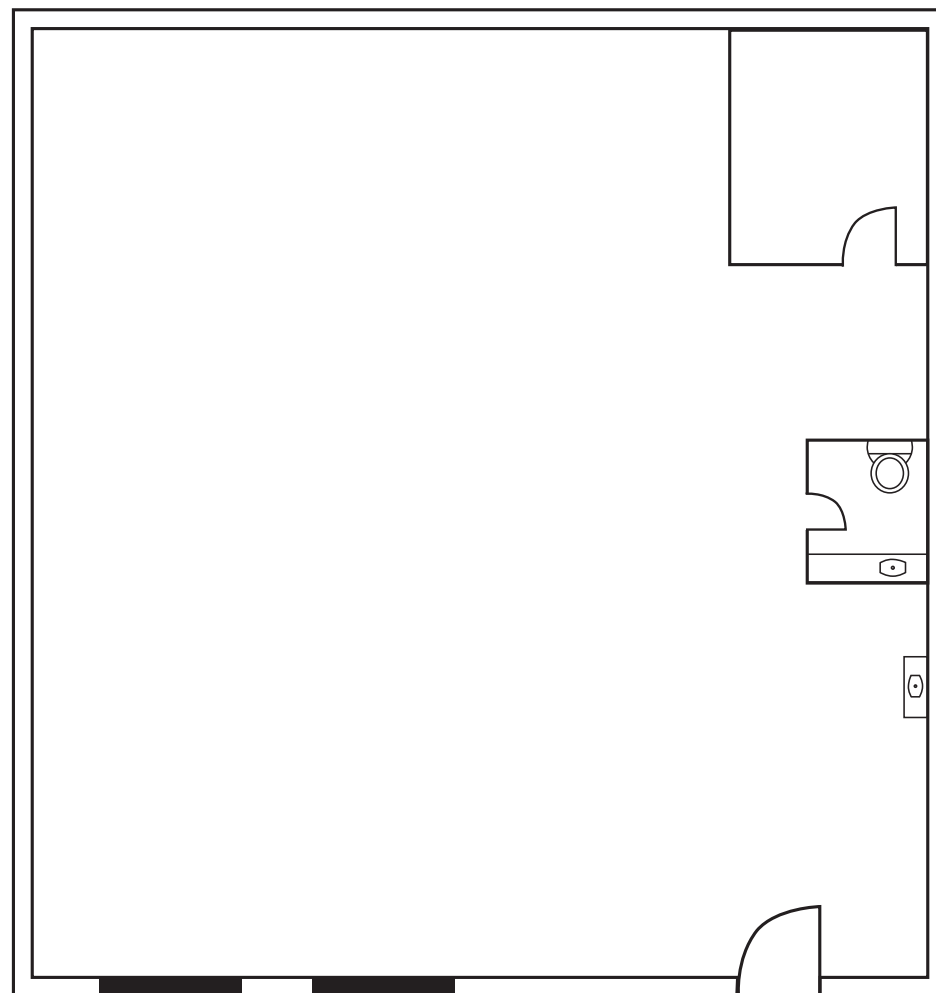
425.274.4282

[meussner@broderickgroup.com](mailto:meussner@broderickgroup.com)

*The information contained herein has been given to us by the owner or sources that we deem reliable. We have no reason to doubt its accuracy, but we do not guarantee it. Prospective tenants should carefully verify all information contained herein.*

## FLOOR 1

**Total SF: 5,000 SF**



**DH**

**GL**





# 13230

Bel-Red Rd • Bellevue, WA

**BRODERICK**  
• GROUP •

**ERIC MEUSSNER**

425.274.4282

[meussner@broderickgroup.com](mailto:meussner@broderickgroup.com)

*The information contained herein has been given to us by the owner or sources that we deem reliable. We have no reason to doubt its accuracy, but we do not guarantee it. Prospective tenants should carefully verify all information contained herein.*

## PHOTOS

