



# SYMETRA<sup>®</sup>

CENTER

777 108<sup>th</sup> Avenue NE  
Bellevue, WA 98004

## 21<sup>TH</sup> FLOOR

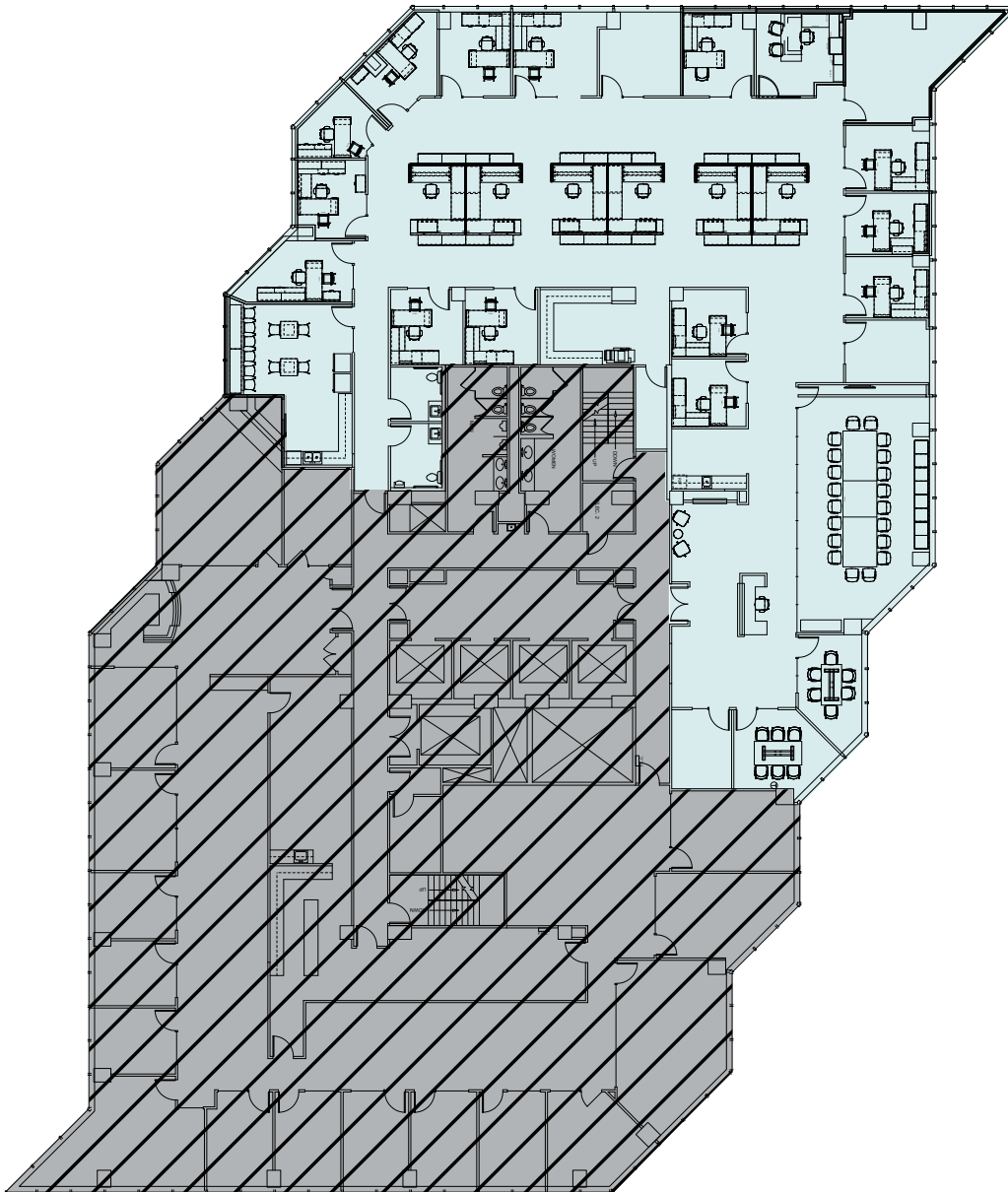
Suite 2150 • 9,852 RSF

Available 10/1/2025

- Fully furnished plug and play recently improved suite with direct elevator access
- West, North and East views



VIRTUAL TOUR



**SRO**® STERLING REALTY  
ORGANIZATION

**BRODERICK**  
• GROUP •

GRANT YERKE

425.646.5264

[yerke@broderickgroup.com](mailto:yerke@broderickgroup.com)

MATT SCHRECK

425.646.5232

[schreck@broderickgroup.com](mailto:schreck@broderickgroup.com)

The information contained herein has been given to us by the owner or sources that we deem reliable. We have no reason to doubt its accuracy, but we do not guarantee it. Prospective tenants should carefully verify all information contained herein.



**BACK TO  
AVAILABILITIES**