



RAINIER TOWER

1301 Fifth Avenue
Seattle, Washington 98101

Damon McCartney
(206) 838-7633
mccartney@broderickgroup.com

David Greenwood
(206) 838-7635
greenwood@broderickgroup.com



Broderick Group, Inc.
10500 NE 8th Street, Suite 900
Bellevue, WA 98004
main: (206) 838-5775

broderickgroup.com

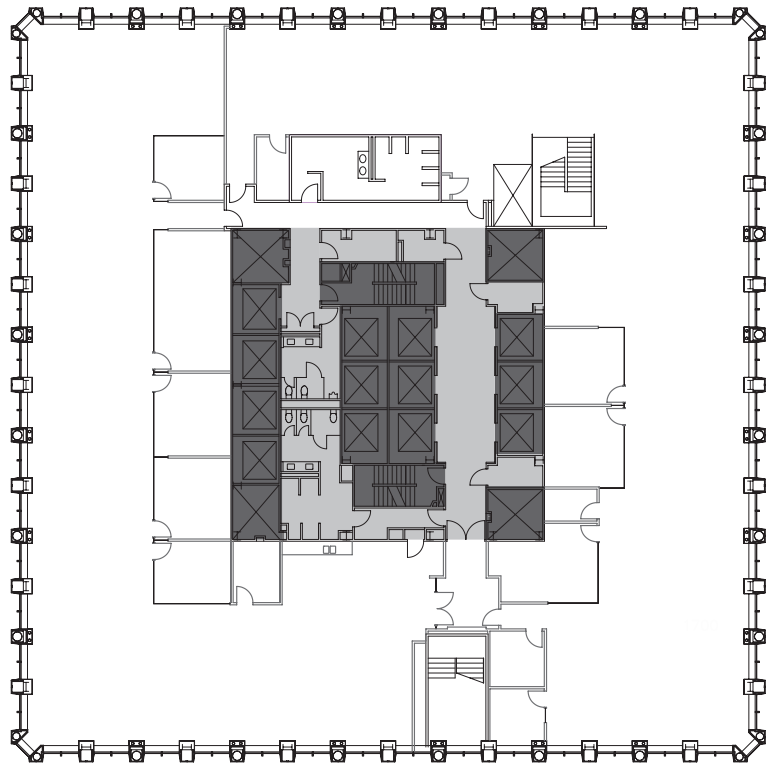
The information contained herein has been given to us by the owner or sources which we deem reliable. We have no reason to doubt its accuracy, but we do not guarantee it. Prospective tenants should carefully verify all information contained herein.



For virtual tour, visit:
bit.ly/4fzHB7X

SUITE 1700

18,710 RSF



SPACE FEATURES

- » Available now!
- » Multiple private offices
- » Multiple conference rooms
- » Open work area
- » Kitchenette
- » Break room
- » Can be combined with Suite 1600 by interstitial staircase for up to 37,953 RSF



METROTRACT
SEATTLE