



RAINIER TOWER

1301 Fifth Avenue
Seattle, Washington 98101

Damon McCartney

(206) 838-7633

mccartney@broderickgroup.com

David Greenwood

(206) 838-7635

greenwood@broderickgroup.com



Broderick Group, Inc.
10500 NE 8th Street, Suite 900
Bellevue, WA 98004
main: (206) 838-5775

broderickgroup.com

The information contained herein has been given to us by the owner or sources which we deem reliable. We have no reason to doubt its accuracy, but we do not guarantee it. Prospective tenants should carefully verify all information contained herein.

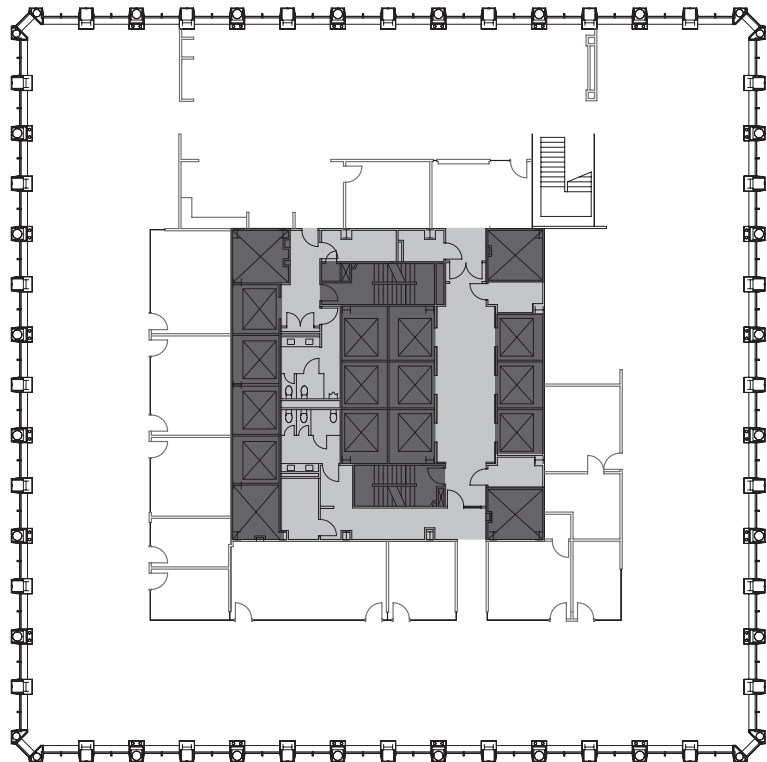


For virtual tour, visit:

bit.ly/3Ze1U4Z

SUITE 1600

19,243 RSF



SPACE FEATURES

- » Available now!
- » Multiple private offices
- » Multiple conference rooms
- » Open work area
- » Kitchenette
- » Break room
- » Can be combined with Suite 1700 by
interstitial staircase for up to 37,953 RSF



METROTRACT
SEATTLE