



PUGET SOUND PLAZA

1325 Fourth Avenue
Seattle, Washington 98101

Damon McCartney
(206) 838-7633
mccartney@broderickgroup.com

David Greenwood
(206) 838-7635
greenwood@broderickgroup.com



Broderick Group, Inc.
10500 NE 8th Street, Suite 900
Bellevue, WA 98004
main: (206) 838-5775

broderickgroup.com

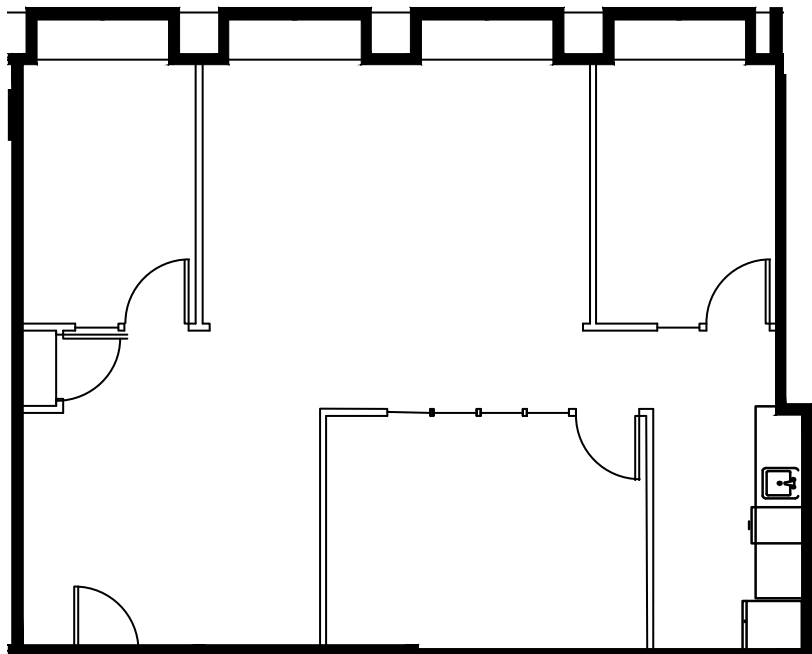
The information contained herein has been given to us by the owner or sources which we deem reliable. We have no reason to doubt its accuracy, but we do not guarantee it. Prospective tenants should carefully verify all information contained herein.



For virtual tour, visit:
bit.ly/3fsZgyx

SUITE 540

1,291 RSF



SPACE FEATURES

- » Available now!
- » Two private offices
- » Open work area
- » Conference room
- » West facing
- » Kitchenette
- » Contiguous option with Suite 535 for a total of 5,282 RSF



METROTRACT
SEATTLE