



# SUITE L-101

## 1,565 SF

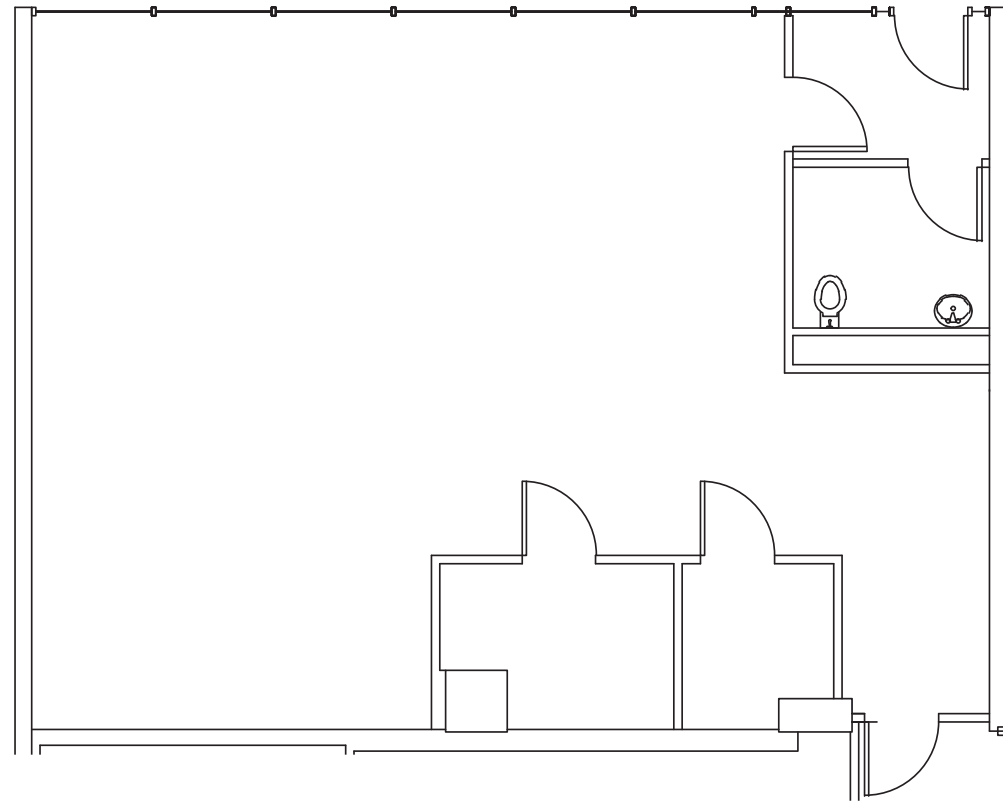
Large open work area

High ceilings

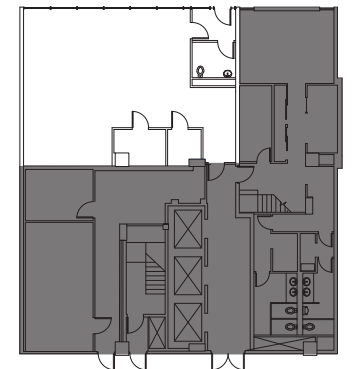
Server room

Private restroom

Available Now



[SEE ENLARGED FLOOR PLAN](#)



# KEY BANK BUILDING

10655 NE 4<sup>TH</sup> STREET • BELLEVUE, WA



For further information please contact exclusive leasing agents:

**COLIN TANIGAWA**

425.274.4283

[tanigawa@broderickgroup.com](mailto:tanigawa@broderickgroup.com)

**ERIC HAEHL**

425.646.5266

[haehl@broderickgroup.com](mailto:haehl@broderickgroup.com)

**TIM CANTRELL**

425.274.4292

[cantrell@broderickgroup.com](mailto:cantrell@broderickgroup.com)

[↑ BACK TO AVAILABLE](#)