



# SUITE 2600

## 12,249 RSF

CITY CENTER **BELLEVUE**

500 108th Avenue NE | Bellevue, Washington 98004

Available Now

### SAMPLE FURNITURE PLAN SHOWN

- Full floor availability
- 360 degree views of downtown Bellevue, Mt. Rainier, Lake Washington, Cascade and Olympic Mountains
- Private balcony
- Open work space, conference rooms, and kitchenette
- Interior stairwell connecting Suites 2600 and 2700
- **Must be leased with Suite 2700 for a total of 17,623 RSF**

 [VIEW VIRTUAL TOUR](#)



AMERICAN  
ASSETS  
TRUST

**BRODERICK**  
GROUP

JASON FURR  
(425) 646-5220

[furr@broderickgroup.com](mailto:furr@broderickgroup.com)

ERIC HAEHL  
(425) 646-5266

[haehl@broderickgroup.com](mailto:haehl@broderickgroup.com)

BRODERICK GROUP  
10500 NE 8th Street, Suite 900  
Bellevue, Washington 98004  
[broderickgroup.com](http://broderickgroup.com)

The information contained herein has been given to us by the owner or sources which we deem reliable. We have no reason to doubt its accuracy, but we do not guarantee it. Prospective tenants should carefully verify all information contained herein.

 [BACK TO AVAILABLE SPACE](#)

[citycenterbellevue.com](http://citycenterbellevue.com)





# SUITE 2700

## 5,374 RSF

CITY CENTER **BELLEVUE**

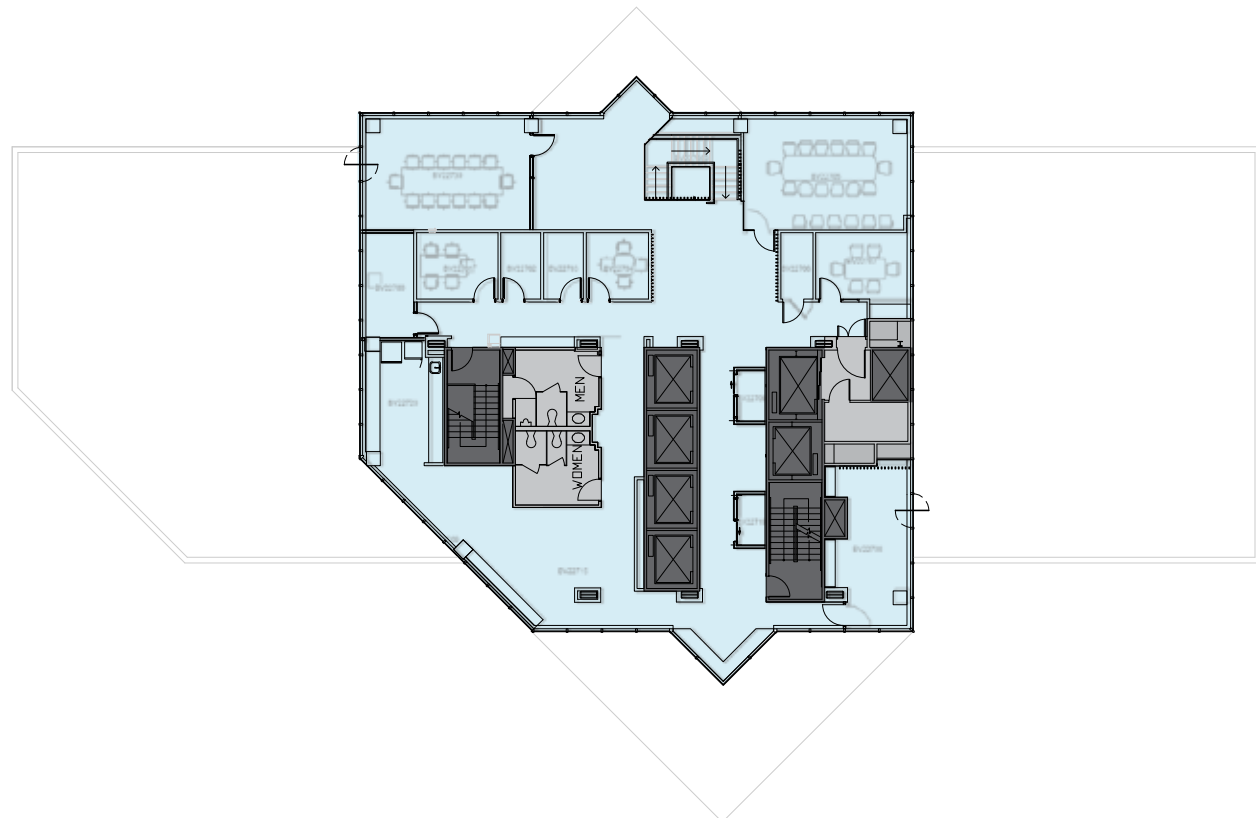
500 108th Avenue NE | Bellevue, Washington 98004

Available Now

### SAMPLE FURNITURE PLAN SHOWN

- Small full floor availability
- 360 degree views of downtown Bellevue, Mt. Rainier, Lake Washington, Cascade and Olympic Mountains
- Open work space, conference rooms, and kitchenette
- Interior stairwell connecting Suites 2600 and 2700
- **Must be leased with Suite 2600 for a total of 17,623 RSF**

 [VIEW VIRTUAL TOUR](#)



AMERICAN  
ASSETS  
TRUST 

**BRODERICK**  
GROUP

JASON FURR  
(425) 646-5220

[furr@broderickgroup.com](mailto:furr@broderickgroup.com)

ERIC HAEHL  
(425) 646-5266

[haehl@broderickgroup.com](mailto:haehl@broderickgroup.com)

BRODERICK GROUP  
10500 NE 8th Street, Suite 900  
Bellevue, Washington 98004  
[broderickgroup.com](http://broderickgroup.com)

The information contained herein has been given to us by the owner or sources which we deem reliable. We have no reason to doubt its accuracy, but we do not guarantee it. Prospective tenants should carefully verify all information contained herein.

 [BACK TO AVAILABLE SPACE](#)

[citycenterbellevue.com](http://citycenterbellevue.com)

