



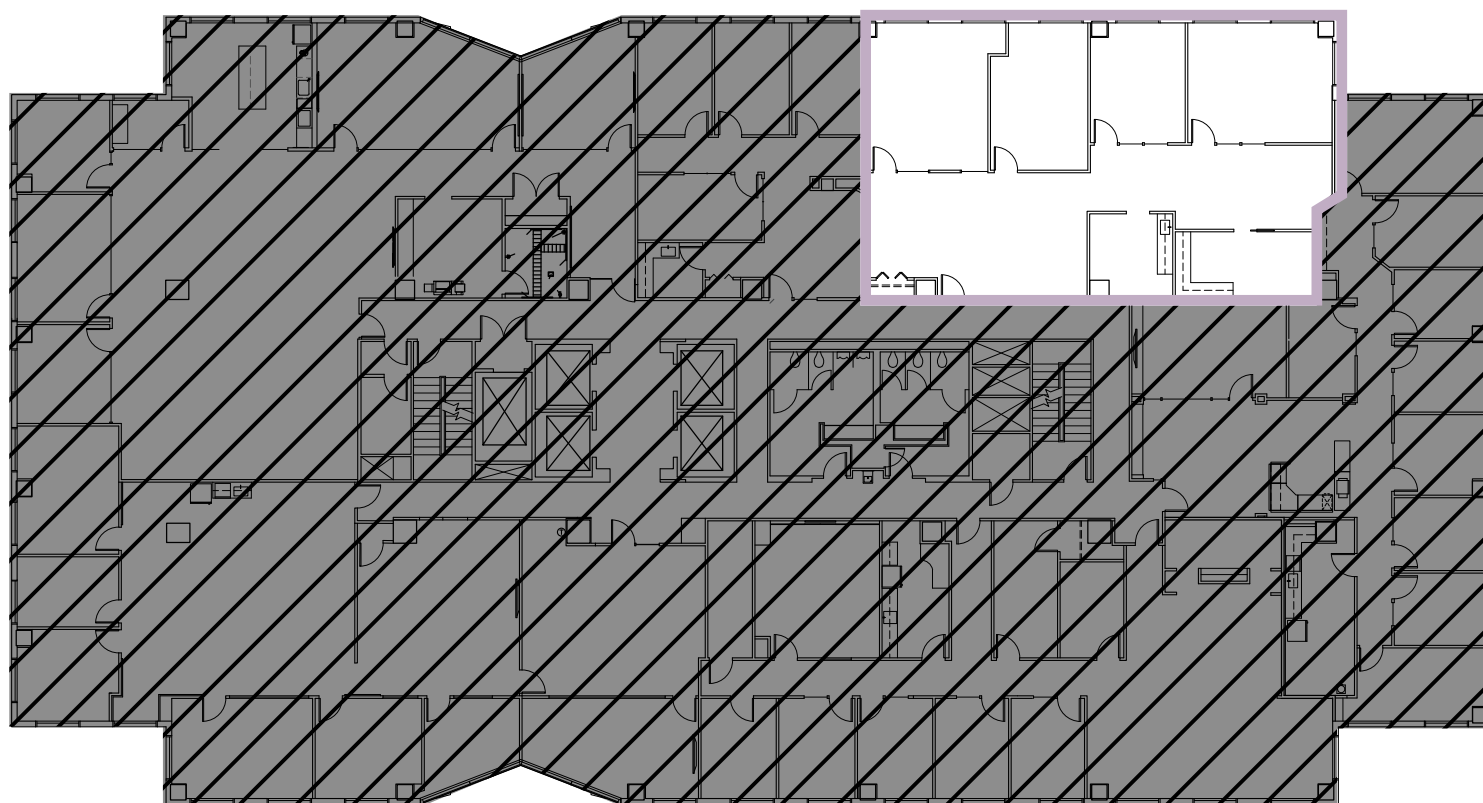
BELLEVUE PLACE BUILDING
 10500 NE 8th Street
 Bellevue, WA

BELLEVUE PLACE BUILDING

19th Floor • Suite 1925 • 2,786 RSF

SPACE FEATURES

- Available 7/1/2024
- 4 large private offices
- Print and file storage area
- Kitchenette
- East facing with Bellevue CBD skyline views



 [BACK TO AVAILABLE SPACE](#)



NORTH



For more information or to schedule a tour, please contact:

PAUL SWEENEY
 425.646.5225

sweeney@broderickgroup.com

JIM KINERK
 425.646.5221
kinerk@broderickgroup.com

CLAYTON HOLM
 425.274.4287
holm@broderickgroup.com

The information contained herein has been given to us by the owner or sources which we deem reliable. We have no reason to doubt its accuracy, but we do not guarantee it. Prospective tenants should carefully verify all information contained herein.