



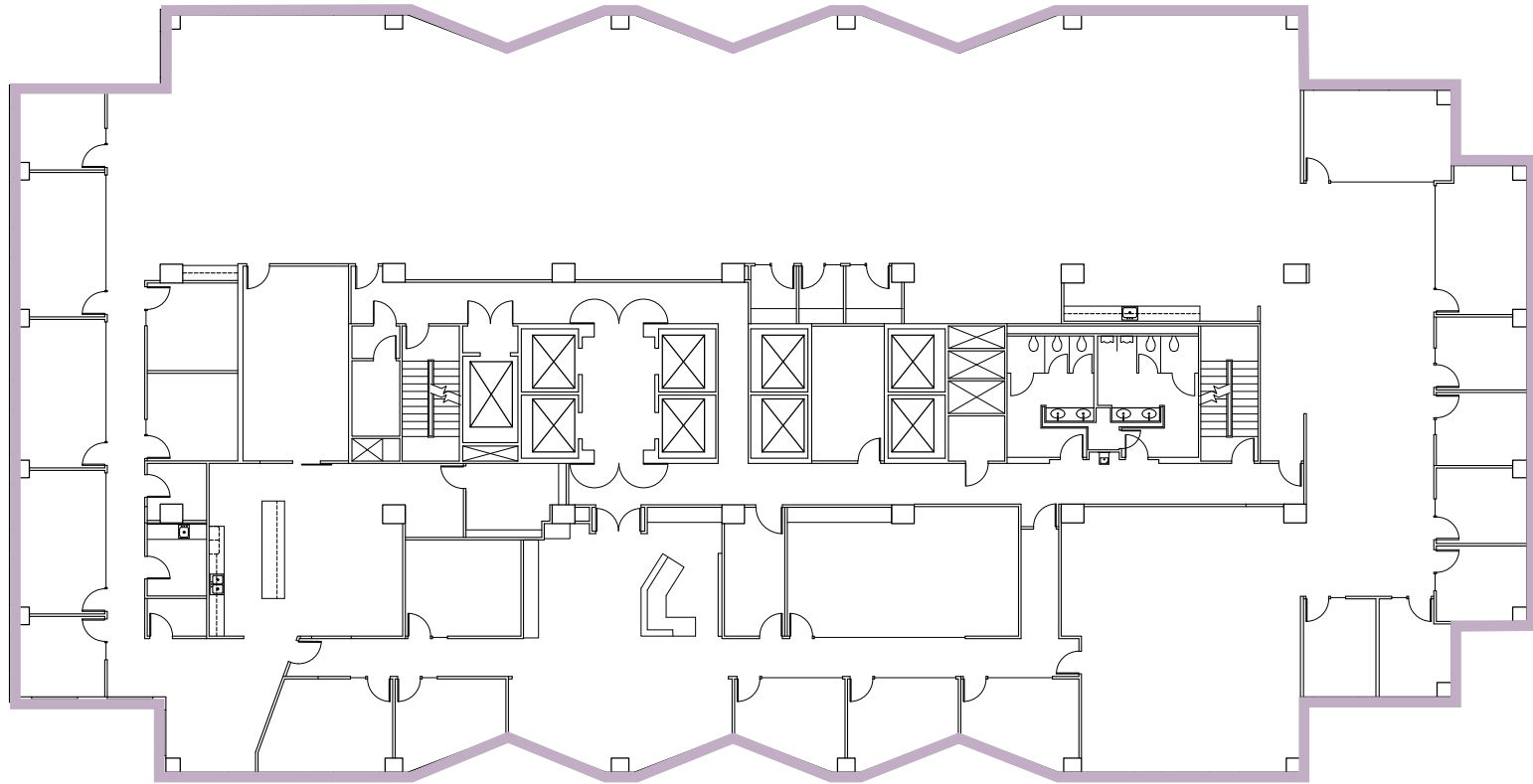
BELLEVUE PLACE BUILDING
10500 NE 8th Street
Bellevue, WA

BELLEVUE PLACE BUILDING

13th Floor • **Suite 1300** • 19,871 RSF

SPACE FEATURES

- Available July 1, 2026 (potentially sooner)
- Former Smartsheet reception floor
- Aluminum frame finishes
- Open plenum ceiling in most areas
- Great views of Lake Washington, Seattle, and Olympic Mountains
- Balance of workstations, meeting rooms, and private offices



BRODERICK
• GROUP •

For more information or to schedule a tour, please contact:

PAUL SWEENEY
425.646.5225
sweeney@broderickgroup.com

JIM KINERK
425.646.5221
kinerk@broderickgroup.com

CLAYTON HOLM
425.274.4287
holm@broderickgroup.com

The information contained herein has been given to us by the owner or sources which we deem reliable. We have no reason to doubt its accuracy, but we do not guarantee it. Prospective tenants should carefully verify all information contained herein.



BACK TO AVAILABLE SPACE



NORTH