



# BELLEVUE PLACE

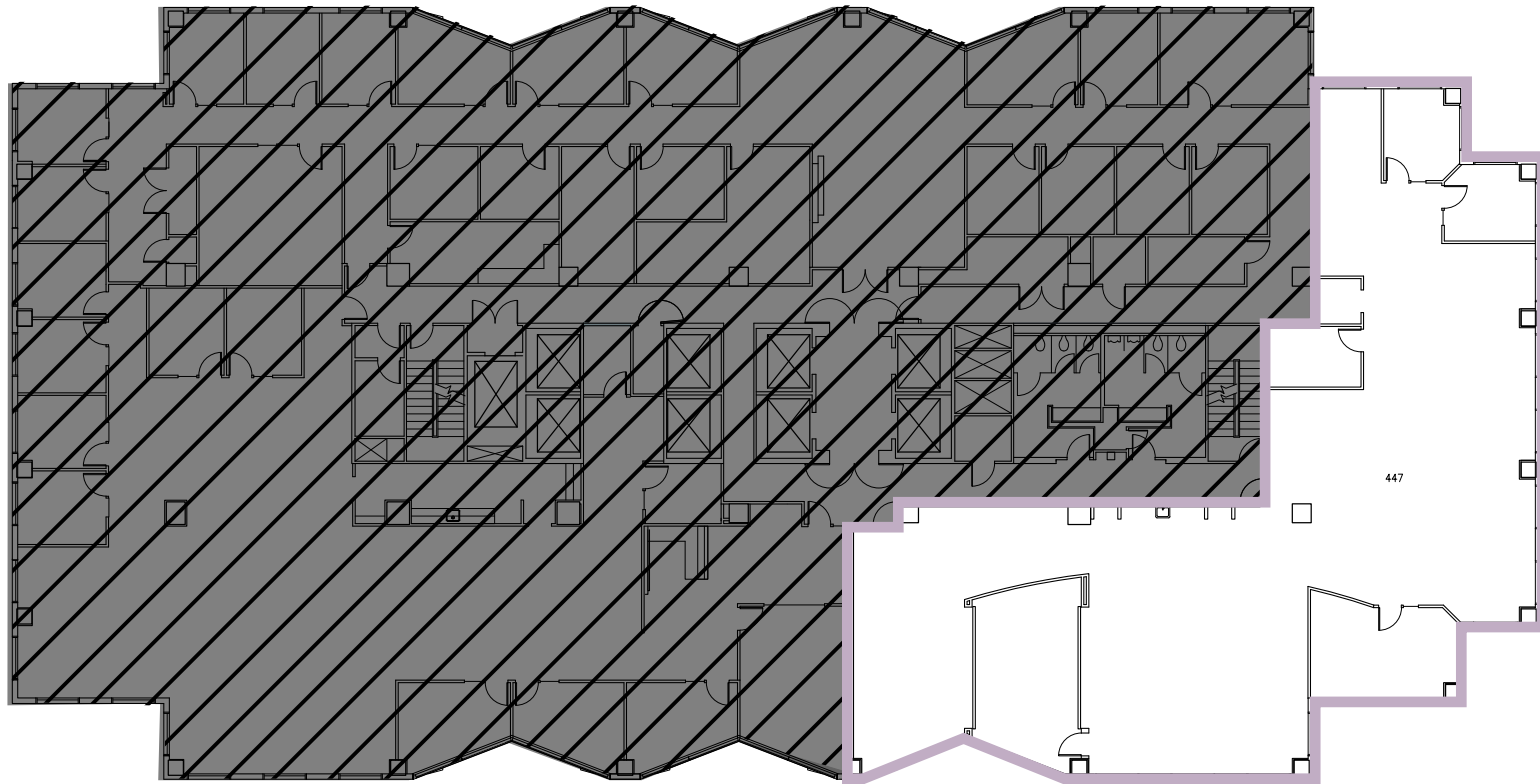
BELLEVUE PLACE BUILDING  
10500 NE 8<sup>th</sup> Street  
Bellevue, WA

## BELLEVUE PLACE BUILDING

10<sup>th</sup> Floor • **Suite 1050** • 5,594 RSF

### SPACE FEATURES

- Available with 30 Days' Notice
- Creative space with open plenum ceiling throughout
- Polished concrete floors
- Unique large conference room with roll up garage doors



**BRODERICK**  
• GROUP •

For more information or to schedule a tour, please contact:

PAUL SWEENEY  
425.646.5225  
[sweeney@broderickgroup.com](mailto:sweeney@broderickgroup.com)

JIM KINERK  
425.646.5221  
[kinerk@broderickgroup.com](mailto:kinerk@broderickgroup.com)

CLAYTON HOLM  
425.274.4287  
[holm@broderickgroup.com](mailto:holm@broderickgroup.com)

The information contained herein has been given to us by the owner or sources which we deem reliable. We have no reason to doubt its accuracy, but we do not guarantee it. Prospective tenants should carefully verify all information contained herein.

 [BACK TO AVAILABLE SPACE](#)



NORTH