

WESTPARK

BUSINESS PARK

15301 NE 90th Street
Redmond, WA

SUBLEASE AVAILABLE

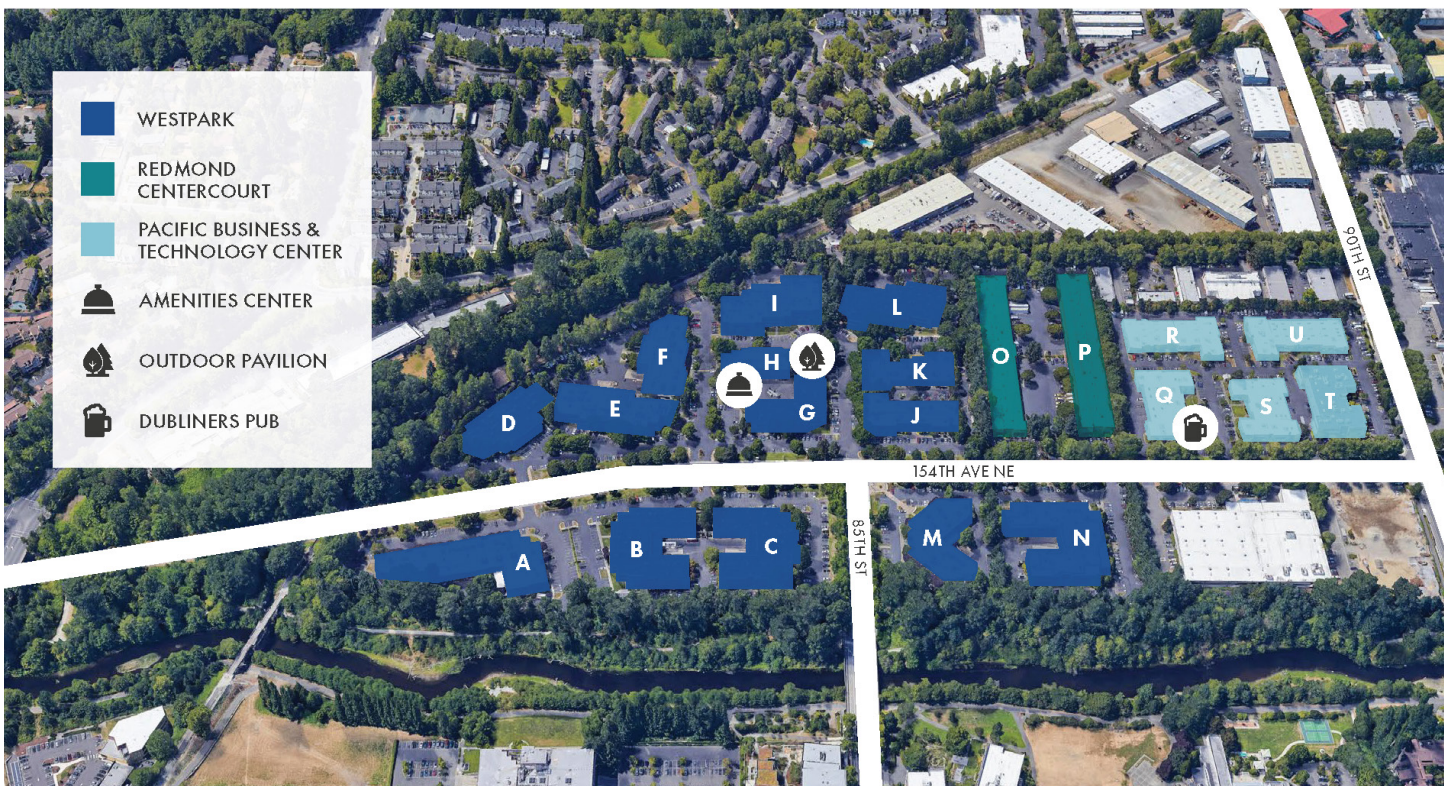
Suite Q-130: Total: 2,575 SF (Office: 1,070 SF / Warehouse: 1,505 SF)

Term: Through 2/29/2024, longer term direct deal available via landlord

Rate: Call broker

Availability: Now

Notes: Rare, small flex space. Recently improved.



WESTPARK

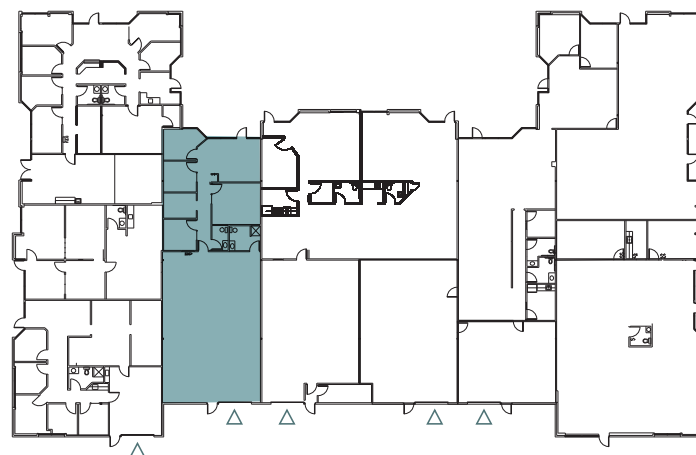
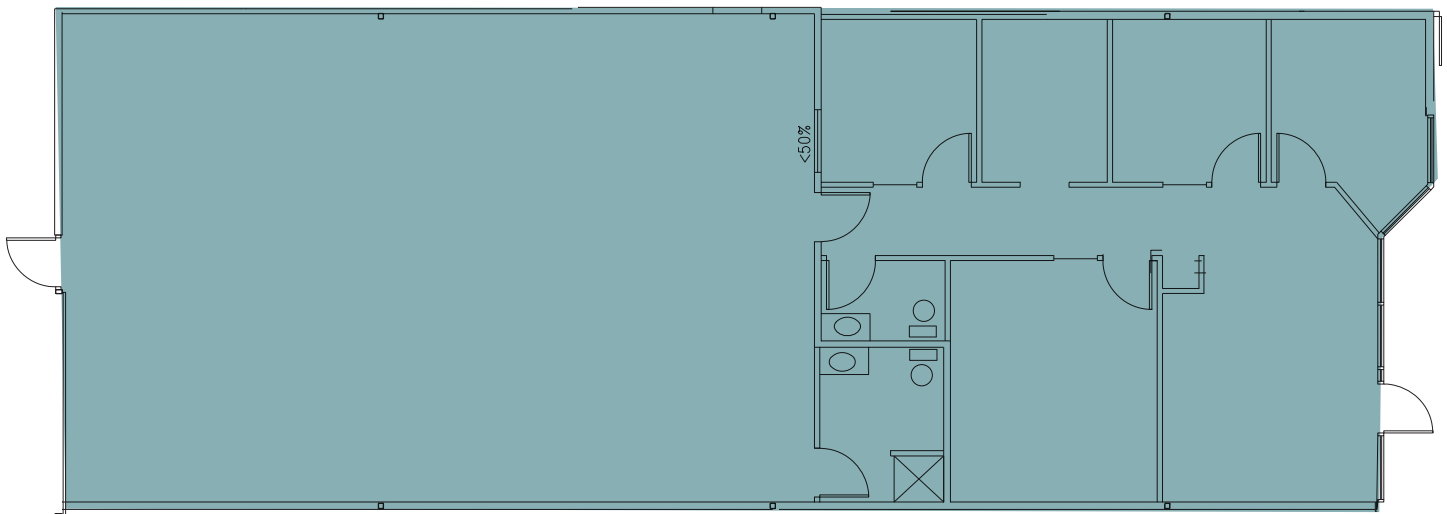
BUSINESS PARK

15301 NE 90th Street
Redmond, WA

SUBLEASE AVAILABLE

Suite Q-130

2,575 SF Total Available • **1,070 SF** Office • **1,505 SF** Warehouse



△ GRADE LEVEL
▲ DOCK HIGH