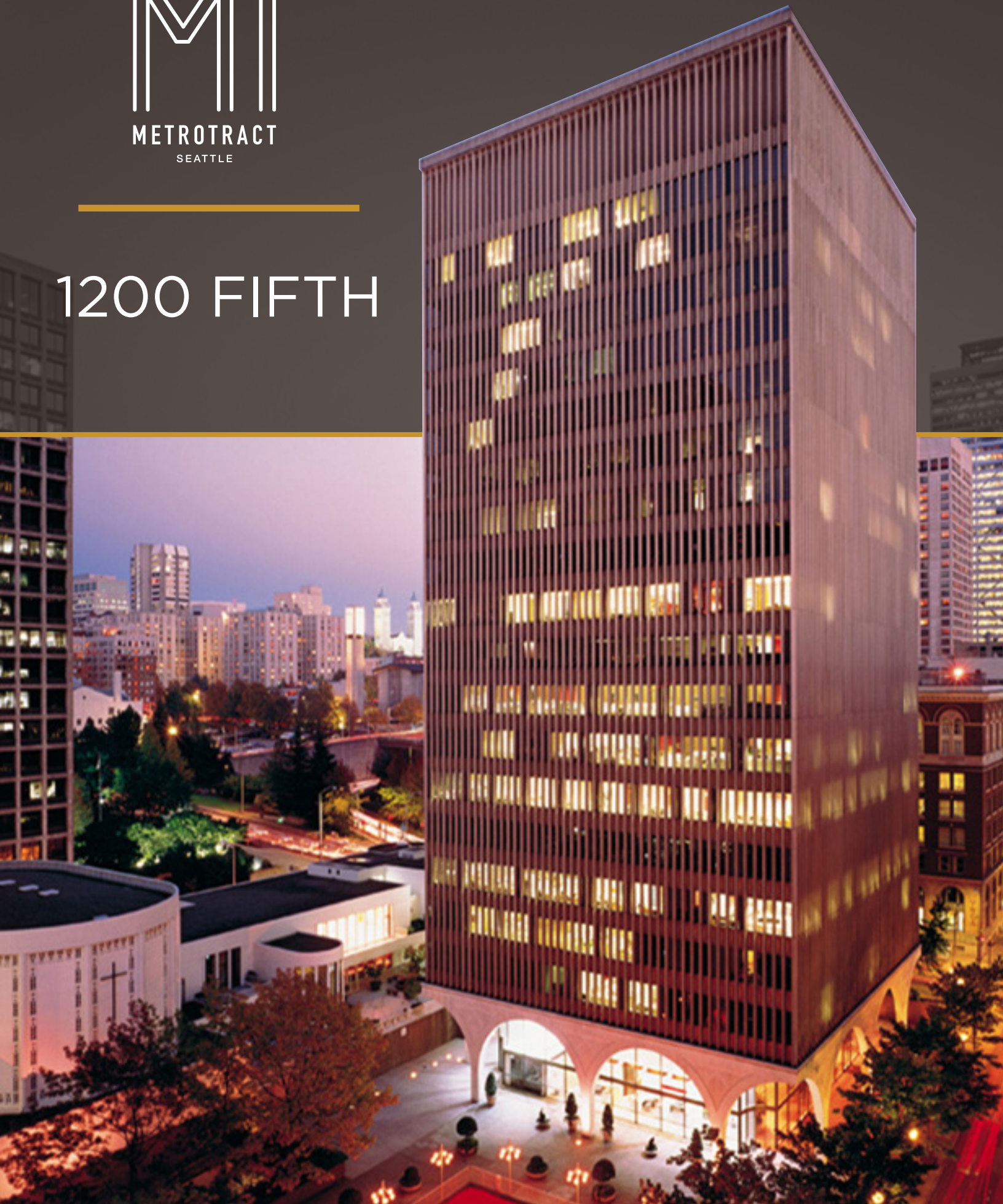




# 1200 FIFTH



# 1200 FIFTH

1200 Fifth Avenue | Seattle, Washington 98101



## BUILDING FACTS

- » Total Building Size .....234,041 RSF
- » Number of Floors.....20
- » Average Floor Plate .....12,600 RSF
- » Year Built.....1964
- » Parking Ratio .....1 / 1,800 SF
- » LEED Gold Certified
- » Fitwel Viral Response Certified

## BUILDING AMENITIES

- » » Conference room facility
- » » Lobby
- » » Shower
- » » Secure bike storage / day-use lockers
  - » 161 parking stalls
  - » EV charging system
- » » MT Fitness Center located on the Lower Level of Rainier Tower



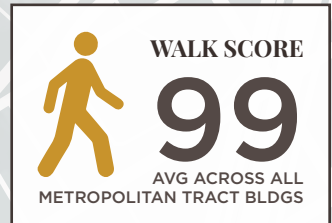
**Fitwel®**  
Viral Response  
Certified

 Click the play buttons for virtual tours



# 1200 FIFTH

1200 Fifth Avenue | Seattle, Washington 98101



## Lifestyle

1. Regal Cinemas
2. Westlake Park
3. Home Street Bank
4. 5th Avenue Theater
5. U.S. Post Office
6. Key Bank
7. Benaroya Hall
8. Seattle Art Museum
9. Queen Bee Nail Spa
10. American West Bank
11. UPS Store
12. Union Bank
13. Seattle Infant Development Center
14. Banner Bank
15. Bank of America
16. Seattle Public Library
17. Samir's Salon
18. Silicon Valley Bank
19. Downtown Dentistry
20. Capelli's Barbershop
21. Northwest Bank
22. YMCA - Facility / Child Care
23. Equinox Gym
24. Graham Rehabilitation and Wellness Center, Inc.
25. PCC Market

## Restaurant / Bar

1. Cheesecake Factory
2. SPIN Seattle
3. Ben Paris
4. Hard Rock Café
5. Blarney Stone Pub
6. Japonessa
7. Wild Ginger
8. Elephant & Castle
9. Ruth's Chris Steak House
10. Cortina
11. Goldfinch Tavern
12. Post Alley Pizza
13. Purple Café & Wine Bar
14. Outlier
15. Lobby Court
16. Tulio
17. Charlotte Restaurant & Lounge
18. Schuckers
19. Capital Grille
20. Fogo de Chao

## Coffee House

1. Starbucks
2. Fonte
3. Pegasus Coffee Bar
4. Vovito
5. Retro Coffee
6. Caffe Ladro
7. Cafe Miglore

## Hotel

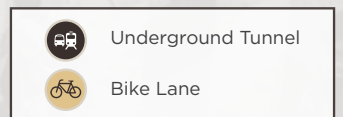
1. Grand Hyatt Hotel
2. Sheraton Hotel
3. Hilton Seattle
4. Hotel Vintage Seattle
5. W Seattle
6. Hotel 1000
7. Renaissance Seattle Hotel

## Deli / Grab & Go

1. McDonald's
2. Pho 25
3. Chipotle
4. Gelatiamo
5. Sushi Kudasai
6. Jimmy John's
7. Subway
8. MOD Pizza
9. Melange Market
10. The Deli
11. Potbelly Sandwich Shop
12. Blue Water Taco Grill
13. Homegrown Sustainable Sandwich Shop
14. Evergreens Salad
15. Market Fresh
16. PCC Market (NEW)
17. Kudedon Noodles
18. Mendocino Farms

## Retail

1. Old Navy
2. AT&T
3. Nordstrom Rack
4. ZARA
5. Target
6. Nordstrom
7. Ross Dress for Less
8. Urban Outfitters
9. Ben Bridge Jeweler
10. Watson Kennedy Fine Home
11. Bartell Drugs





**METROTRACT**  
SEATTLE



# 1200 FIFTH

1200 Fifth Avenue  
Seattle, Washington 98101



## CURRENT AVAILABLE SUITES

Floor / Suite	RSF	Comments
<a href="#"><u>20/2010</u></a>	2,019	<b>Available early Q3 2025!</b> Spec Suite. 5 private offices and kitchenette. Lobby exposure.
<a href="#"><u>19/1925</u></a>	913	<b>Available 7/1/2025.</b> 3 private offices.
<a href="#"><u>18/1830</u></a>	2,107	<b>Available now!</b> 6 private offices, 1 conference room, kitchenette and utility room. Virtual Tour available at <a href="https://bit.ly/3xKKy4R">bit.ly/3xKKy4R</a>
<a href="#"><u>18/1820</u></a>	3,718	<b>Available now!</b> 4 private offices, 1 conference room, open work area and kitchenette. Virtual Tour available at <a href="https://bit.ly/4eXFoTF">bit.ly/4eXFoTF</a>
<a href="#"><u>17/1750</u></a>	2,035	<b>Available 5/31/2025.</b> Multiple private offices, multiple conference rooms and open work area.
<a href="#"><u>15/1565</u></a>	2,069	<b>Available now!</b> Spec Suite Available Q2 2025. 2 conferences and a kitchenette.
<a href="#"><u>14/1400</u></a>	1,685	<b>Available 7/31/2025.</b> Multiple private offices, conference room and kitchenette.
<a href="#"><u>12/1220</u></a>	3,644	<b>Available now!</b> 6 private offices, 2 conference rooms, reception area, utility room, kitchenette and break room. Virtual Tour available at <a href="https://bit.ly/49jx1P1">bit.ly/49jx1P1</a>
<a href="#"><u>12/1200</u></a>	1,977	<b>Available now!</b> Multiple private offices, multiple conference rooms, break area and kitchenette
<a href="#"><u>12/1217</u></a>	4,177	<b>Available now!</b> 6 private offices, 2 conference rooms, reception area, utility room, kitchenette and break room.
<a href="#"><u>11/1100</u></a>	4,915	<b>Available now!</b> New Spec Suite, open work area, 1 conference room, 4 private offices, break room, reception area and kitchenette. Virtual Tour available at <a href="https://bit.ly/3YXuUuT">bit.ly/3YXuUuT</a>
<a href="#"><u>7/720</u></a>	2,884	<b>Available now!</b> Open work area, 3 private offices, break area and kitchenette.
<a href="#"><u>2/200</u></a>	6,132	<b>Available now!</b> Cold shell condition.

**Damon McCartney**

(206) 838-7633

[mccartney@broderickgroup.com](mailto:mccartney@broderickgroup.com)

**David Greenwood**

(206) 838-7635

[greenwood@broderickgroup.com](mailto:greenwood@broderickgroup.com)



Broderick Group, Inc.  
10500 NE 8th Street, Suite 900  
Bellevue, WA 98004  
main: (206) 838-5775

[broderickgroup.com](http://broderickgroup.com)

The information contained herein has been given to us by the owner or sources which we deem reliable. We have no reason to doubt its accuracy, but we do not guarantee it. Prospective tenants should carefully verify all information contained herein.





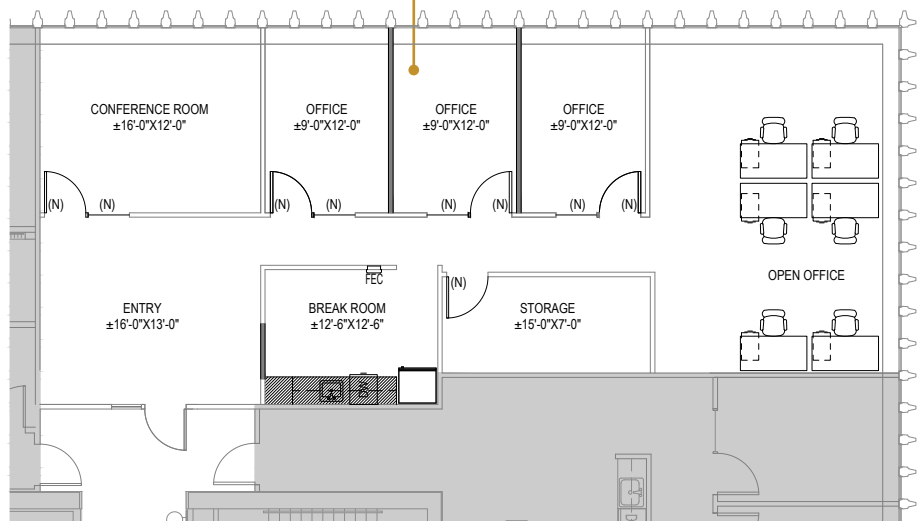
# 1200 FIFTH

1200 Fifth Avenue  
Seattle, Washington 98101

## SUITE 2010 2,019 RSF

N

Suite 2010



**Damon McCartney**

(206) 838-7633

mccartney@broderickgroup.com

**David Greenwood**

(206) 838-7635

greenwood@broderickgroup.com



Broderick Group, Inc.  
10500 NE 8th Street, Suite 900  
Bellevue, WA 98004  
main: (206) 838-5775

broderickgroup.com

### SPACE FEATURES

- » Available early Q3 2025!
- » Spec Suite
- » 5 private offices
- » Kitchenette
- » Lobby exposure

The information contained herein has been given to us by the owner or sources which we deem reliable. We have no reason to doubt its accuracy, but we do not guarantee it. Prospective tenants should carefully verify all information contained herein.



**METROTRACT**  
SEATTLE



# 1200 FIFTH

1200 Fifth Avenue  
Seattle, Washington 98101



**Damon McCartney**

(206) 838-7633

mccartney@broderickgroup.com

**David Greenwood**

(206) 838-7635

greenwood@broderickgroup.com



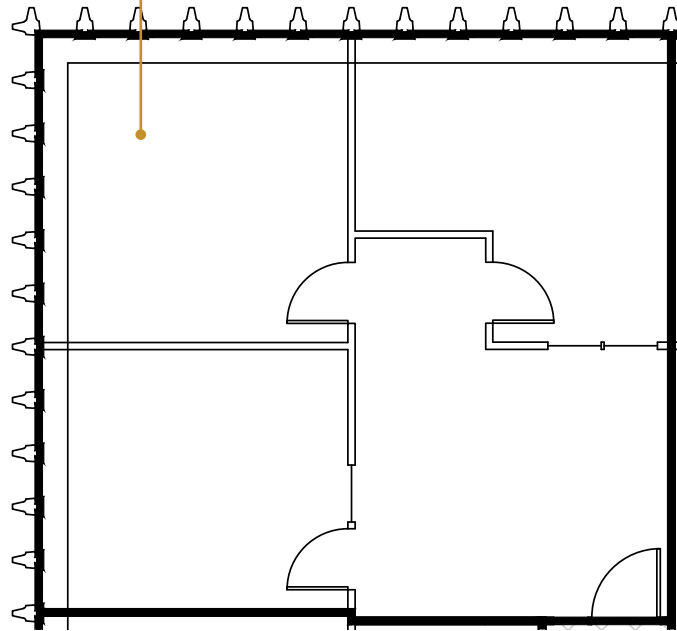
Broderick Group, Inc.  
10500 NE 8th Street, Suite 900  
Bellevue, WA 98004  
main: (206) 838-5775

broderickgroup.com

The information contained herein has been given to us  
by the owner or sources which we deem reliable.  
We have no reason to doubt its accuracy, but we do not  
guarantee it. Prospective tenants should carefully verify  
all information contained herein.

## SUITE 1925 913 RSF

Suite 1925



### SPACE FEATURES

- » Available 7/1/2025
- » 3 private offices



**METROTRACT**  
SEATTLE



# 1200 FIFTH

1200 Fifth Avenue  
Seattle, Washington 98101

**Damon McCartney**

(206) 838-7633

mccartney@broderickgroup.com

**David Greenwood**

(206) 838-7635

greenwood@broderickgroup.com



Broderick Group, Inc.  
10500 NE 8th Street, Suite 900  
Bellevue, WA 98004  
main: (206) 838-5775

broderickgroup.com

The information contained herein has been given to us by the owner or sources which we deem reliable. We have no reason to doubt its accuracy, but we do not guarantee it. Prospective tenants should carefully verify all information contained herein.



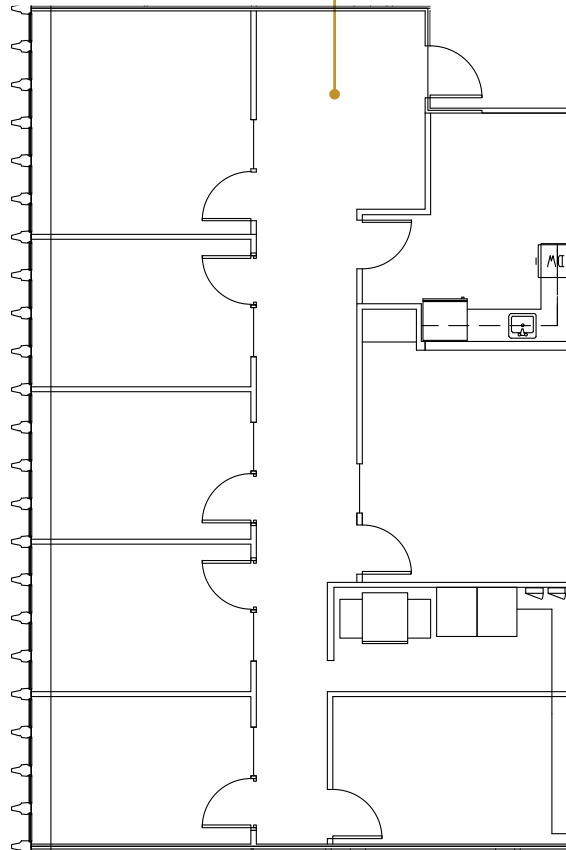
For virtual tour, visit:

<https://bit.ly/3xKKy4R>

## SUITE 1830

## 2,107 RSF

Suite 1830



### SPACE FEATURES

- » Available now!
- » 6 private offices
- » 1 conference room
- » Kitchenette
- » Utility room



**METROTRACT**  
SEATTLE





# 1200 FIFTH

1200 Fifth Avenue  
Seattle, Washington 98101

**Damon McCartney**

(206) 838-7633

mccartney@broderickgroup.com

**David Greenwood**

(206) 838-7635

greenwood@broderickgroup.com



Broderick Group, Inc.  
10500 NE 8th Street, Suite 900  
Bellevue, WA 98004  
main: (206) 838-5775

broderickgroup.com

The information contained herein has been given to us by the owner or sources which we deem reliable. We have no reason to doubt its accuracy, but we do not guarantee it. Prospective tenants should carefully verify all information contained herein.



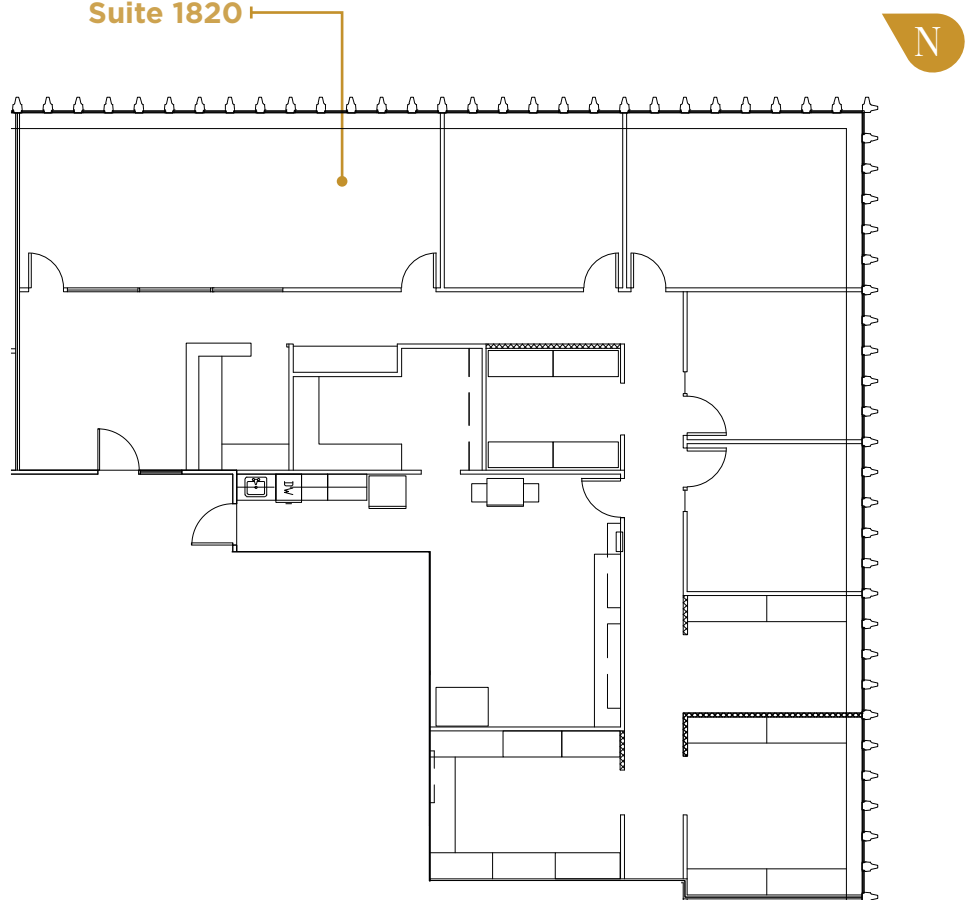
For virtual tour, visit:

[bit.ly/4eXFoTF](https://bit.ly/4eXFoTF)

## SUITE 1820

### 3,718 RSF

Suite 1820



## SPACE FEATURES

- » Available now!
- » 4 private offices
- » 1 conference room
- » Kitchenette
- » Open work area



**METROTRACT**  
SEATTLE



# 1200 FIFTH

1200 Fifth Avenue  
Seattle, Washington 98101

**Damon McCartney**

(206) 838-7633

mccartney@broderickgroup.com

**David Greenwood**

(206) 838-7635

greenwood@broderickgroup.com



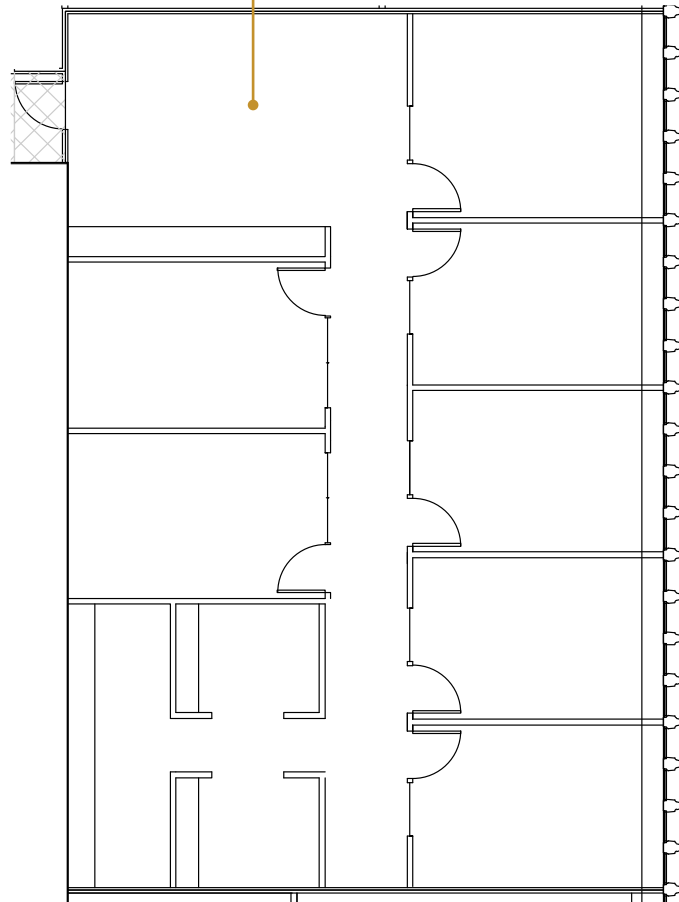
Broderick Group, Inc.  
10500 NE 8th Street, Suite 900  
Bellevue, WA 98004  
main: (206) 838-5775

broderickgroup.com

The information contained herein has been given to us by the owner or sources which we deem reliable. We have no reason to doubt its accuracy, but we do not guarantee it. Prospective tenants should carefully verify all information contained herein.

## SUITE 1750 2,035 RSF

Suite 1750



### SPACE FEATURES

- » Available 5/1/2025
- » Multiple private offices
- » Multiple conference rooms
- » Open work area



**METROTRACT**  
SEATTLE





# 1200 FIFTH

1200 Fifth Avenue  
Seattle, Washington 98101



**Damon McCartney**  
(206) 838-7633  
mccartney@broderickgroup.com

**David Greenwood**  
(206) 838-7635  
greenwood@broderickgroup.com

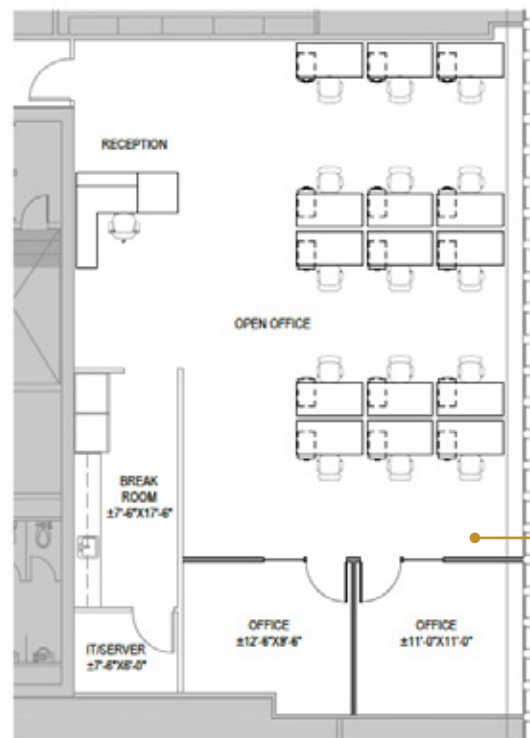


Broderick Group, Inc.  
10500 NE 8th Street, Suite 900  
Bellevue, WA 98004  
main: (206) 838-5775

broderickgroup.com

The information contained herein has been given to us by the owner or sources which we deem reliable. We have no reason to doubt its accuracy, but we do not guarantee it. Prospective tenants should carefully verify all information contained herein.

## SUITE 1565 2,069 RSF



Suite 1565

### SPACE FEATURES

- » Available now!
- » Spec Suite Available Q2 2025



**METROTRACT**  
SEATTLE



# 1200 FIFTH

1200 Fifth Avenue  
Seattle, Washington 98101



**Damon McCartney**

(206) 838-7633

mccartney@broderickgroup.com

**David Greenwood**

(206) 838-7635

greenwood@broderickgroup.com



Broderick Group, Inc.  
10500 NE 8th Street, Suite 900  
Bellevue, WA 98004  
main: (206) 838-5775

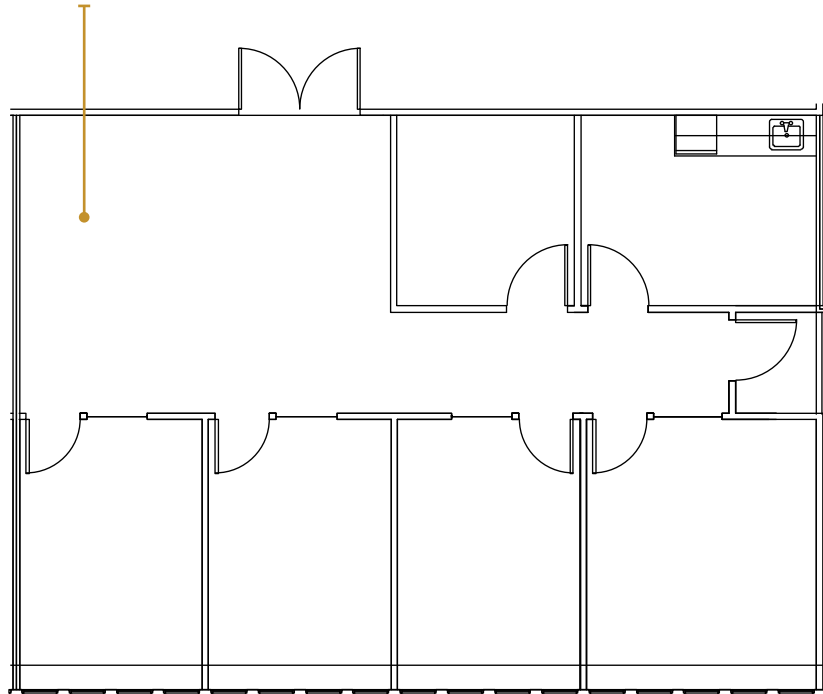
broderickgroup.com

The information contained herein has been given to us by the owner or sources which we deem reliable. We have no reason to doubt its accuracy, but we do not guarantee it. Prospective tenants should carefully verify all information contained herein.

## SUITE 1400 1,685 RSF



Suite 1400



### SPACE FEATURES

- » Available 7/31/2025
- » Multiple offices
- » Conference room
- » Kitchenette



**METROTRACT**  
SEATTLE





# 1200 FIFTH

1200 Fifth Avenue  
Seattle, Washington 98101



**Damon McCartney**

(206) 838-7633

mccartney@broderickgroup.com

**David Greenwood**

(206) 838-7635

greenwood@broderickgroup.com



Broderick Group, Inc.  
10500 NE 8th Street, Suite 900  
Bellevue, WA 98004  
main: (206) 838-5775

broderickgroup.com

The information contained herein has been given to us by the owner or sources which we deem reliable. We have no reason to doubt its accuracy, but we do not guarantee it. Prospective tenants should carefully verify all information contained herein.



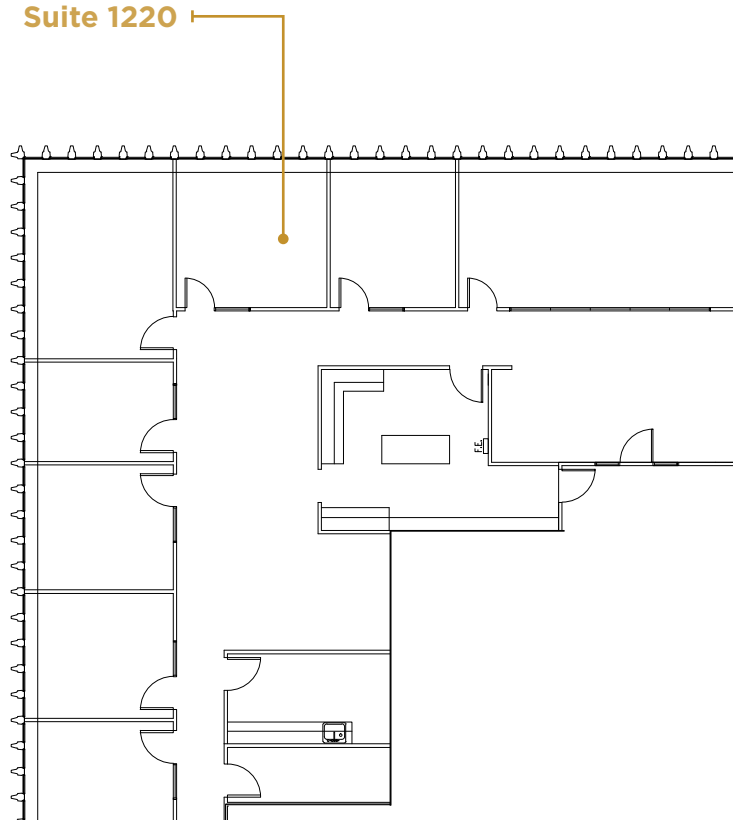
For virtual tour, visit:

[bit.ly/49jx1P1](https://bit.ly/49jx1P1)

## SUITE 1220

### 3,644 RSF

Suite 1220



## SPACE FEATURES

- » Available now!
- » 6 private offices
- » 2 conference rooms
- » Reception area
- » Break area and kitchenette
- » Utility room



**METROTRACT**  
SEATTLE



# 1200 FIFTH

1200 Fifth Avenue  
Seattle, Washington 98101

**Damon McCartney**  
(206) 838-7633  
mccartney@broderickgroup.com

**David Greenwood**  
(206) 838-7635  
greenwood@broderickgroup.com



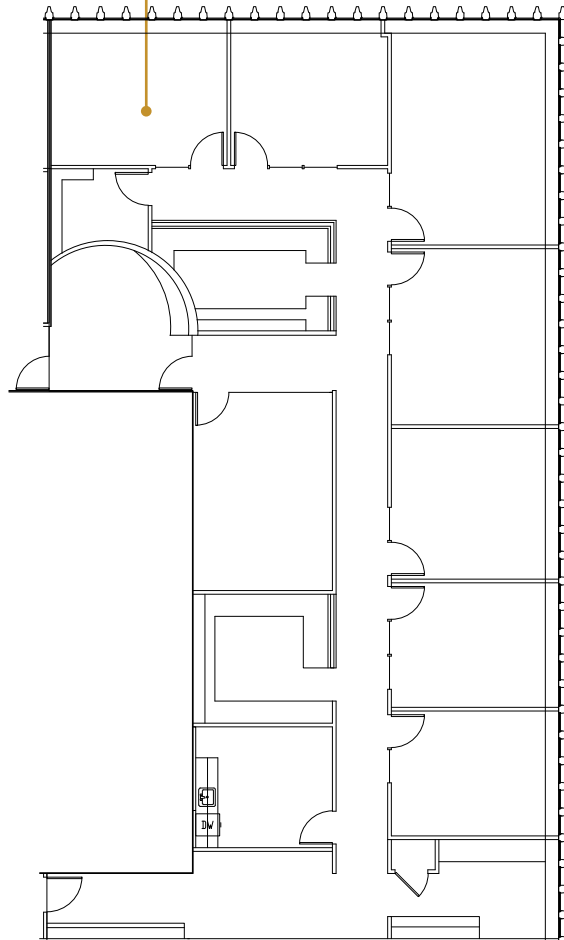
Broderick Group, Inc.  
10500 NE 8th Street, Suite 900  
Bellevue, WA 98004  
main: (206) 838-5775

broderickgroup.com

The information contained herein has been given to us by the owner or sources which we deem reliable. We have no reason to doubt its accuracy, but we do not guarantee it. Prospective tenants should carefully verify all information contained herein.

## SUITE 1217 4,177 RSF

Suite 1217



### SPACE FEATURES

- » Available now!
- » 6 private offices
- » 2 conference rooms
- » Reception area
- » Break area and kitchenette
- » Utility room



**METROTRACT**  
SEATTLE





# 1200 FIFTH

1200 Fifth Avenue  
Seattle, Washington 98101



**Damon McCartney**

(206) 838-7633

mccartney@broderickgroup.com

**David Greenwood**

(206) 838-7635

greenwood@broderickgroup.com



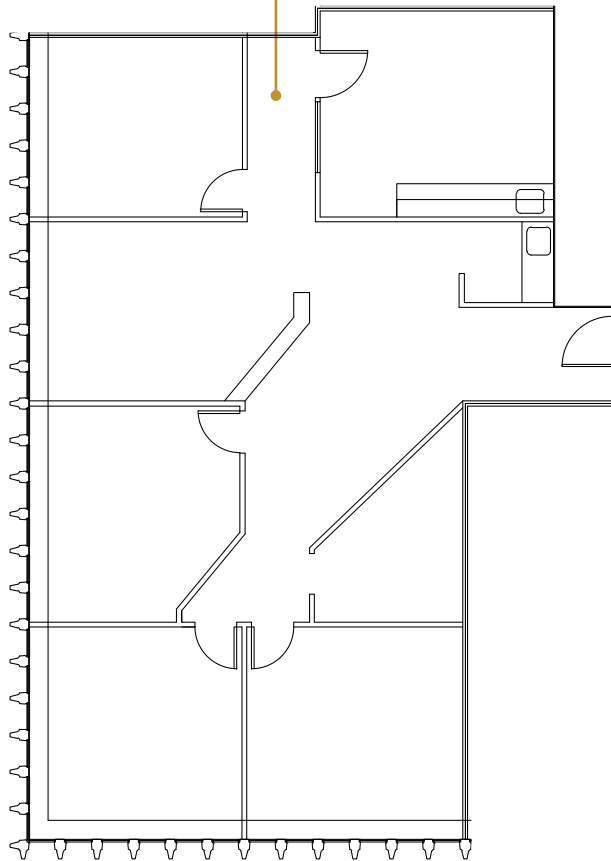
Broderick Group, Inc.  
10500 NE 8th Street, Suite 900  
Bellevue, WA 98004  
main: (206) 838-5775

broderickgroup.com

The information contained herein has been given to us  
by the owner or sources which we deem reliable.  
We have no reason to doubt its accuracy, but we do not  
guarantee it. Prospective tenants should carefully verify  
all information contained herein.

## SUITE 1200 1,977 RSF

Suite 1220



N

### SPACE FEATURES

- » Available now!
- » Multiple private offices
- » Multiple conference rooms
- » Break area and kitchenette



**METROTRACT**  
SEATTLE



# 1200 FIFTH

1200 Fifth Avenue  
Seattle, Washington 98101

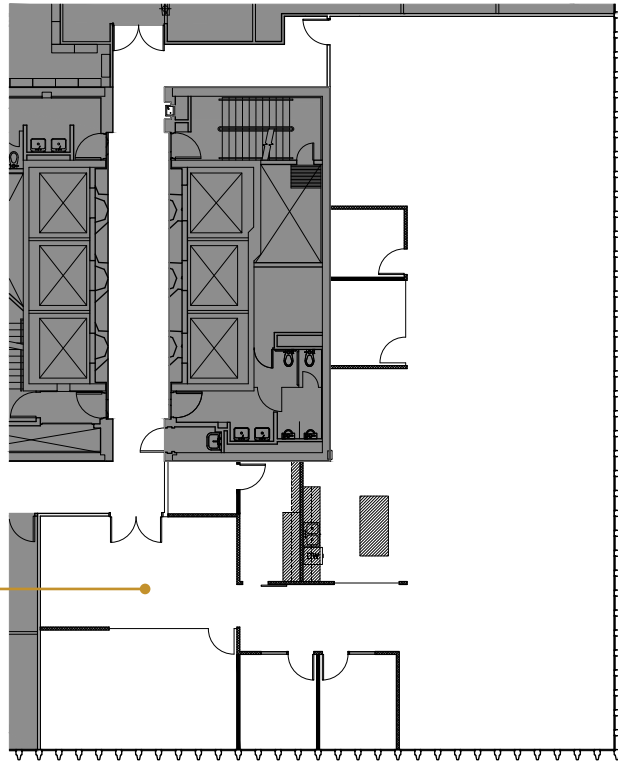


For virtual tour, visit:  
[bit.ly/3YXuUuT](https://bit.ly/3YXuUuT)

SUITE 1100  
4,915 RSF

N

Suite 1100



## SPACE FEATURES

- » Available now!
- » New Spec Suite
- » Open work area
- » 1 conference room
- » 4 private offices
- » Break area and kitchenette
- » Reception area



METROTRACT  
SEATTLE

**Damon McCartney**

(206) 838-7633

[mccartney@broderickgroup.com](mailto:mccartney@broderickgroup.com)

**David Greenwood**

(206) 838-7635

[greenwood@broderickgroup.com](mailto:greenwood@broderickgroup.com)



Broderick Group, Inc.  
10500 NE 8th Street, Suite 900  
Bellevue, WA 98004  
main: (206) 838-5775

[broderickgroup.com](http://broderickgroup.com)

The information contained herein has been given to us by the owner or sources which we deem reliable. We have no reason to doubt its accuracy, but we do not guarantee it. Prospective tenants should carefully verify all information contained herein.





# 1200 FIFTH

1200 Fifth Avenue  
Seattle, Washington 98101



**Damon McCartney**

(206) 838-7633

mccartney@broderickgroup.com

**David Greenwood**

(206) 838-7635

greenwood@broderickgroup.com

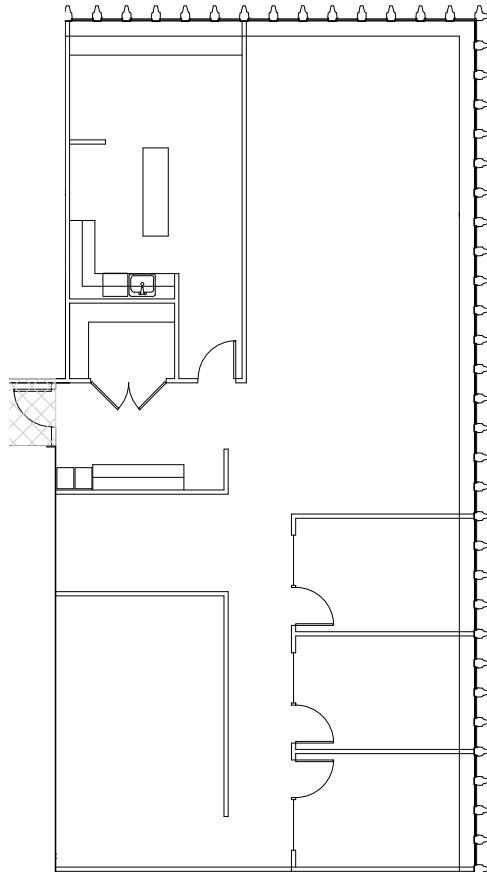


Broderick Group, Inc.  
10500 NE 8th Street, Suite 900  
Bellevue, WA 98004  
main: (206) 838-5775

broderickgroup.com

The information contained herein has been given to us by the owner or sources which we deem reliable. We have no reason to doubt its accuracy, but we do not guarantee it. Prospective tenants should carefully verify all information contained herein.

## SUITE 720 2,884 RSF



### SPACE FEATURES

- » Available now!
- » Open work area
- » 3 private offices
- » Break area and kitchenette



**METROTRACT**  
SEATTLE



# 1200 FIFTH

1200 Fifth Avenue  
Seattle, Washington 98101



**Damon McCartney**

(206) 838-7633

mccartney@broderickgroup.com

**David Greenwood**

(206) 838-7635

greenwood@broderickgroup.com

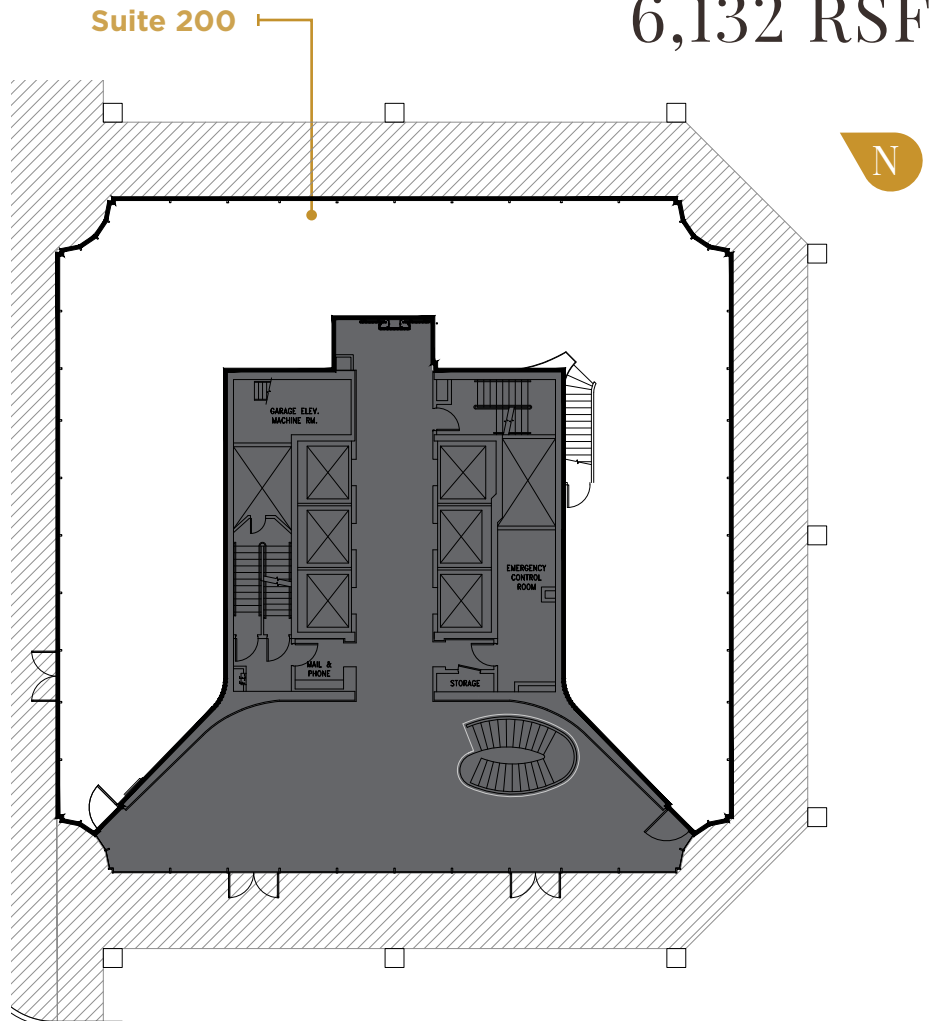


Broderick Group, Inc.  
10500 NE 8th Street, Suite 900  
Bellevue, WA 98004  
main: (206) 838-5775

broderickgroup.com

The information contained herein has been given to us  
by the owner or sources which we deem reliable.  
We have no reason to doubt its accuracy, but we do not  
guarantee it. Prospective tenants should carefully verify  
all information contained herein.

## SUITE 200 6,132 RSF



### SPACE FEATURES

- » Available now!
- » Cold shell condition



**METROTRACT**  
SEATTLE



METROTRACT

SEATTLE

**BRODERICK**  
• GROUP •

Broderick Group, Inc.  
10500 NE 8th Street, Suite 900  
Bellevue, WA 98004  
main: (206) 838-5775

[broderickgroup.com](http://broderickgroup.com)

**Damon McCartney**

(206) 838-7633

[mccartney@broderickgroup.com](mailto:mccartney@broderickgroup.com)

**David Greenwood**

(206) 838-7635

[greenwood@broderickgroup.com](mailto:greenwood@broderickgroup.com)