

1633

WESTLAKE

1633 WESTLAKE AVE N | SEATTLE, WA

BRODERICK
• GROUP •



LEASING CONTACTS

DAMON MCCARTNEY

206.838.7633

mccartney@broderickgroup.com

DAVID GREENWOOD

206.512.7386

greenwood@broderickgroup.com









EASY ACCESS TO:

- Lake Union Loop/Burke Gilman Bike Trails
- MOHAI Park
- Kenmore Air Terminal
- Easy I-5, HWY 99 and SLU access
- Lake Union access for sailing, boating, kayaking and paddle boards
- Marriott Hotel and multiple apartment/condos
- 200+ parking spots



AVAILABILITIES

FLOOR	SUITE	RSF	AVAILABILITY
RETAIL	B	1,126 RSF	NOW
1	<u>100</u> 	8,255 RSF	NOW
1	<u>110</u> 	4,365 RSF	NOW
1	<u>120</u> 	5,096 RSF	NOW
1	<u>140</u> 	3,624 RSF	NOW
2	<u>200</u> 	25,754 RSF	NOW
4	<u>400</u> 	22,323 RSF	NOW

The information contained herein has been given to us by the owner or sources which we deem reliable. We have no reason to doubt its accuracy, but we do not guarantee it. Prospective tenants should carefully verify all information contained herein.

1633 WESTLAKE



LEASING CONTACTS

DAMON MCCARTNEY

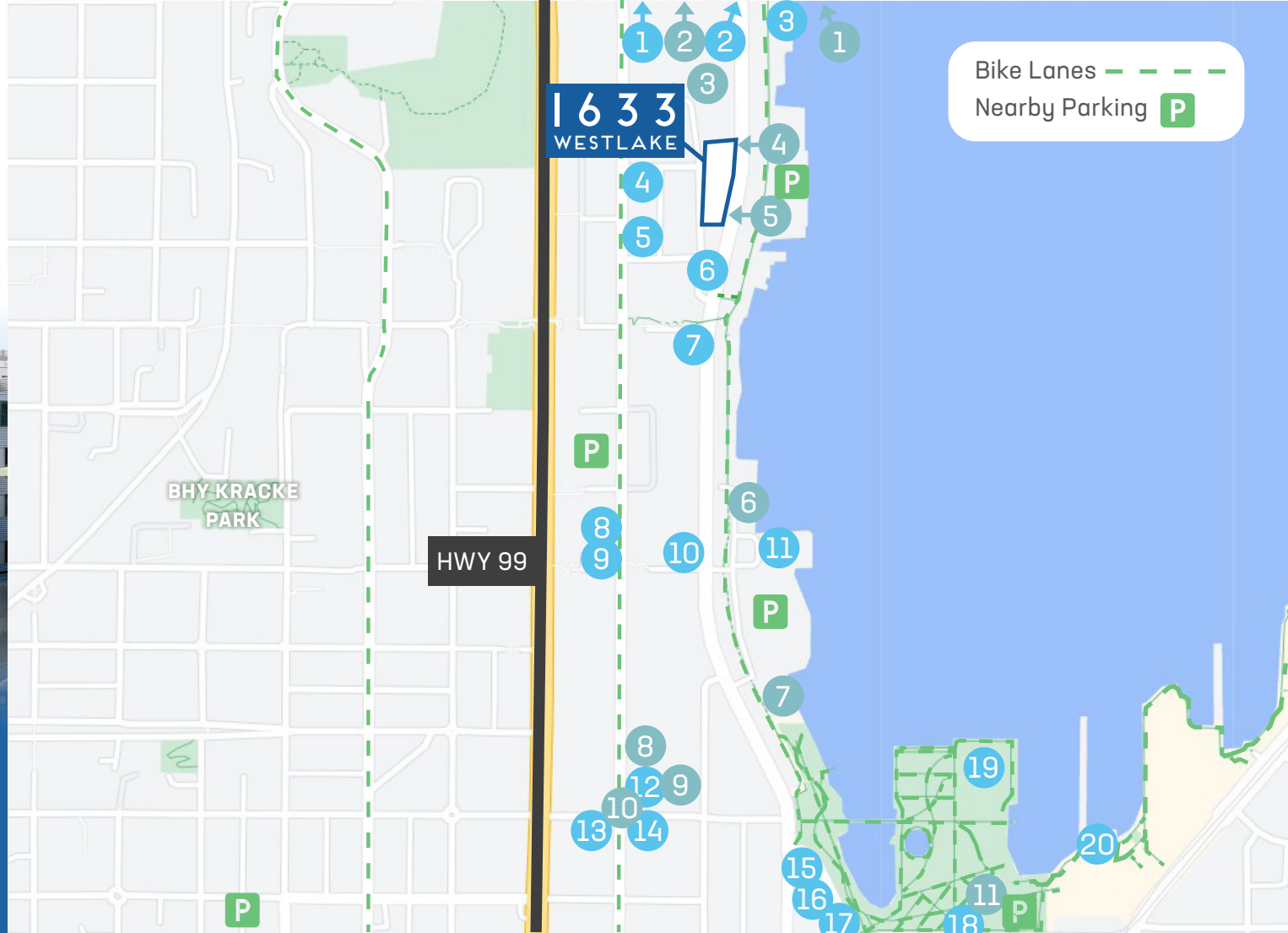
206.838.7633

mccartney@broderickgroup.com

DAVID GREENWOOD

206.512.7386

greenwood@broderickgroup.com



AMENITIES

FOOD / DRINKS

- | | | |
|-----------------------------|-----------------------------|---------------------------------|
| 1. Lyon's Grocery | 8. Gyro & More | 15. Art Marble 21 |
| 2. China Harbor Restaurant | 9. Koibito Sushi & Teriyaki | 16. Maria Sabina |
| 3. Boathouse Deli | 10. Caffe Umbria | 17. Buca di Beppo |
| 4. The Toledo | 11. Starbucks | 18. Tapster |
| 5. Tea King | 12. Stone Korean | 19. Gourmondo at MOHAI |
| 6. MotherIndia Cuisine | 13. Tanoor Seattle | 20. Daniel's Broiler |
| 7. Metropolitan Deli & Cafe | 14. Tacos Chukis | 21. The White Swan Public House |

LIFESTYLE

- | | |
|------------------------------|---------------------------------------|
| 1. The Electric Boat Company | 8. Refine Nails & Spa |
| 2. Swedish Club | 9. Pro Fit Gym |
| 3. Kari Gran | 10. Dexter Dry Cleaners |
| 4. Union Bay Clothing | 11. Center for Wooden Boats |
| 5. Modern Barber | 12. Moss Bay Rowing & Kayaking Center |
| 6. Freedom Boat Club | |
| 7. Kenmore Air | |

1633
WESTLAKE



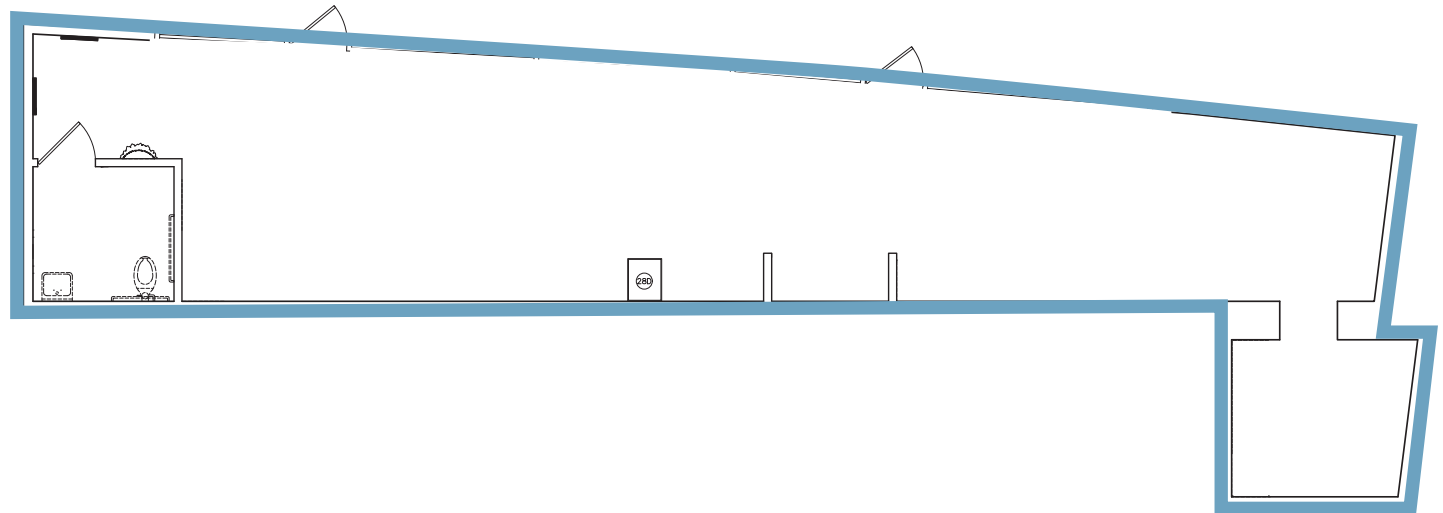
SUITE B - RETAIL

1,126 RSF



Suite Details

- + Available now
- + Open area for workstations



LEASING CONTACTS

DAMON MCCARTNEY

206.838.7633

mccartney@broderickgroup.com

DAVID GREENWOOD

206.512.7386

greenwood@broderickgroup.com

BRODERICK
• GROUP •

BACK TO AVAILABLE SPACE



1633
WESTLAKE



FLOOR 1 - SUITE 100

8,255 RSF

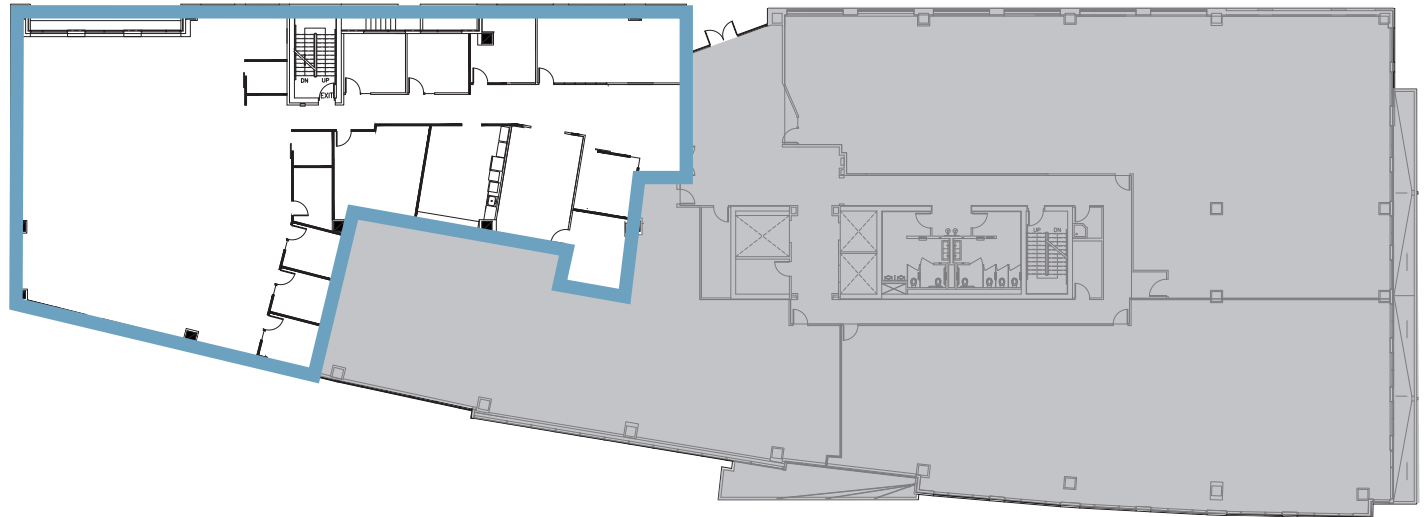


Suite Details

- + Available now
- + Open area for workstations
- + Furniture can be made available
- + *Can be combined with Suite 110 for 12,620 RSF*



[VIEW VIRTUAL TOUR](#)



LEASING CONTACTS

DAMON MCCARTNEY

206.838.7633

mccartney@broderickgroup.com

DAVID GREENWOOD

206.512.7386

greenwood@broderickgroup.com

BRODERICK
• GROUP •

[BACK TO AVAILABLE SPACE](#)





FLOOR 1 - SUITE 110

4,365 RSF

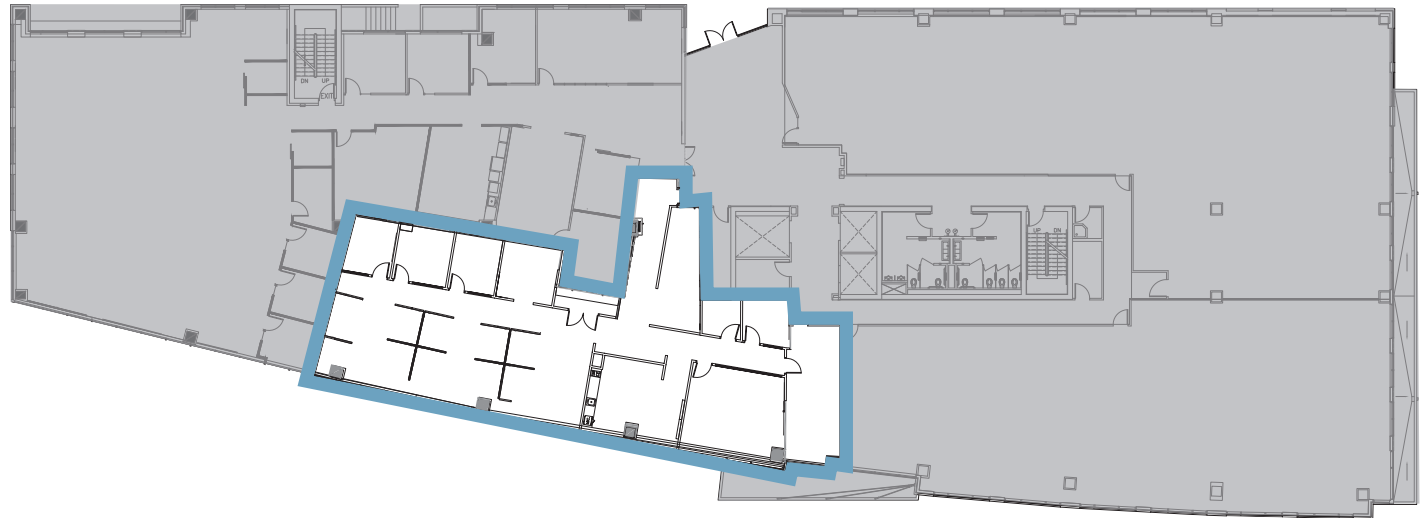


Suite Details

- + Available now
- + Open area for workstations
- + Furniture can be made available
- + *Can be combined with Suite 100 for 12,620 RSF*



VIEW VIRTUAL TOUR



LEASING CONTACTS

DAMON MCCARTNEY

206.838.7633

mccartney@broderickgroup.com

DAVID GREENWOOD

206.512.7386

greenwood@broderickgroup.com



BACK TO AVAILABLE SPACE

1633
WESTLAKE



FLOOR 1 - SUITE 120

5,096 RSF



Suite Details

- + Available now
- + Open area for workstations
- + Furniture can be made available



[VIEW VIRTUAL TOUR](#)



LEASING CONTACTS

DAMON MCCARTNEY

206.838.7633

mccartney@broderickgroup.com

DAVID GREENWOOD

206.512.7386

greenwood@broderickgroup.com

BRODERICK
• GROUP •

[BACK TO AVAILABLE SPACE](#)



1633
WESTLAKE



FLOOR 1 - SUITE 140

3,624 RSF

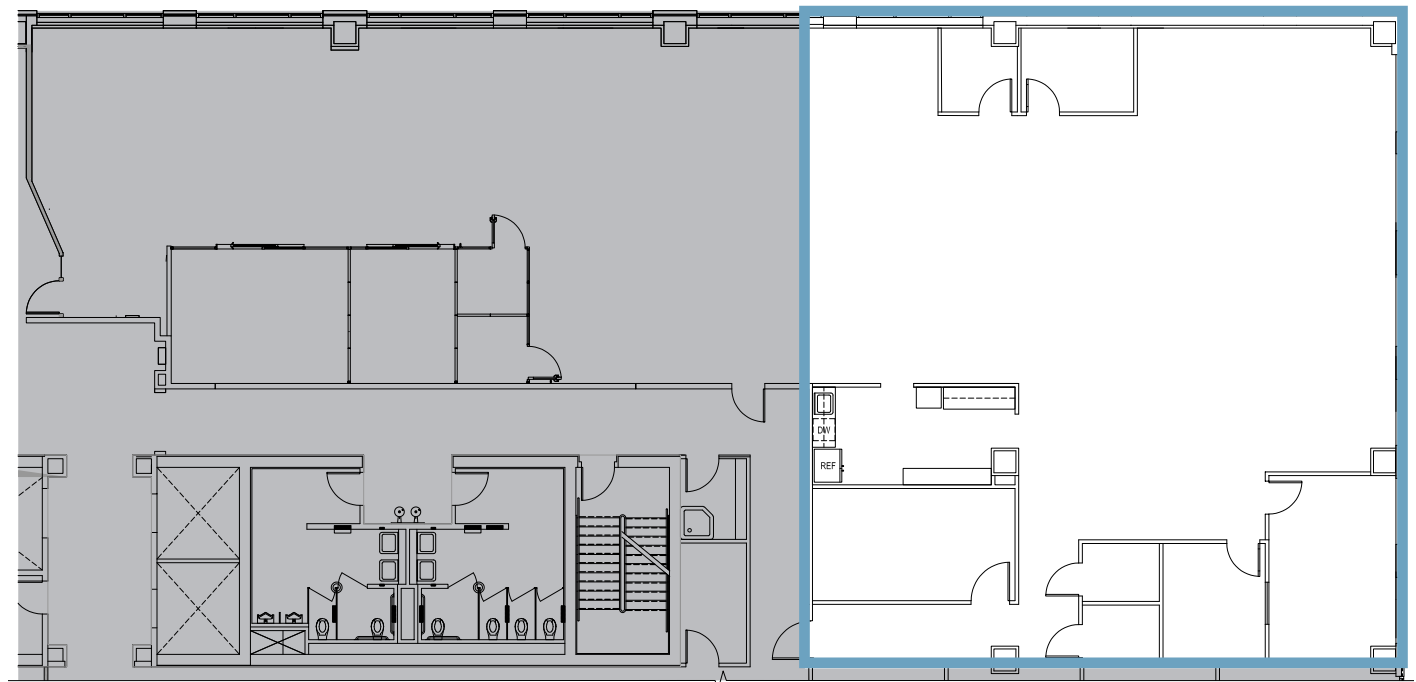


Suite Details

- + Available now
- + Open area for workstations



[VIEW VIRTUAL TOUR](#)



LEASING CONTACTS

DAMON MCCARTNEY

206.838.7633

mccartney@broderickgroup.com

DAVID GREENWOOD

206.512.7386

greenwood@broderickgroup.com

BRODERICK
• GROUP •

[BACK TO AVAILABLE SPACE](#)



1633
WESTLAKE



FLOOR 2

25,754 RSF

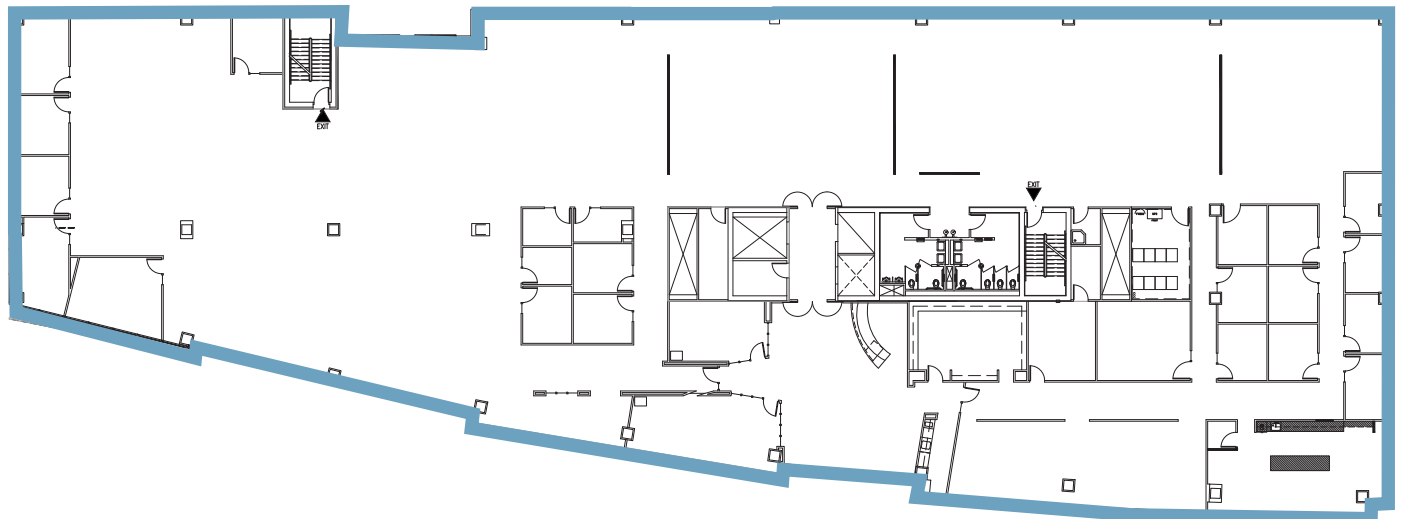


Suite Details

- + Available now
- + Open work area for workstations
- + 18 private offices
- + Small & large conference rooms
- + Storage room



[VIEW VIRTUAL TOUR](#)



LEASING CONTACTS

DAMON MCCARTNEY

206.838.7633

mccartney@broderickgroup.com

DAVID GREENWOOD

206.512.7386

greenwood@broderickgroup.com

BRODERICK
• GROUP •

[BACK TO AVAILABLE SPACE](#)



1633
WESTLAKE



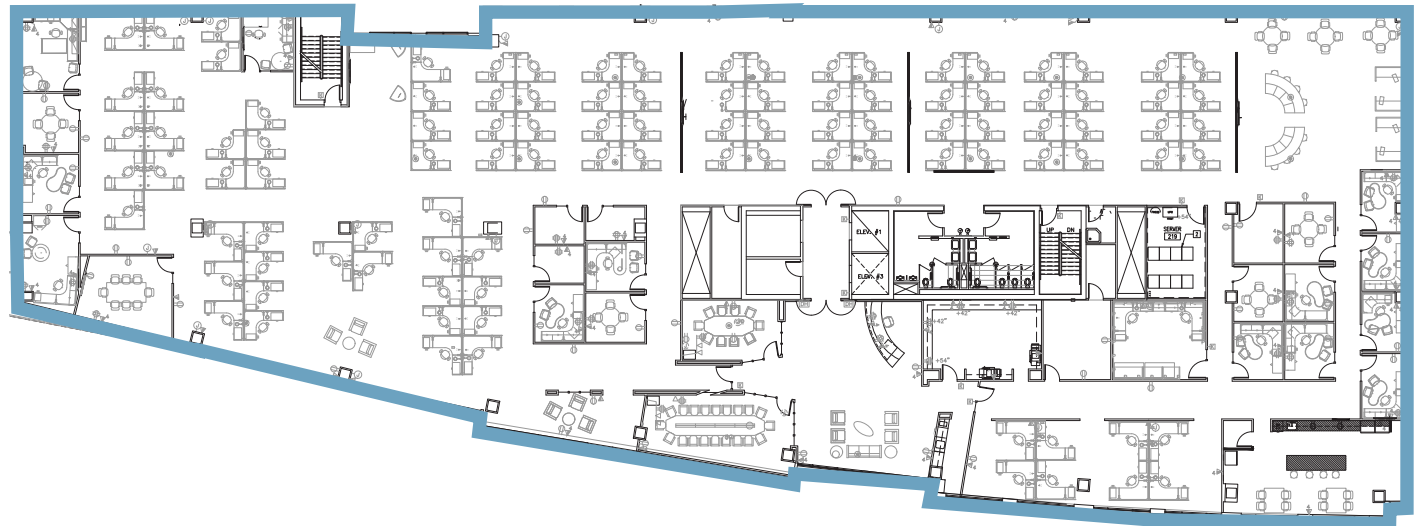
FLOOR 2

25,754 RSF - CONCEPTUAL PLAN



Suite Details

- + Available now
- + 18 private offices
- + Storage room
- + Open work area for workstations
- + Small & large conference rooms



LEASING CONTACTS

DAMON MCCARTNEY

206.838.7633

mccartney@broderickgroup.com

DAVID GREENWOOD

206.512.7386

greenwood@broderickgroup.com

BRODERICK
• GROUP •

[BACK TO AVAILABLE SPACE](#)



1633
WESTLAKE



FLOOR 4

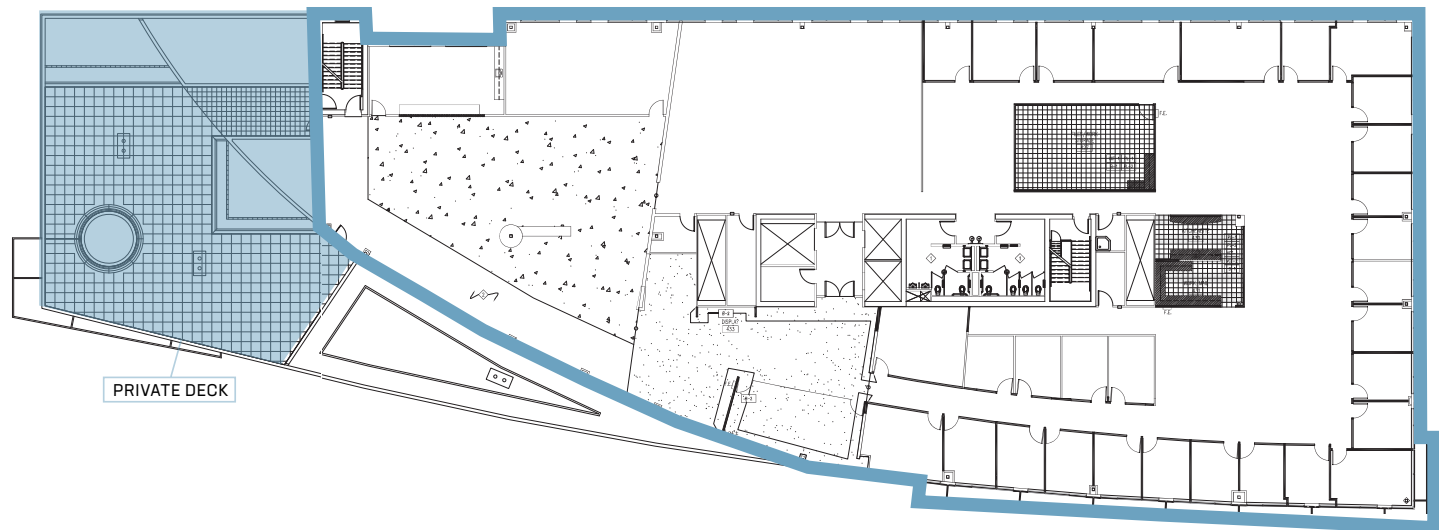
22,323 RSF



Suite Details

- + Available now
- + Private rooftop
- + Lake Washington views
- + 27 private offices
- + Three conference rooms
- + Kitchenette
- + Open area for workstations
- + Reception area
- + Storage room

 [VIEW VIRTUAL TOUR](#)



LEASING CONTACTS

DAMON MCCARTNEY

206.838.7633

mccartney@broderickgroup.com

DAVID GREENWOOD

206.512.7386

greenwood@broderickgroup.com

BRODERICK
• GROUP •

[BACK TO AVAILABLE SPACE](#)

