

FIRST LIGHT

2000 3rd Ave
Seattle, Washington

BRODERICK
• GROUP •



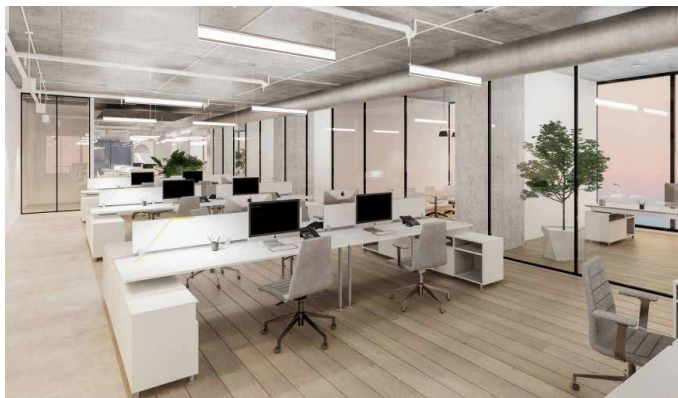
westbank

F I R S T
L I G H T

Collaboration space that
will inspire your team to
come together and create



FIRST LIGHT



Property Details

Office Area:

114,740 SF

Typical Floorplate Size:

19,871 SF

Slab to Slab Height:

Levels 2-5: 12'-3"

Level 6: 13'-8"

Level 7: 12'-4"

Parking:

0.68 Stalls/1,000 SF

FIRST LIGHT



**Inspiring,
sustainable
collaboration
space**

F I R S T L I G H T



Amenities

Westbank Cycle Club

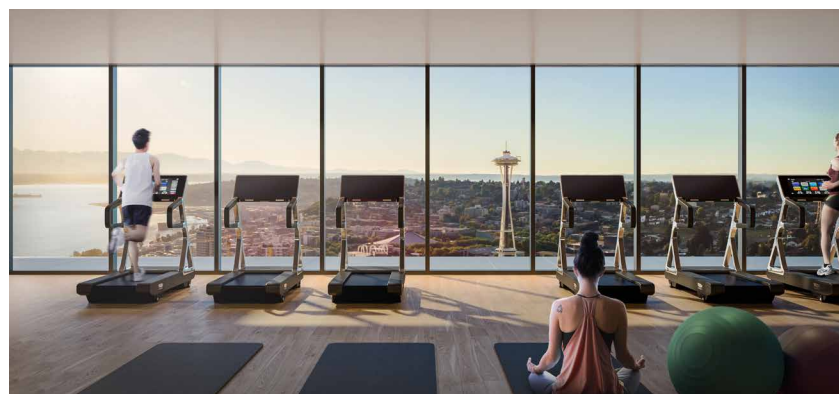
Westbank Cycle Club e-bike share program and amenity lounge for workspace tenants

The Orchard

Level 7 outdoor amenity space for individual and group meetings under an orchard

Sky Pool / Wellness Center

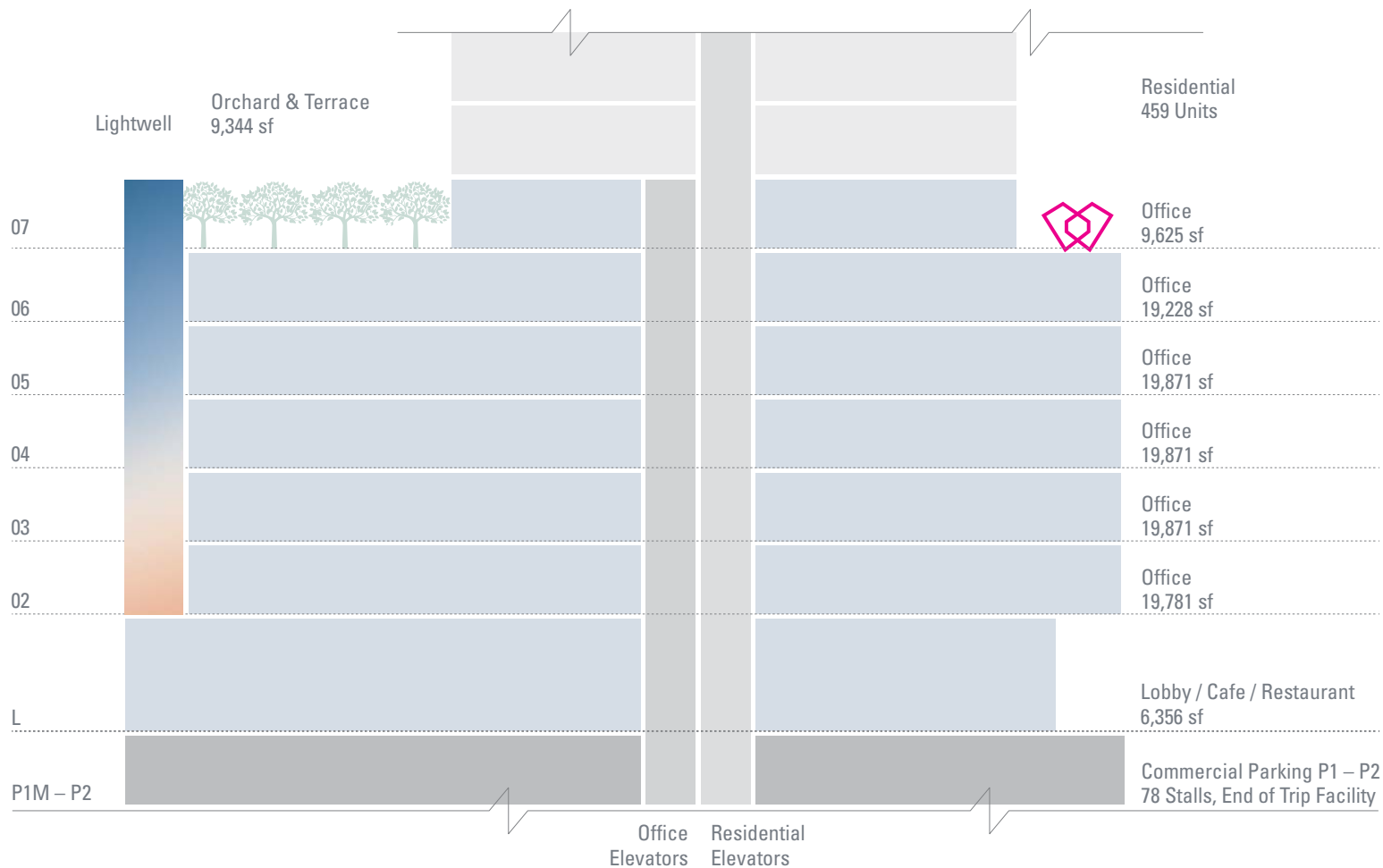
Active recreation of the lap and spa pool areas, with the entire floor below devoted to the aerobic and weights room



FIRST LIGHT



Stacking Plan



DAMON MCCARTNEY

206-354-4878

mccartney@broderickgroup.com

DAVID GREENWOOD

206-512-7386

greenwood@broderickgroup.com

The information contained herein has been given to us by the owner or sources which we deem reliable. We have no reason to doubt its accuracy, but we do not guarantee it. Prospective tenants should carefully verify all information contained herein.

F I R S T
L I G H T

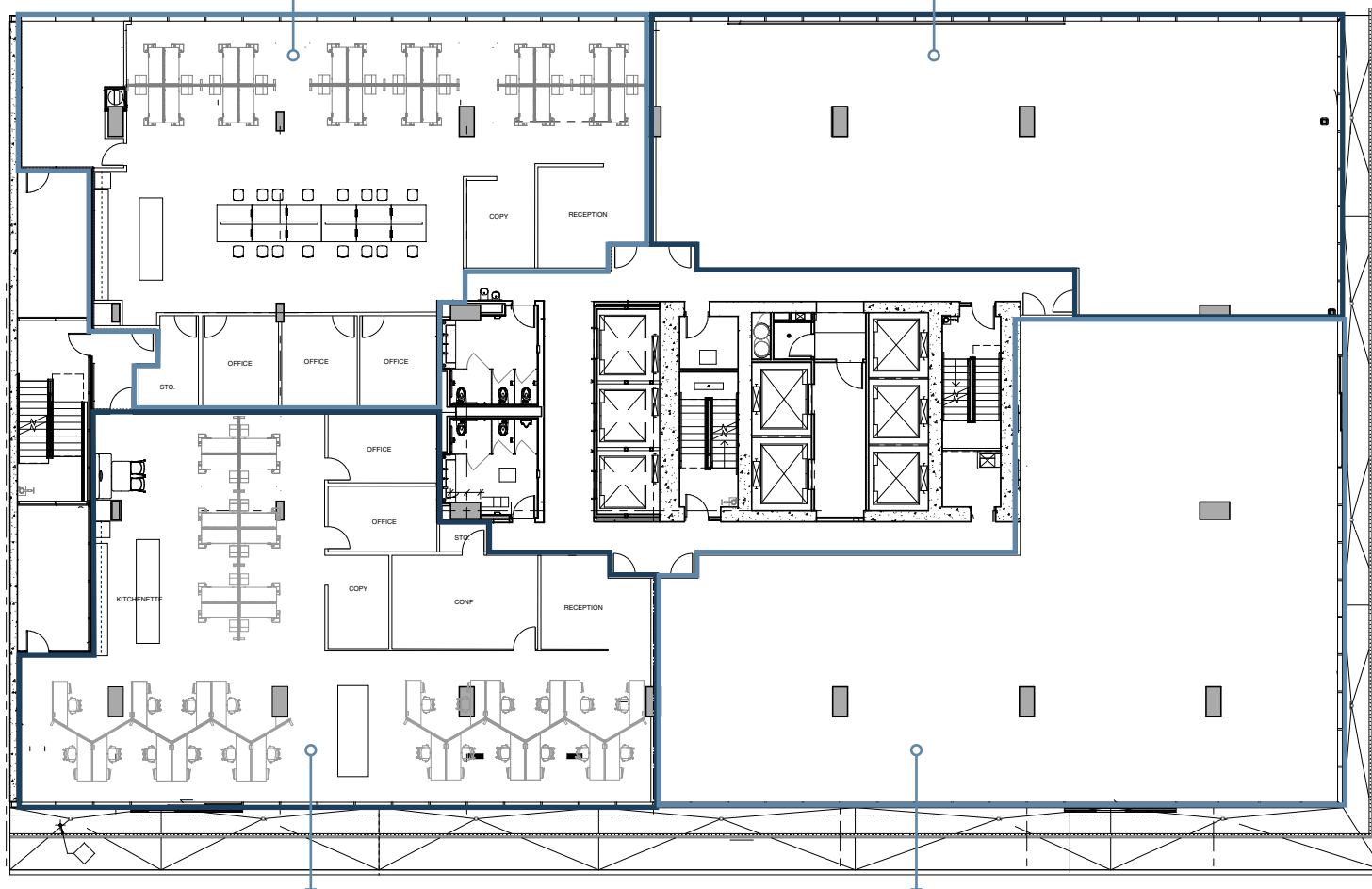


Spec Suite 201 D
4,657 RSF

Suite 201 C
4,388 RSF

Demised Suites | Level 2

Available Now



Spec Suite 201 A
4,778 RSF

Suite 201 B
5,877 RSF



DAMON MCCARTNEY

206-354-4878

mccartney@broderickgroup.com

DAVID GREENWOOD

206-512-7386

greenwood@broderickgroup.com

The information contained herein has been given to us by the owner or sources which we deem reliable. We have no reason to doubt its accuracy, but we do not guarantee it. Prospective tenants should carefully verify all information contained herein.

F I R S T
L I G H T



Test Fit 1 | Levels 3 - 5

Traditional Office Layout

19,871 SF/Person
108 Workstations
16 Private Offices
4 Private Conference Rooms
13 Collaboration Spaces
3 Offices



DAMON MCCARTNEY

206-354-4878

mccartney@broderickgroup.com

DAVID GREENWOOD

206-512-7386

greenwood@broderickgroup.com

The information contained herein has been given to us by the owner or sources which we deem reliable. We have no reason to doubt its accuracy, but we do not guarantee it. Prospective tenants should carefully verify all information contained herein.

FIRST LIGHT



Test Fit 2 | Levels 3 - 5

Traditional Office Layout

19,871 SF/Person

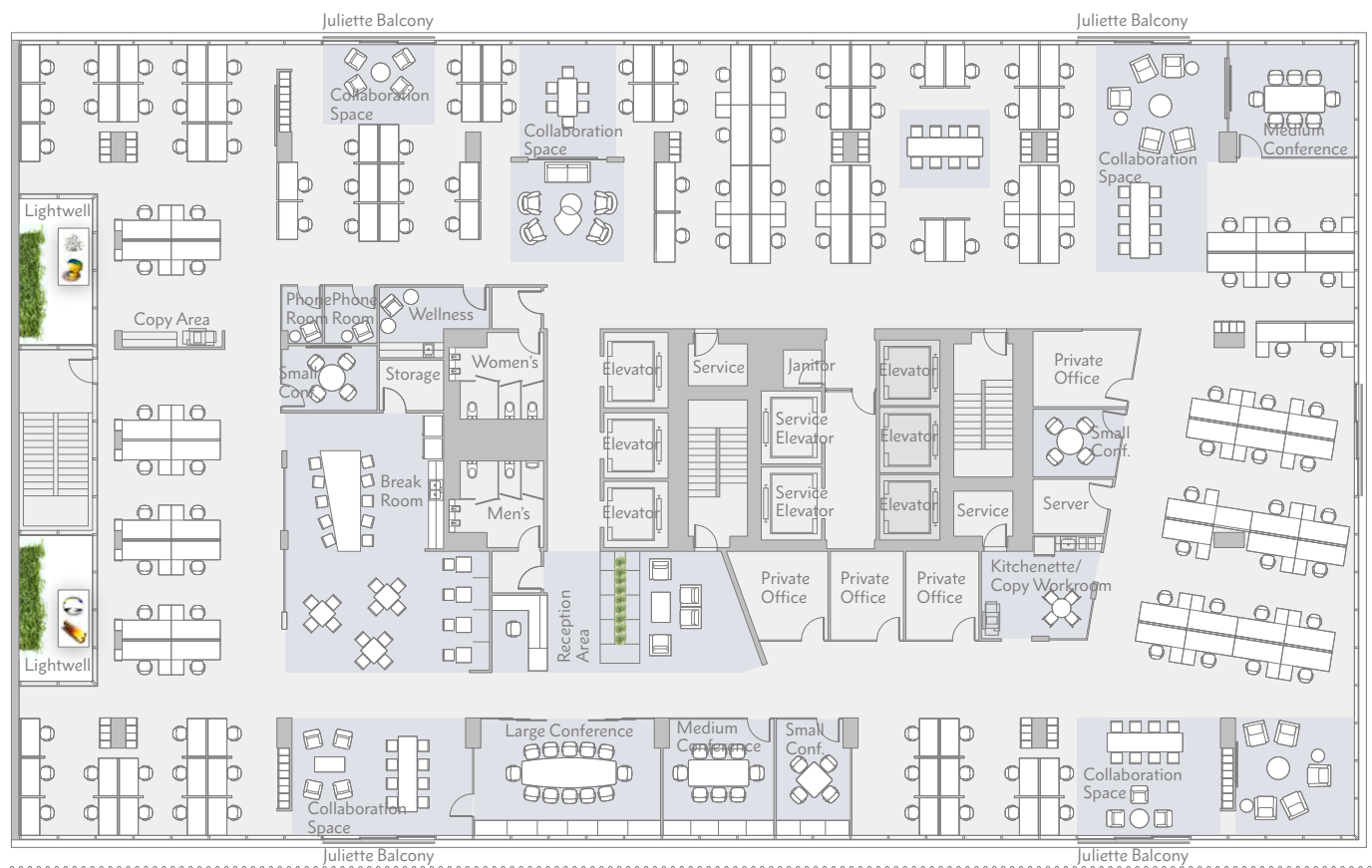
128 Workstations

4 Private Offices

6 Private Conference Rooms

8 Collaboration Spaces

3 Office Elevators



Virginia Street
↑

3rd Avenue
↔



DAMON MCCARTNEY

206-354-4878

mccartney@broderickgroup.com

DAVID GREENWOOD

206-512-7386

greenwood@broderickgroup.com

The information contained herein has been given to us by the owner or sources which we deem reliable. We have no reason to doubt its accuracy, but we do not guarantee it. Prospective tenants should carefully verify all information contained herein.

Nearby Amenities

Restaurants

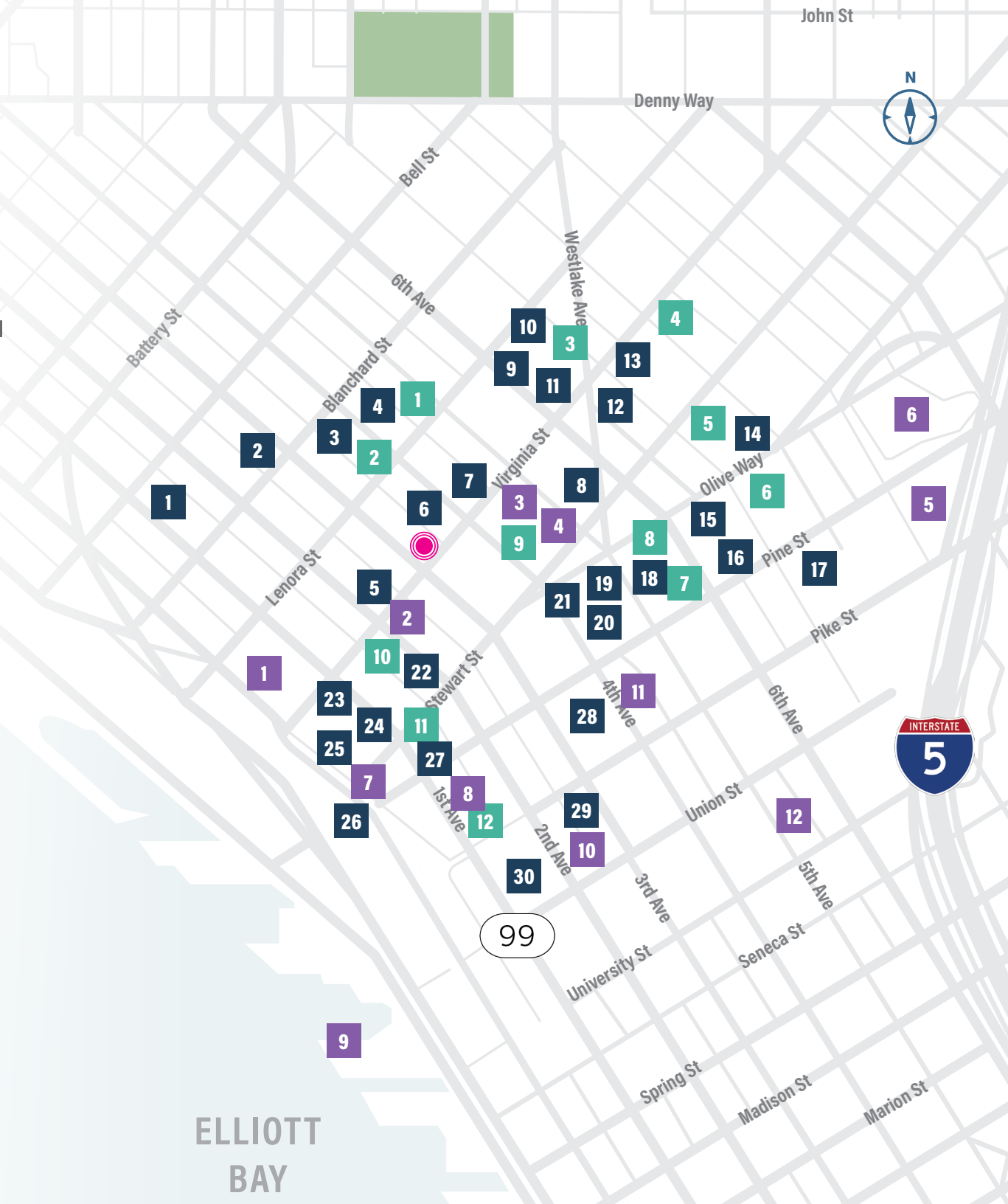
1. Umi Sake House
2. FOB Poke Bar
3. FOB Sushi Bar
4. Currant Bistro
5. Shaker + Spear
6. Serious Pie
7. Lola
8. Relish Bistro
9. Skillet Counter
10. Great State Burger
11. Marination
12. Petra Cafe
13. Seoul Bowl
14. Mr West Cafe
15. Pike Place Chowder
16. Din Tai Fung
17. Ruth's Chris
18. Nordstrom Grill
19. Xi'an Noodles
20. Asean Streat Food Hall
21. Andaluca
22. Ludi's
23. Le Pichet
24. Kells Irish Pub
25. The Pink Door
26. Old Stove Brewing Co
27. Verve Bowls
28. Yard House
29. Wild Ginger
30. Japonessa

Coffee

1. Herkimer Coffee
2. Coffee TAB
3. Starbucks
4. Fonte Coffee
5. Starbucks
6. Anchorhead Coffee
7. Nordstrom Ebar
8. Cherry Street Coffee
9. Urban Coffee House
10. Moore Coffee Shop
11. Artly Coffee
12. Storyville Coffee

Lifestyle

1. Seattle Athletic Club
2. Moore Theatre
3. RowdyBox
4. Urban Yoga Spa
5. Paramount Theatre
6. WA Convention Center
7. Pike Place Market
8. The Showbox
9. Seattle Great Wheel
10. Benaroya Hall
11. Westlake Park
12. 5th Ave Theatre



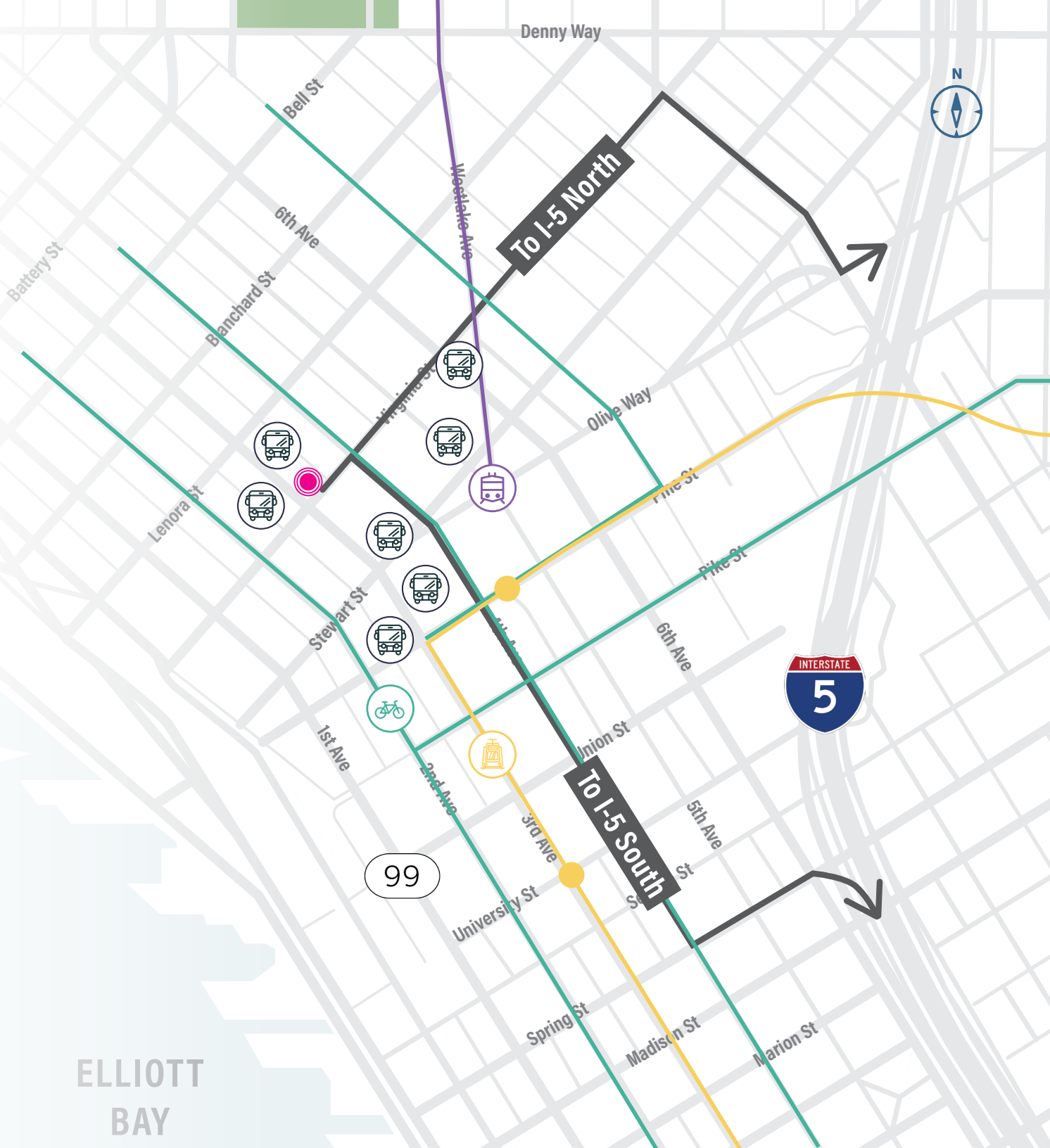
Transit Map

-  Link Light Rail
-  SLU Street Car
-  Sound Transit Stop
-  Bike Path

5 MINUTES
to I-5 North & South

15 MINUTES
to Downtown Bellevue

15 MINUTES
to Seatac Airport



FIRST LIGHT

DAMON MCCARTNEY

206-354-4878

mccartney@broderickgroup.com

DAVID GREENWOOD

206-512-7386

greenwood@broderickgroup.com

BRODERICK
• GROUP •