

PAINE FIELD

BUSINESS PARK

2615 WEST CASINO ROAD
EVERETT, WASHINGTON 98204

SUITE 4 H

AVAILABLE WITH 30 DAYS' NOTICE

TOTAL SF: 2,134 RSF

OFFICE SF: 924 RSF

WAREHOUSE SF: 1,210 RSF

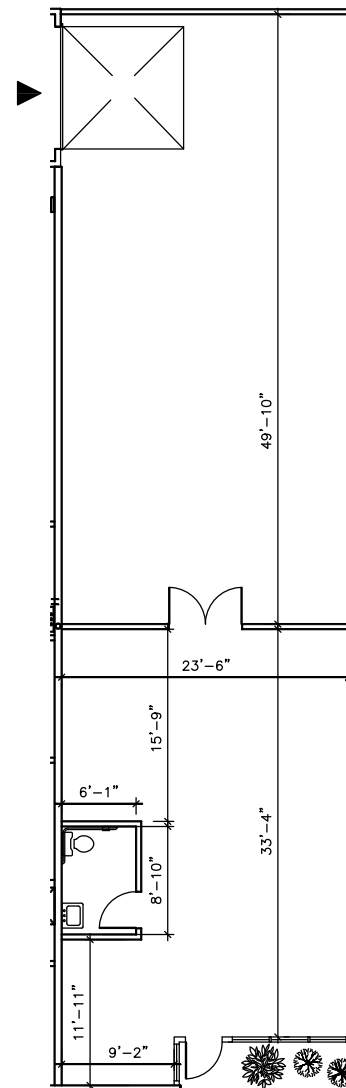
BASE RENT: \$2,881

NNN: \$810

GROSS RENT: \$3,692

The information contained herein has been given to us by the owner or sources that we deem reliable. We have no reason to doubt its accuracy, but we do not guarantee it. Prospective tenants should carefully verify all information contained herein.

 [BACK TO AVAILABLE SPACE](#)



BRODERICK
GROUP

CONNOR GILCHRIST
425.274.4286
gilchrist@broderickgroup.com

RAWLEY HOLMBERG
425.274.4284
holmberg@broderickgroup.com

SAMSON TORO
425.274.4289
toro@broderickgroup.com

OWNED AND MANAGED BY:


Schnitzer
PROPERTIES