

10655 NE 4<sup>TH</sup> STREET  
BELLEVUE, WA

# KEY BANK BUILDING

**EFANA**  
GROUP OF COMPANIES

**BRODERICK**  
• GROUP •





## BUILDING FEATURES & AMENITIES



Parking ratio up to 3.9/1,000 SF



Office suites ideal for small to mid-size tenants



On-site property management office and tenant conference room



Excellent proximity and easy access to I-90, I-405 and the 520 Bridge



Great proximity to restaurants, hotels and shopping, including Bellevue Square and The Bellevue Connection

## BUILDING HIGHLIGHTS

- Rare, nine-story office building located in the heart of Downtown Bellevue
- On-site property management and small floor plates make it an ideal choice for small to mid-sized tenants
- Abundant 3.9/1,000 SF parking ratio is unmatched in Downtown Bellevue



Key Bank Building has been recognized by the U.S. Government Protection Agency as a top performing commercial building based on its effective energy management practices and innovative efficiency solutions.




**NOW OPEN**

**Fully Renovated Plaza  
& Surface Parking Lot**





## CURRENT AVAILABILITIES

VIRTUAL TOUR	SUITE	SQUARE FEET	STARTING RATE	DESCRIPTION / FEATURES	AVAILABLE
	<u>910</u>	3,860 RSF	\$54.00 / SF, Full Service	Five (5) private offices, large conference room, large open work area, storage room, server room, kitchenette and work room.	Now
	<u>704</u>	1,645	\$54.00 / SF, Full Service	Reception area, three (3) private offices, large conference room, open work area and work room.	1/1/2026
	<u>400</u>	11,518 RSF	\$54.00 / SF, Full Service	Full floor, six (6) private offices, large conference rooms, open area for workstations, kitchen and reception area. Furniture can be included.	Now
	<u>L-101</u>	1,565 RSF	\$54.00 / SF, Full Service	Large open work area with high ceilings, server room and private restroom.	Now

## KEY BANK BUILDING

10655 NE 4<sup>TH</sup> STREET • BELLEVUE, WA

For further information please contact  
exclusive leasing agents:

**COLIN TANIGAWA**

425.274.4283

tanigawa@broderickgroup.com

**ERIC HAEHL**

425.646.5266

haehl@broderickgroup.com

*The information contained herein has been given to us by the owner or sources that we deem reliable. We have no reason to doubt its accuracy, but we do not guarantee it. Prospective tenants should carefully verify all information contained herein.*

# KEY BANK BUILDING

10655 NE 4<sup>TH</sup> STREET • BELLEVUE, WA



For further information please contact  
exclusive leasing agents:

**COLIN TANIGAWA**

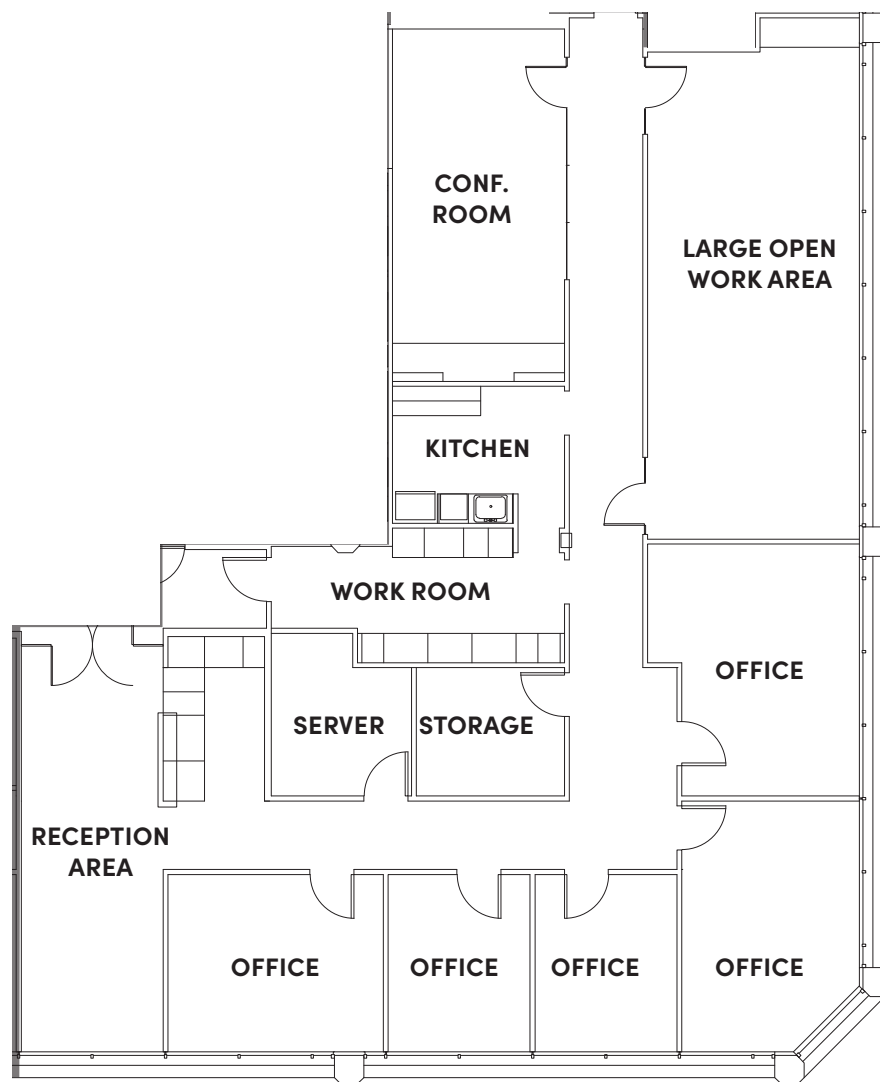
425.274.4283

tanigawa@broderickgroup.com

**ERIC HAEHL**

425.646.5266

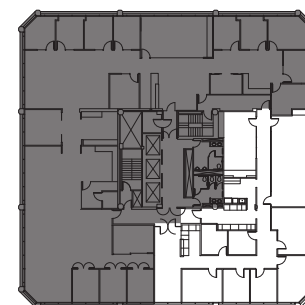
haehl@broderickgroup.com



## SUITE 910 3,860 SF

Reception area  
Five (5) private offices  
Large conference room  
Large open work area  
Storage & server room  
Kitchenette & work room  
Available Now

**SEE ENLARGED  
FLOOR PLAN**



[↑ BACK TO AVAILABLE](#)



# SUITE 704

## 1,645 SF

Reception area

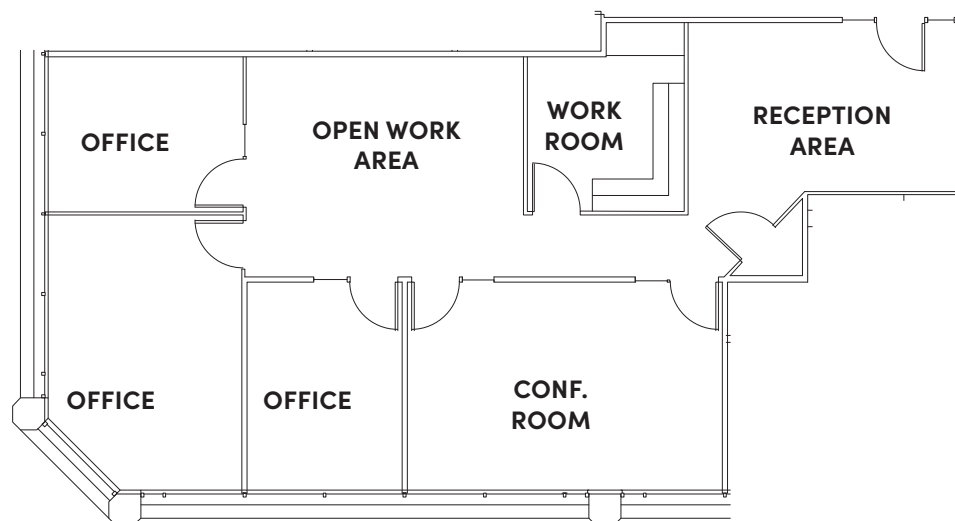
Three (3) private offices

Large conference room

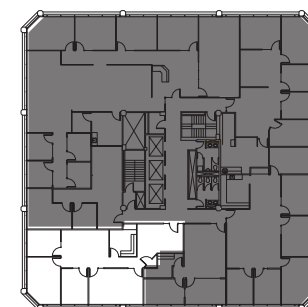
Open work area

Work room

Available 1/1/2026



**SEE ENLARGED  
FLOOR PLAN**



# KEY BANK BUILDING

10655 NE 4<sup>TH</sup> STREET • BELLEVUE, WA



For further information please contact  
exclusive leasing agents:

**COLIN TANIGAWA**

425.274.4283

[tanigawa@broderickgroup.com](mailto:tanigawa@broderickgroup.com)

**ERIC HAEHL**

425.646.5266

[haehl@broderickgroup.com](mailto:haehl@broderickgroup.com)

[↑ BACK TO AVAILABLE](#)

# KEY BANK BUILDING

10655 NE 4<sup>TH</sup> STREET • BELLEVUE, WA



For further information please contact  
exclusive leasing agents:

**COLIN TANIGAWA**

425.274.4283

tanigawa@broderickgroup.com

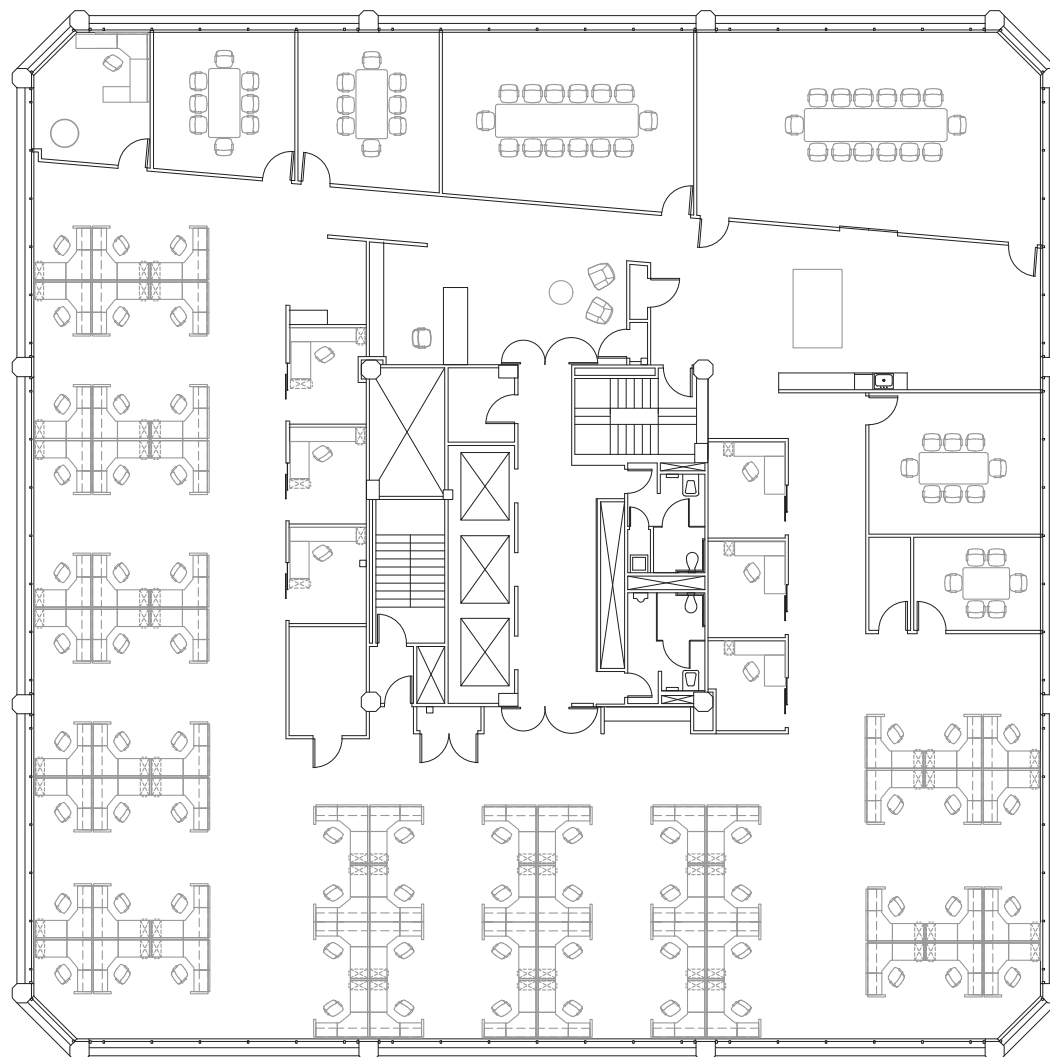
**ERIC HAEHL**

425.646.5266

haehl@broderickgroup.com



[CLICK TO VIEW VIRTUAL TOUR](#)



## SUITE 400 11,518 SF FURNITURE PLAN

Full Floor Opportunity

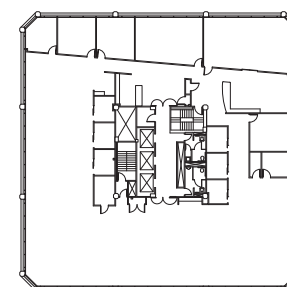
66 Workstations

7 Conference rooms

6 Interior offices

Furniture can be included

[SEE ENLARGED  
FLOOR PLAN](#)



[BACK TO AVAILABLE](#)

# KEY BANK BUILDING

10655 NE 4<sup>TH</sup> STREET • BELLEVUE, WA



For further information please contact  
exclusive leasing agents:

**COLIN TANIGAWA**

425.274.4283

tanigawa@broderickgroup.com

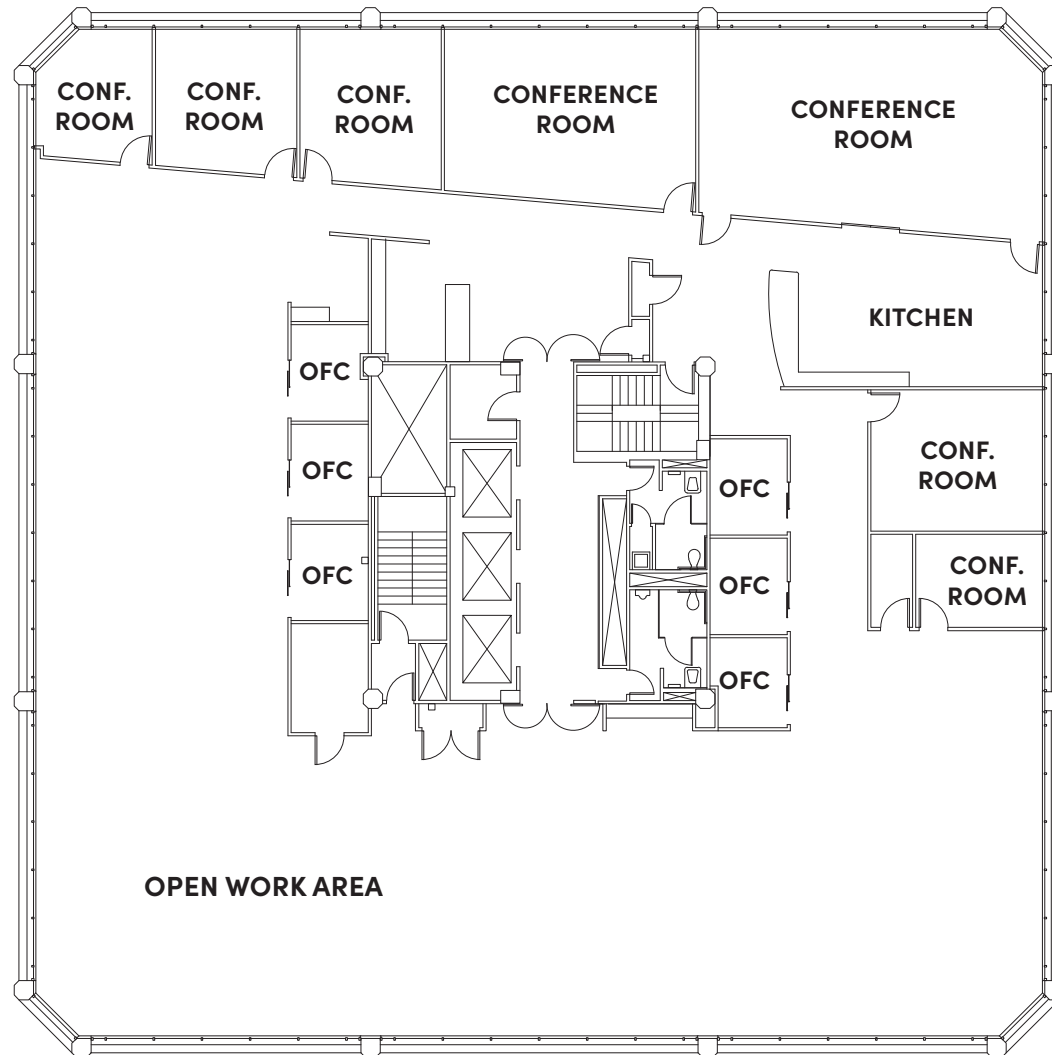
**ERIC HAEHL**

425.646.5266

haehl@broderickgroup.com



[CLICK TO VIEW VIRTUAL TOUR](#)



## SUITE 400 11,518 SF

Full Floor Opportunity

Private offices

Conference rooms

Open work area

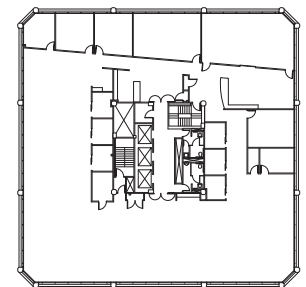
Kitchen

Reception area

Furniture can be included

Available Now

[SEE ENLARGED  
FLOOR PLAN](#)



[BACK TO AVAILABLE](#)

# KEY BANK BUILDING

10655 NE 4<sup>TH</sup> STREET • BELLEVUE, WA



For further information please contact  
exclusive leasing agents:

**COLIN TANIGAWA**

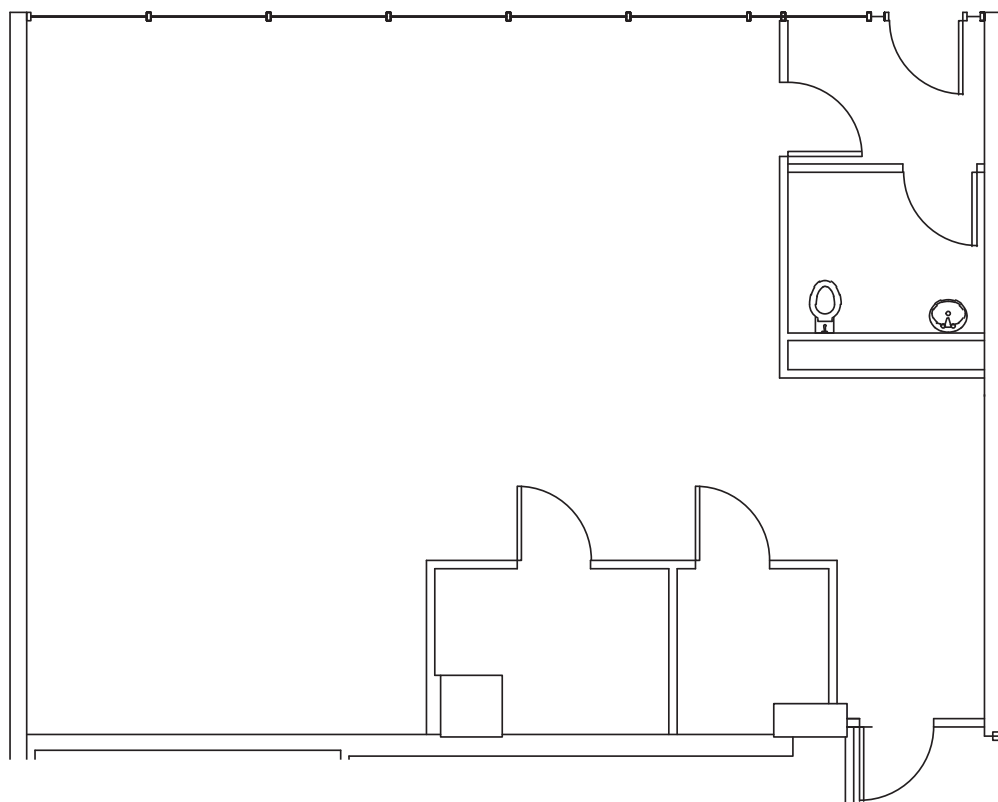
425.274.4283

[tanigawa@broderickgroup.com](mailto:tanigawa@broderickgroup.com)

**ERIC HAEHL**

425.646.5266

[haehl@broderickgroup.com](mailto:haehl@broderickgroup.com)



## SUITE L-101 1,565 SF

Large open work area

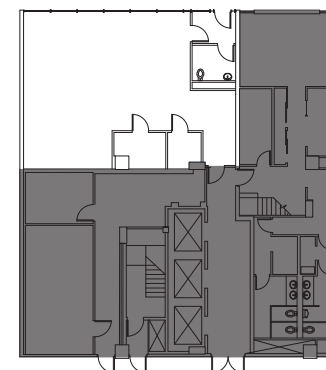
High ceilings

Server room

Private restroom

Available Now

**SEE ENLARGED  
FLOOR PLAN**



**BACK TO AVAILABLE**

# AMENITIES MAP

