

# KEY BANK BUILDING

10655 NE 4<sup>TH</sup> STREET • BELLEVUE, WA



For further information please contact  
exclusive leasing agents:

**COLIN TANIGAWA**

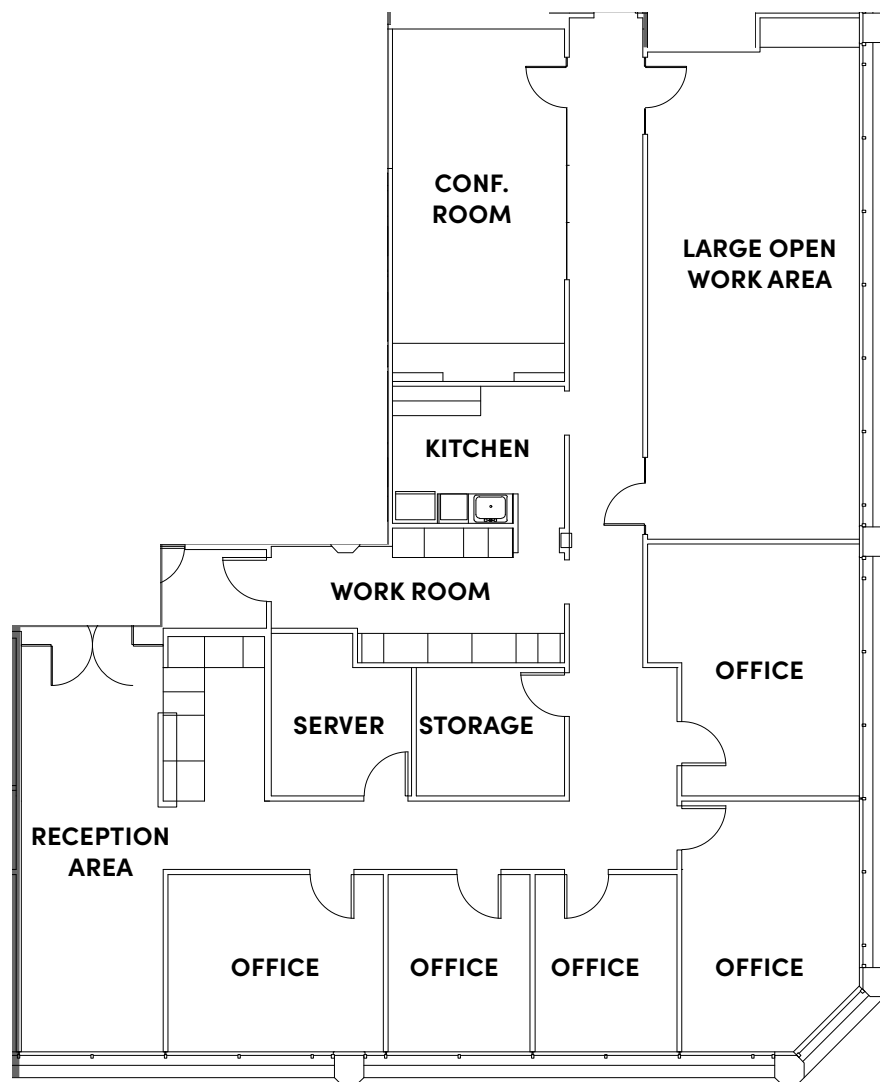
425.274.4283

tanigawa@broderickgroup.com

**ERIC HAEHL**

425.646.5266

haehl@broderickgroup.com



## SUITE 910 3,860 SF

Reception area  
Five (5) private offices  
Large conference room  
Large open work area  
Storage & server room  
Kitchenette & work room  
Available Now

**SEE ENLARGED  
FLOOR PLAN**



[↑ BACK TO AVAILABLE](#)