



FINANCIAL CENTER

1215 Fourth Avenue
Seattle, Washington 98101

For further information,
please contact:

Damon McCartney

(206) 838-7633

mccartney@broderickgroup.com

David Greenwood

(206) 838-7635

greenwood@broderickgroup.com



Broderick Group, Inc.
10500 NE 8th Street, Suite 900
Bellevue, WA 98004
main: (206) 838-5775

broderickgroup.com

The information contained herein has been given to us
by the owner or sources which we deem reliable.
We have no reason to doubt its accuracy, but we do not
guarantee it. Prospective tenants should carefully verify
all information contained herein.

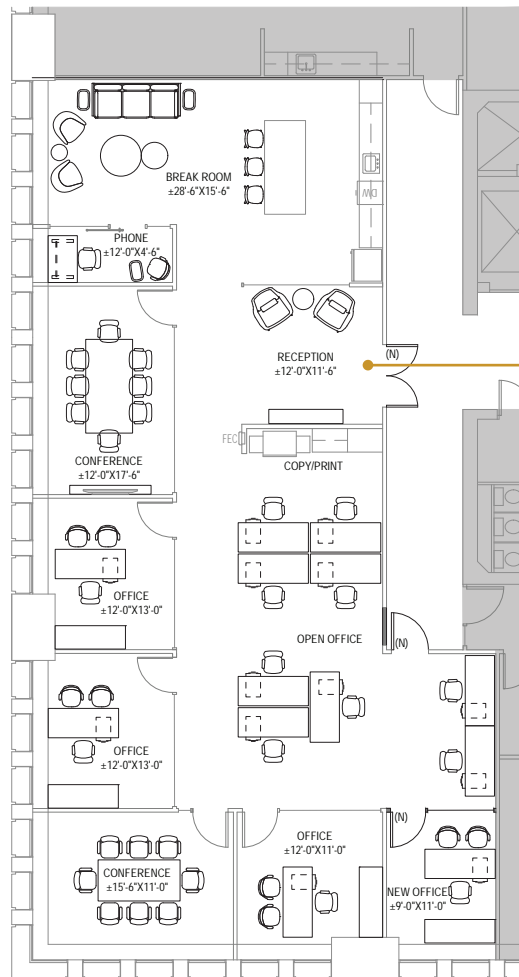


For virtual tour, visit:

bit.ly/3z7CHcF

SUITE 1125

3,179 RSF



Suite 1125

*Furniture is not available

SPACE FEATURES

- » Available now!
- » Lobby exposure
- » Open work station area
- » Multiple private offices
- » Multiple conference rooms
- » Contiguous option with Suite

1150 for a total of 8,268 RSF



METROTRACT
SEATTLE