

# 25 CENTRAL

**Recently Refurbished  
Office Building in  
Downtown Kirkland  
w/ Lake Washington Views**

**Lobby Level: 4,220 RSF**  
**Available for Lease**



**VIEW DRONE VIDEO**

**BRODERICK**  
• GROUP •

**JIM KINERK**

(425) 646-5221  
[kinerk@broderickgroup.com](mailto:kinerk@broderickgroup.com)

**AL HODGE**

(425) 646-5240  
[hodge@broderickgroup.com](mailto:hodge@broderickgroup.com)

**NORTHSTREAM**

The information contained herein has been given to us by the owner or sources which we deem reliable. We have no reason to doubt its accuracy, but we do not guarantee it. Prospective tenants should carefully verify all information contained herein.

# 25 CENTRAL

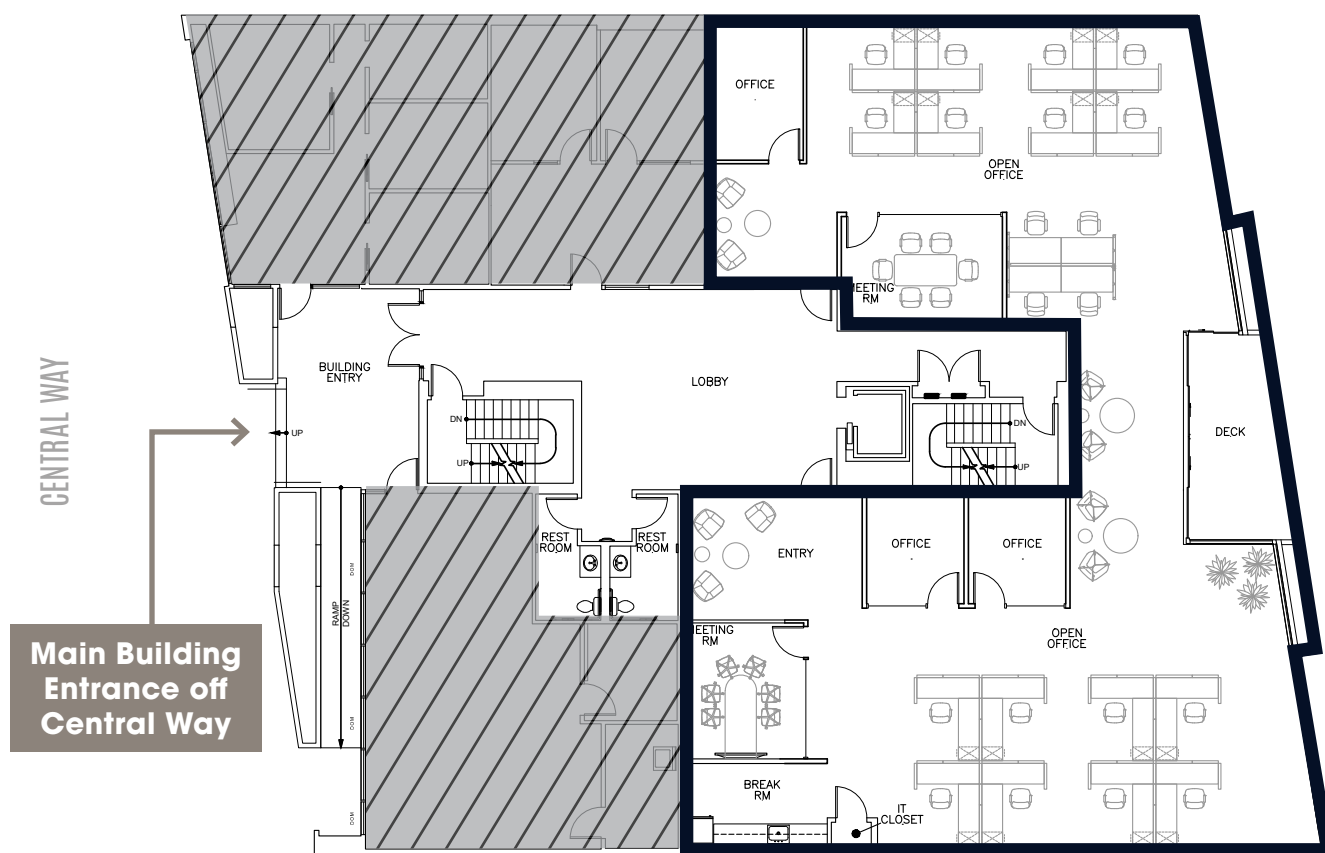
## LOBBY LEVEL

RSF TOTAL  
**4,220**

VIEWS OF

## Marina Park & Lake Washington

- Lobby Level - 4,220 RSF (first floor space)
- Available Now
- High visibility space located just off of the building lobby
- **MAKE-READY BUILDOUT:** Two meeting rooms, three private offices, large open area, break room, and balcony deck with Lake Washington views



**VIEW VIRTUAL TOUR**



# 25 CENTRAL

INTERIOR

## Main Lobby & Suite



## BUILDING DETAILS

- Newly renovated building entrance, lobby and restrooms
- Marina Park and Lake Washington views
- Covered reserved parking spaces
- City of Kirkland parking available nearby
- Internet Providers: Comcast, Frontier, Allstream
- Easy walking to Kirkland retail shops and restaurants



# 25 CENTRAL

## NEARBY Amenities

