

# PAINE FIELD

## BUSINESS PARK

2615 WEST CASINO ROAD  
EVERETT, WASHINGTON 98204

### SUITE 3 A-E (CONCEPTUAL PLAN) AVAILABLE NOW

SUITES CAN BE LEASED SEPARATELY

TOTAL SF: 7,709 RSF

OFFICE SF: 2,752 RSF

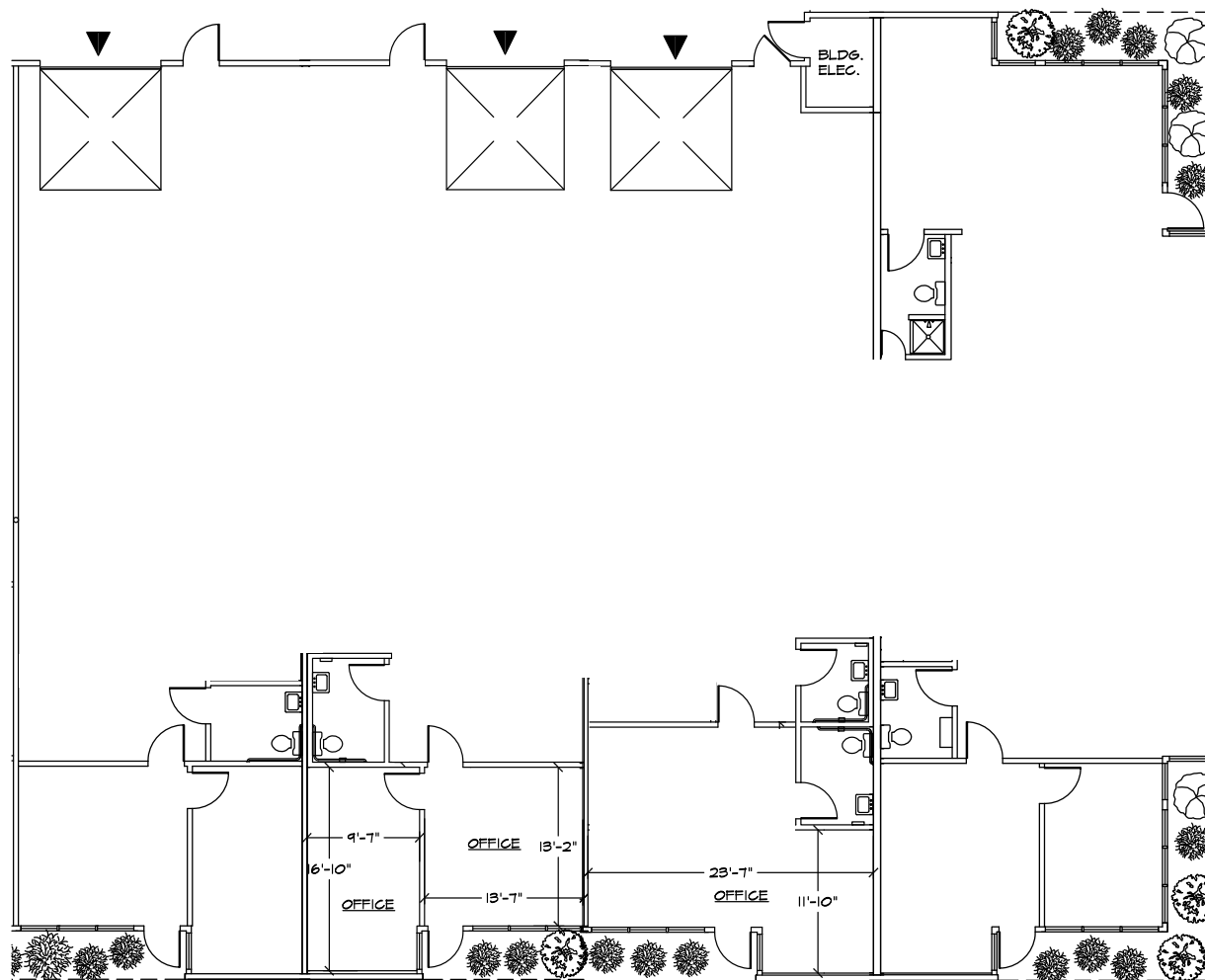
WAREHOUSE SF: 4,957 RSF

BASE RENT: \$10,408

NNN: \$2,930

GROSS RENT: \$13,338

The information contained herein has been given to us by the owner or sources that we deem reliable. We have no reason to doubt its accuracy, but we do not guarantee it. Prospective tenants should carefully verify all information contained herein.



↑ BACK TO AVAILABLE SPACE



**BRODERICK**  
• GROUP •

**CONNOR GILCHRIST**  
425.274.4286  
[gilchrist@broderickgroup.com](mailto:gilchrist@broderickgroup.com)

**RAWLEY HOLMBERG**  
425.274.4284  
[holmberg@broderickgroup.com](mailto:holmberg@broderickgroup.com)

**SAMSON TORO**  
425.274.4289  
[toro@broderickgroup.com](mailto:toro@broderickgroup.com)

OWNED AND MANAGED BY:

  
**Schnitzer**  
PROPERTIES

# PAINE FIELD

## BUSINESS PARK

2615 WEST CASINO ROAD  
EVERETT, WASHINGTON 98204

### SUITE 3 A-E (EXISTING PLAN) AVAILABLE NOW

SUITES CAN BE LEASED SEPARATELY

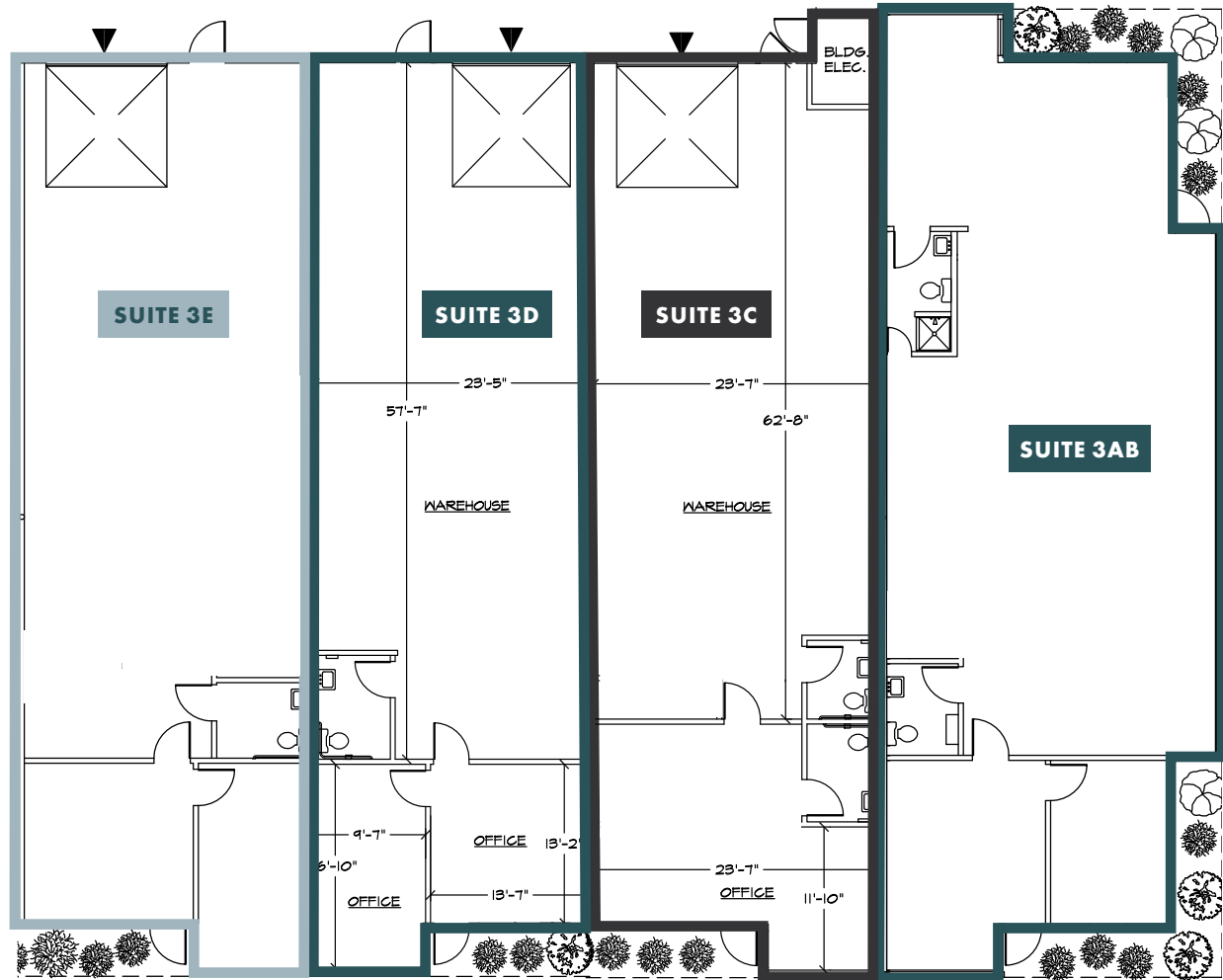
SUITE 3AB SF: 2,245 RSF (1,142 RSF Office)

SUITE 3C SF: 1,811 RSF (546 RSF Office)

SUITE 3D SF: 1,829 RSF (497 RSF Office)

SUITE 3E SF: 1,824 RSF (567 RSF Office)

*The information contained herein has been given to us by the owner or sources that we deem reliable. We have no reason to doubt its accuracy, but we do not guarantee it. Prospective tenants should carefully verify all information contained herein.*



↑ BACK TO AVAILABLE SPACE

**BRODERICK**  
• GROUP •

**CONNOR GILCHRIST**  
425.274.4286  
[gilchrist@broderickgroup.com](mailto:gilchrist@broderickgroup.com)

**RAWLEY HOLMBERG**  
425.274.4284  
[holmberg@broderickgroup.com](mailto:holmberg@broderickgroup.com)

**SAMSON TORO**  
425.274.4289  
[toro@broderickgroup.com](mailto:toro@broderickgroup.com)

OWNED AND MANAGED BY:

**Schnitzer**  
PROPERTIES