

KEY BANK BUILDING

10655 NE 4TH STREET • BELLEVUE, WA



For further information please contact
exclusive leasing agents:

COLIN TANIGAWA

425.274.4283

tanigawa@broderickgroup.com

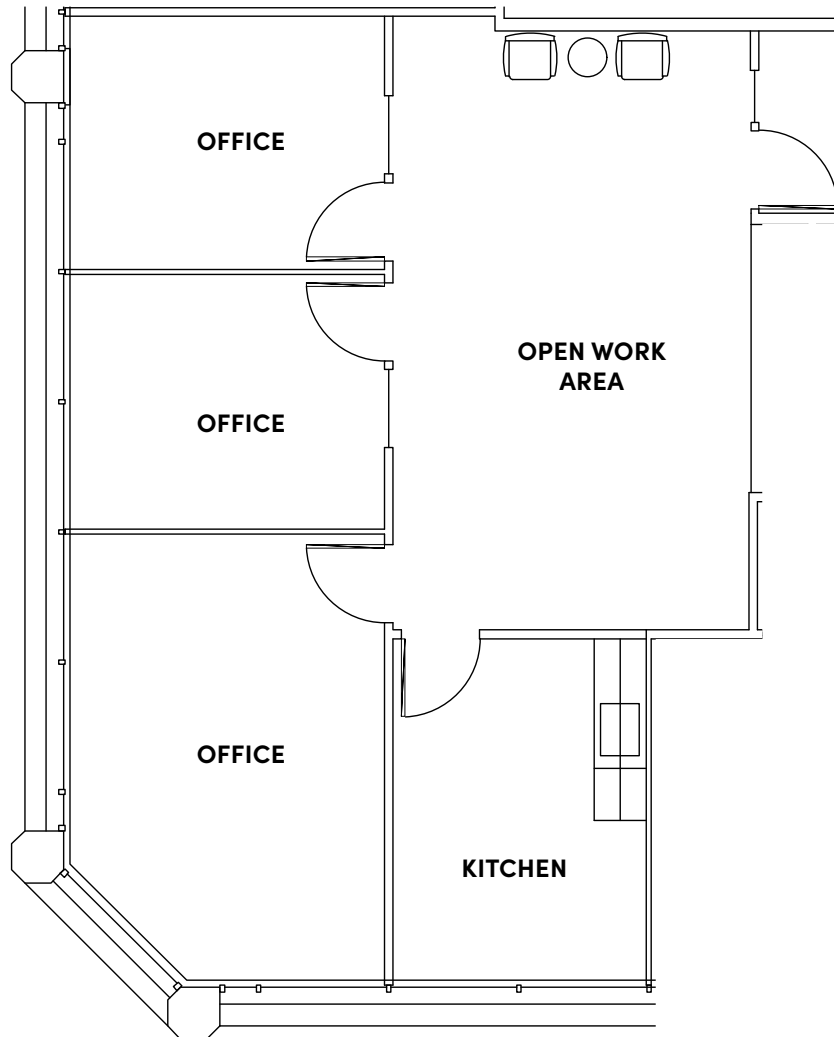
ERIC HAEHL

425.646.5266

haehl@broderickgroup.com



[CLICK TO VIEW VIRTUAL TOUR](#)



SUITE 210 1,197 SF

Three (3) private offices

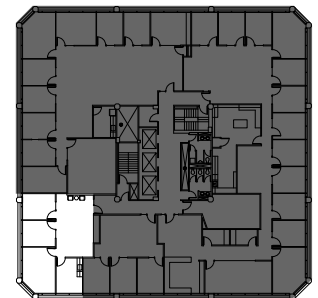
Kitchen

Open work area

Available Now

Can be combined with Suite
208 for a total of 2,159 RSF

[SEE ENLARGED
FLOOR PLAN](#)



[↑ BACK TO AVAILABLE](#)