



PUGET SOUND PLAZA





PUGET SOUND PLAZA

1325 Fourth Avenue | Seattle, Washington 98101



BUILDING FACTS

- » Total Building Size.....279,586 RSF
- » Number of Floors21
- » Average Floor Plate.....13,800 RSF
- » Year Built.....1960
- » Parking Ratio.....1 / 1,800 SF
- » LEED Gold Certified
- » Fitwel Viral Response Certified

BUILDING AMENITIES

- » Lobby
- » Conference room facility
- » Shower
- » 306 parking stalls
- » EV charging system
- » Bike storage
- » MT Fitness Center located on the Lower Level of Rainier Tower

ON-SITE RETAIL

- » Key Bank
- » Seattle Vision Care
- » Kudedon Noodles



Fitwel®
Viral Response
Certified

Click the play buttons for virtual tours



Damon McCartney
(206) 838-7633
mccartney@broderickgroup.com

David Greenwood
(206) 838-7635
greenwood@broderickgroup.com



PUGET SOUND PLAZA

1325 Fourth Avenue | Seattle, Washington 98101

WALK SCORE
99
AVG ACROSS ALL
METROPOLITAN TRACT BLDGS

Lifestyle

1. Regal Cinemas
2. Westlake Park
3. Home Street Bank
4. 5th Avenue Theater
5. U.S. Post Office
6. Key Bank
7. Benaroya Hall
8. Seattle Art Museum
9. Queen Bee Nail Spa
10. American West Bank
11. UPS Store
12. Union Bank
13. Seattle Infant Development Center
14. Banner Bank
15. Bank of America
16. Seattle Public Library
17. Samir's Salon
18. Silicon Valley Bank
19. Downtown Dentistry
20. Capelli's Barbershop
21. Northwest Bank
22. YMCA - Facility / Child Care
23. Equinox Gym
24. Graham Rehabilitation and Wellness Center, Inc.

Restaurant / Bar

1. Cheesecake Factory
2. SPIN Seattle
3. Ben Paris
4. Hard Rock Café
5. Blarney Stone Pub
6. Japonessa
7. Wild Ginger
8. Elephant & Castle
9. Ruth's Chris Steak House
10. Cortina
11. Goldfinch Tavern
12. Post Alley Pizza
13. Purple Café & Wine Bar
14. Outlier
15. Lobby Court
16. Tulio
17. Charlotte Restaurant & Lounge
18. Schuckers
19. Capital Grille

Coffee House

1. Starbucks
2. Fonte
3. Pegasus Coffee Bar
4. Vovito
5. Retro Coffee
6. Caffe Ladro
7. Cafe Miglore
8. Fonte

Hotel

1. Grand Hyatt Hotel
2. Sheraton Hotel
3. Hilton Seattle
4. Hotel Vintage Seattle
5. W Seattle
6. Hotel 1000
7. Renaissance Seattle Hotel

Deli / Grab & Go

1. McDonald's
2. Pho 25
3. Chipotle
4. Gelatiamo
5. Sushi Kudasai
6. Jimmy John's
7. Subway
8. MOD Pizza
9. Melange Market
10. The Deli
11. Potbelly Sandwich Shop
12. Blue Water Taco Grill
13. Homegrown Sustainable Sandwich Shop
14. Evergreens Salad
15. Market Fresh
16. PCC Market (NEW)
17. Kudedon Noodles
18. Mendocino Farms (NEW)

Retail

1. Old Navy
2. AT&T
3. Nordstrom Rack
4. ZARA
5. Target
6. Nordstrom
7. Ross Dress for Less
8. Urban Outfitters
9. Ben Bridge Jeweler
10. Watson Kennedy Fine Home
11. Bartell Drugs



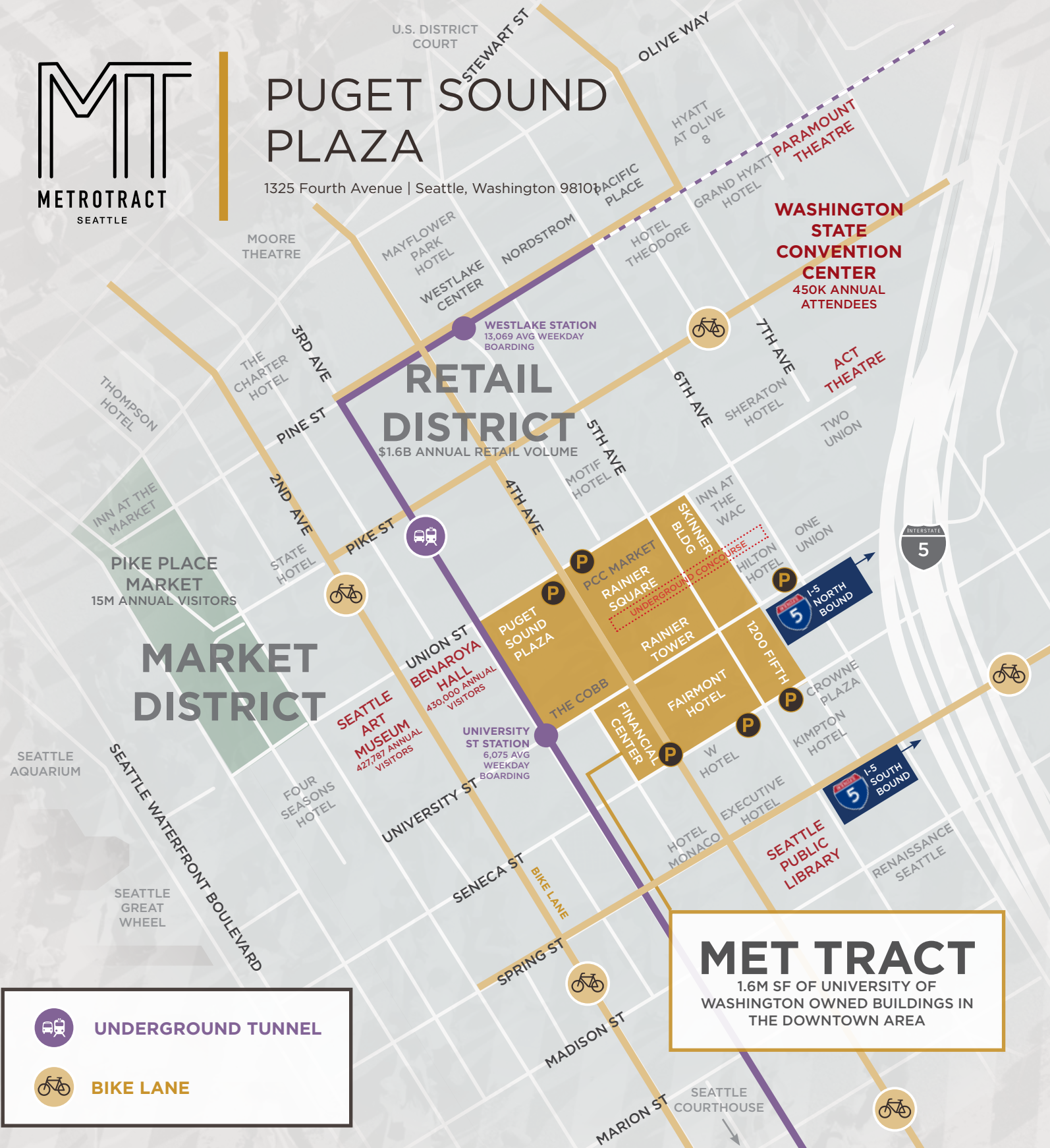
Underground Tunnel



Bike Lane

PUGET SOUND PLAZA

1325 Fourth Avenue | Seattle, Washington 98101



MET TRACT

1.6M SF OF UNIVERSITY OF WASHINGTON OWNED BUILDINGS IN THE DOWNTOWN AREA



PUGET SOUND PLAZA

1325 Fourth Avenue
Seattle, Washington 98101

Damon McCartney
(206) 838-7633
mccartney@broderickgroup.com

David Greenwood
(206) 838-7635
greenwood@broderickgroup.com



Broderick Group, Inc.
10500 NE 8th Street, Suite 900
Bellevue, WA 98004
main: (206) 838-5775

broderickgroup.com

The information contained herein has been given to us by the owner or sources which we deem reliable. We have no reason to doubt its accuracy, but we do not guarantee it. Prospective tenants should carefully verify all information contained herein.

CURRENT AVAILABLE SUITES

Floor / Suite	RSF	Comments
20/2000	13,630	Available now! Open work area, kitchenette, multiple private offices, multiple conference rooms. Virtual Tour available at bit.ly/3S1UiyC
19/1945	940	Available now! Private office, open work area and kitchenette. Contiguous option with Suite 1940 for a total of 4,933 RSF.
19/1940	3,993	Available 7/1/2025. Open work area and kitchenette. Contiguous option with Suite 1945 for a total of 4,933 RSF.
17/1700	1,942	Available 10/1/2025. Multiple private offices, kitchenette and conference room.
16/1600	6,883	Available now! Multiple private offices, multiple conference rooms and kitchenette. Virtual Tour available at bit.ly/3AXDm75
15/1510	1,017	Available now! Private office, open area, and a conference room.
14/1425	1,901	Available 9/1/2025. Multiple private offices, kitchenette and conference room.
13/1305	2,380	Available now! Kitchenette, open work area, private office and multiple conference rooms
12/1245	1,510	Available now! Dental office use with four private offices with dedicated plumbing, a kitchenette, break room, and reception area Virtual Tour available at bit.ly/2N3Ajxz
12/1240	2,069	Available now! Dental office use with five private offices with dedicated plumbing, two private bathrooms, and break room/staff lounge. Virtual Tour available at bit.ly/2N3Ajxz
11/1100	9,455	Available now! Kitchenette, open work area, private office and multiple conference rooms
10/1005	3,024	Available now! Open work area, kitchenette, multiple private offices, multiple conference rooms. Virtual Tour available at bit.ly/2UEbZpy
8/800	13,852	Available now! Kitchenette, open work area, private office and multiple conference rooms
5/540	1,291	Available now! Two private offices, conference room, open work area, west facing, kitchenette. Contiguous option with Suite 535 for a total of 5,282 RSF. Virtual Tour available at bit.ly/3fsZgyx
5/535	3,991	Available now! Warm shell condition, new ceiling/lighting. Contiguous option with Suite 540 for a total of 5,282 RSF. Virtual Tour available at bit.ly/31qUWbS
4/400	11,710	Available now! 15 private office spaces, open work area, kitchenette.
2/210	3,133	Available now! Medical/office space. Contiguous option with Suite 200 for a total of 5,732 RSF.
2/200	2,599	Available now! Kitchenette, open work area. Contiguous option with Suite 210 for a total of 5,732 RSF.



PUGET SOUND PLAZA

1325 Fourth Avenue
Seattle, Washington 98101

Damon McCartney

(206) 838-7633

mccartney@broderickgroup.com

David Greenwood

(206) 838-7635

greenwood@broderickgroup.com



Broderick Group, Inc.
10500 NE 8th Street, Suite 900
Bellevue, WA 98004
main: (206) 838-5775

broderickgroup.com

The information contained herein has been given to us
by the owner or sources which we deem reliable.
We have no reason to doubt its accuracy, but we do not
guarantee it. Prospective tenants should carefully verify
all information contained herein.

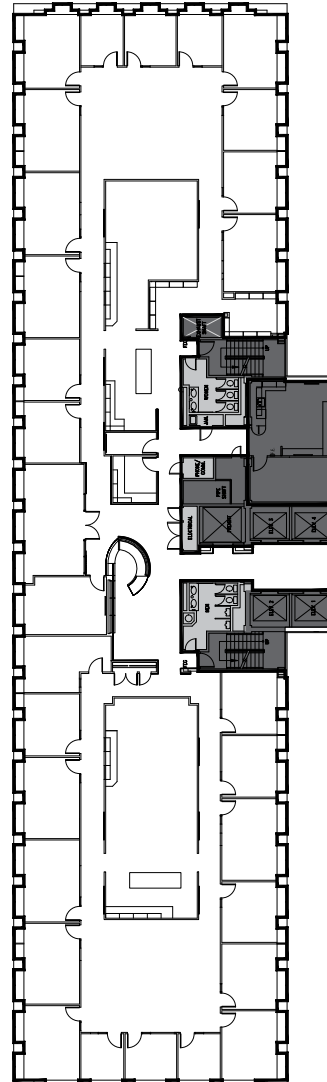


For virtual tour, visit:

bit.ly/3S1Uiyc

SUITE 2000

13,630 RSF



SPACE FEATURES

- » Available now!
- » Kitchenette
- » Open work area
- » Multiple private offices
- » Multiple conference rooms



METROTRACT
SEATTLE



PUGET SOUND PLAZA

1325 Fourth Avenue
Seattle, Washington 98101



Damon McCartney

(206) 838-7633

mccartney@broderickgroup.com

David Greenwood

(206) 838-7635

greenwood@broderickgroup.com

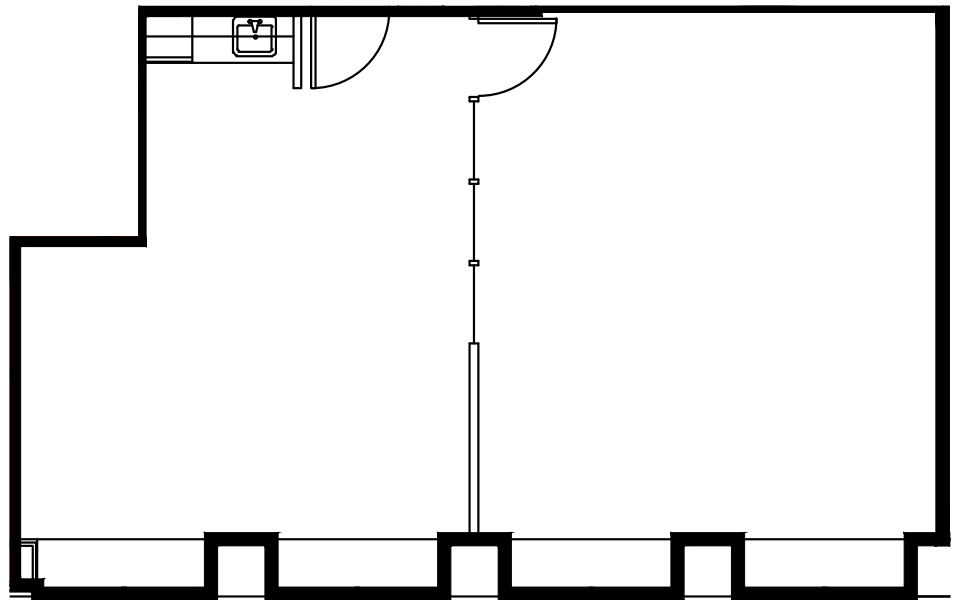


Broderick Group, Inc.
10500 NE 8th Street, Suite 900
Bellevue, WA 98004
main: (206) 838-5775

broderickgroup.com

The information contained herein has been given to us by the owner or sources which we deem reliable. We have no reason to doubt its accuracy, but we do not guarantee it. Prospective tenants should carefully verify all information contained herein.

SUITE 1945 940 RSF



SPACE FEATURES

- » Available now!
- » Private Office
- » Open work area
- » Kitchenette
- » Contiguous option with Suite 1940 for a total of 4,933 RSF



METROTRACT
SEATTLE



PUGET SOUND PLAZA

1325 Fourth Avenue
Seattle, Washington 98101

Damon McCartney

(206) 838-7633

mccartney@broderickgroup.com

David Greenwood

(206) 838-7635

greenwood@broderickgroup.com

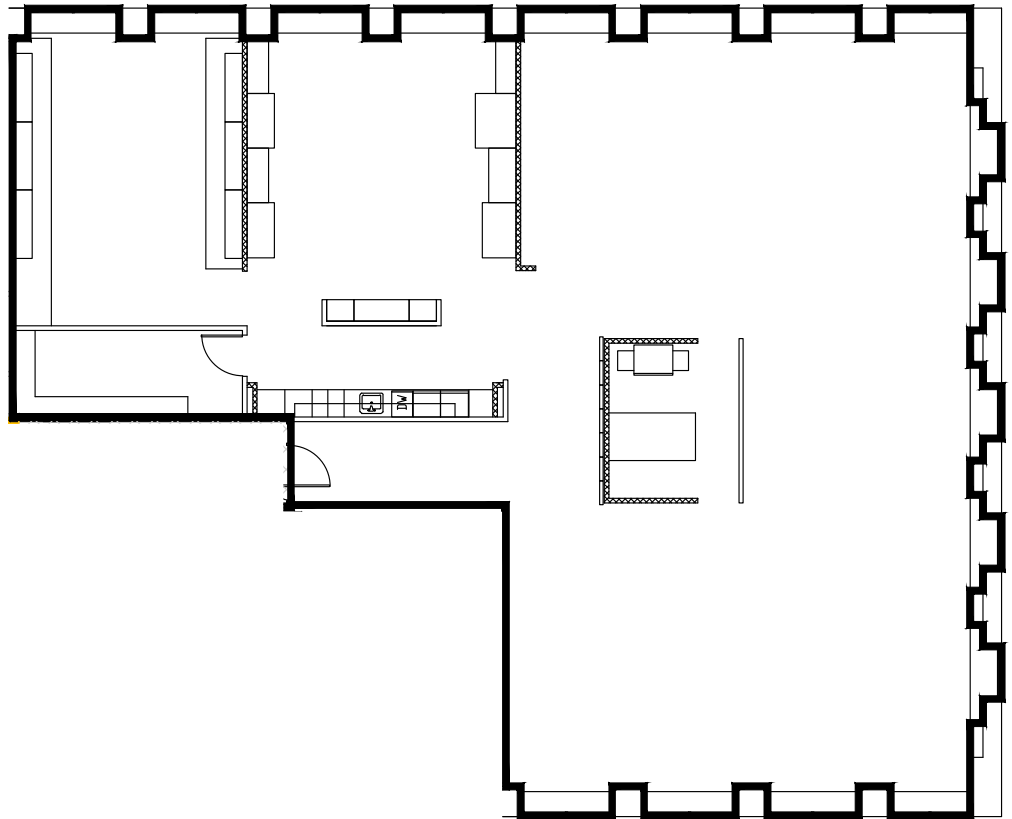


Broderick Group, Inc.
10500 NE 8th Street, Suite 900
Bellevue, WA 98004
main: (206) 838-5775

broderickgroup.com

The information contained herein has been given to us
by the owner or sources which we deem reliable.
We have no reason to doubt its accuracy, but we do not
guarantee it. Prospective tenants should carefully verify
all information contained herein.

SUITE 1940 3,993 RSF



SPACE FEATURES

- » Available 7/1/2025
- » Open work area
- » Kitchenette
- » Contiguous option with Suite 1945
for a total of 4,933 RSF



METROTRACT
SEATTLE



PUGET SOUND PLAZA

1325 Fourth Avenue
Seattle, Washington 98101



Damon McCartney

(206) 838-7633

mccartney@broderickgroup.com

David Greenwood

(206) 838-7635

greenwood@broderickgroup.com

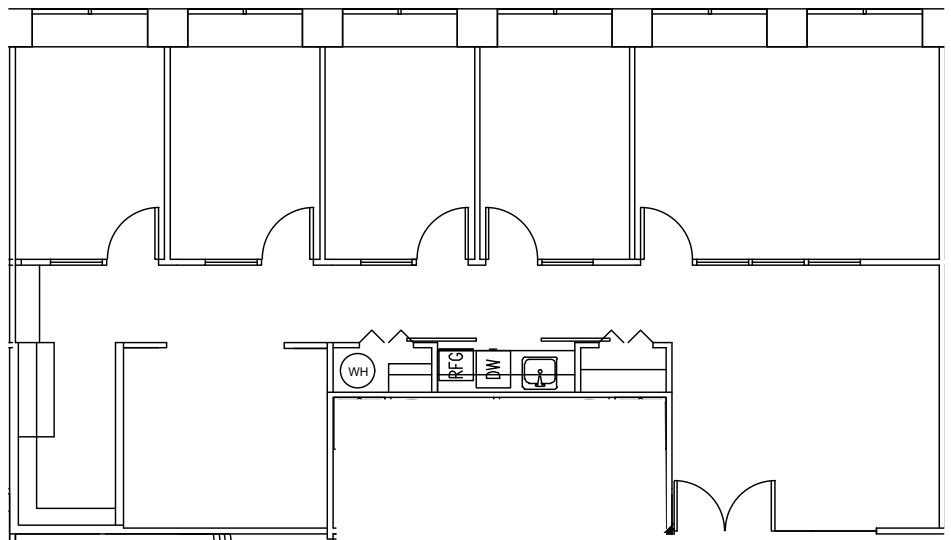


Broderick Group, Inc.
10500 NE 8th Street, Suite 900
Bellevue, WA 98004
main: (206) 838-5775

broderickgroup.com

The information contained herein has been given to us
by the owner or sources which we deem reliable.
We have no reason to doubt its accuracy, but we do not
guarantee it. Prospective tenants should carefully verify
all information contained herein.

SUITE 1700 1,942 RSF



SPACE FEATURES

- » Available 10/1/2025
- » Multiple private offices
- » Conference room
- » Kitchenette



METROTRACT
SEATTLE



PUGET SOUND PLAZA

1325 Fourth Avenue
Seattle, Washington 98101

Damon McCartney

(206) 838-7633

mccartney@broderickgroup.com

David Greenwood

(206) 838-7635

greenwood@broderickgroup.com



Broderick Group, Inc.
10500 NE 8th Street, Suite 900
Bellevue, WA 98004
main: (206) 838-5775

broderickgroup.com

The information contained herein has been given to us
by the owner or sources which we deem reliable.
We have no reason to doubt its accuracy, but we do not
guarantee it. Prospective tenants should carefully verify
all information contained herein.

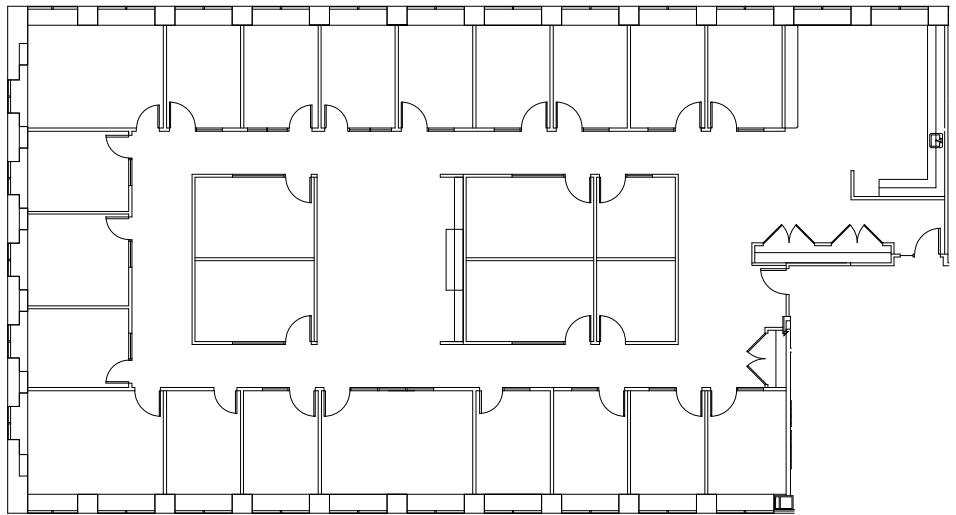


For virtual tour, visit:

bit.ly/3AXDm75

SUITE 1600

6,883 RSF



SPACE FEATURES

- » Available now!
- » Multiple private offices
- » Multiple conference rooms
- » Kitchenette



METROTRACT
SEATTLE



PUGET SOUND PLAZA

1325 Fourth Avenue
Seattle, Washington 98101



Damon McCartney

(206) 838-7633

mccartney@broderickgroup.com

David Greenwood

(206) 838-7635

greenwood@broderickgroup.com

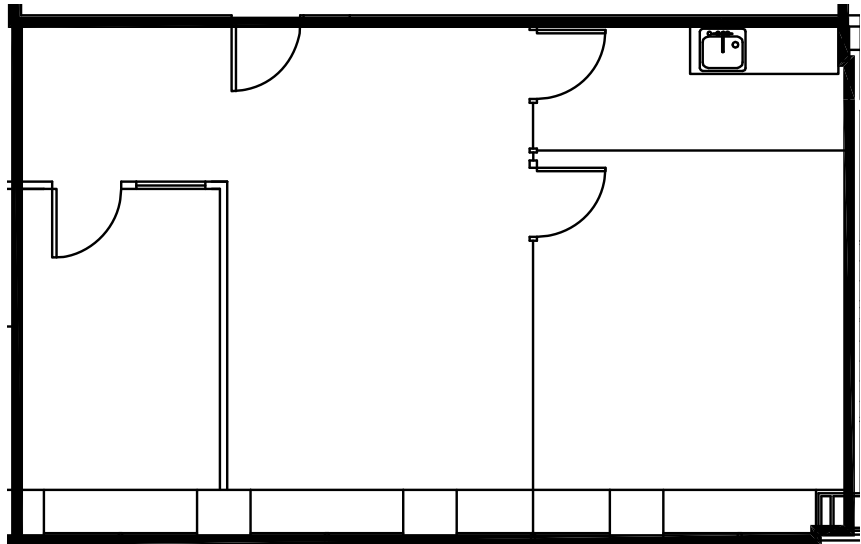


Broderick Group, Inc.
10500 NE 8th Street, Suite 900
Bellevue, WA 98004
main: (206) 838-5775

broderickgroup.com

The information contained herein has been given to us
by the owner or sources which we deem reliable.
We have no reason to doubt its accuracy, but we do not
guarantee it. Prospective tenants should carefully verify
all information contained herein.

SUITE 1510 1,017 RSF



SPACE FEATURES

- » Available Now!
- » Private offices
- » Open area
- » Conference room



METROTRACT
SEATTLE



PUGET SOUND PLAZA

1325 Fourth Avenue
Seattle, Washington 98101



Damon McCartney

(206) 838-7633

mccartney@broderickgroup.com

David Greenwood

(206) 838-7635

greenwood@broderickgroup.com

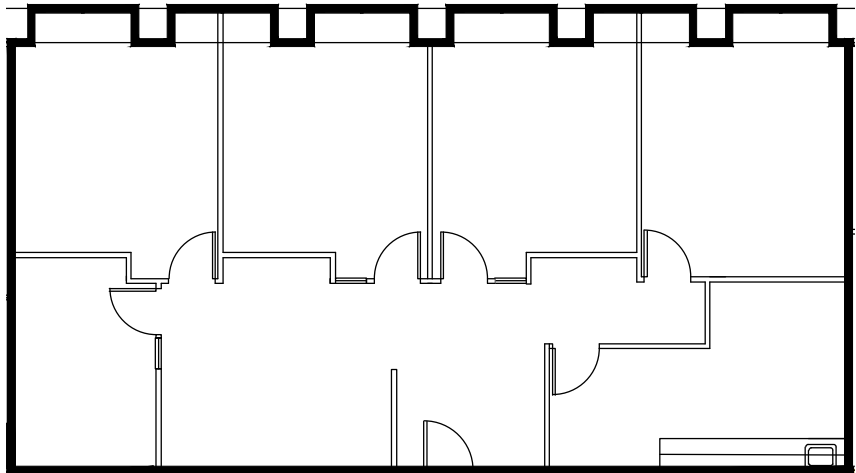


Broderick Group, Inc.
10500 NE 8th Street, Suite 900
Bellevue, WA 98004
main: (206) 838-5775

broderickgroup.com

The information contained herein has been given to us
by the owner or sources which we deem reliable.
We have no reason to doubt its accuracy, but we do not
guarantee it. Prospective tenants should carefully verify
all information contained herein.

SUITE 1425 1,901 RSF



SPACE FEATURES

- » Available 9/1/2025
- » Private offices
- » Kitchenette
- » Conference room



METROTRACT
SEATTLE



PUGET SOUND PLAZA

1325 Fourth Avenue
Seattle, Washington 98101



Damon McCartney

(206) 838-7633

mccartney@broderickgroup.com

David Greenwood

(206) 838-7635

greenwood@broderickgroup.com

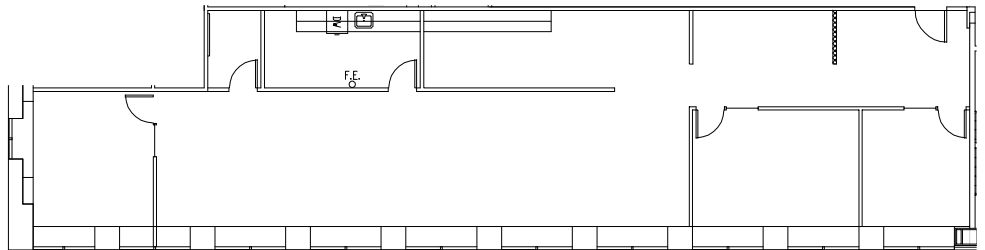


Broderick Group, Inc.
10500 NE 8th Street, Suite 900
Bellevue, WA 98004
main: (206) 838-5775

broderickgroup.com

The information contained herein has been given to us
by the owner or sources which we deem reliable.
We have no reason to doubt its accuracy, but we do not
guarantee it. Prospective tenants should carefully verify
all information contained herein.

SUITE 1305 2,380 RSF



SPACE FEATURES

- » Available now!
- » Kitchenette
- » Open work area
- » Private office
- » Multiple conference rooms



METROTRACT
SEATTLE



PUGET SOUND PLAZA

1325 Fourth Avenue
Seattle, Washington 98101

Damon McCartney

(206) 838-7633

mccartney@broderickgroup.com

David Greenwood

(206) 838-7635

greenwood@broderickgroup.com



Broderick Group, Inc.
10500 NE 8th Street, Suite 900
Bellevue, WA 98004
main: (206) 838-5775

broderickgroup.com

The information contained herein has been given to us
by the owner or sources which we deem reliable.
We have no reason to doubt its accuracy, but we do not
guarantee it. Prospective tenants should carefully verify
all information contained herein.

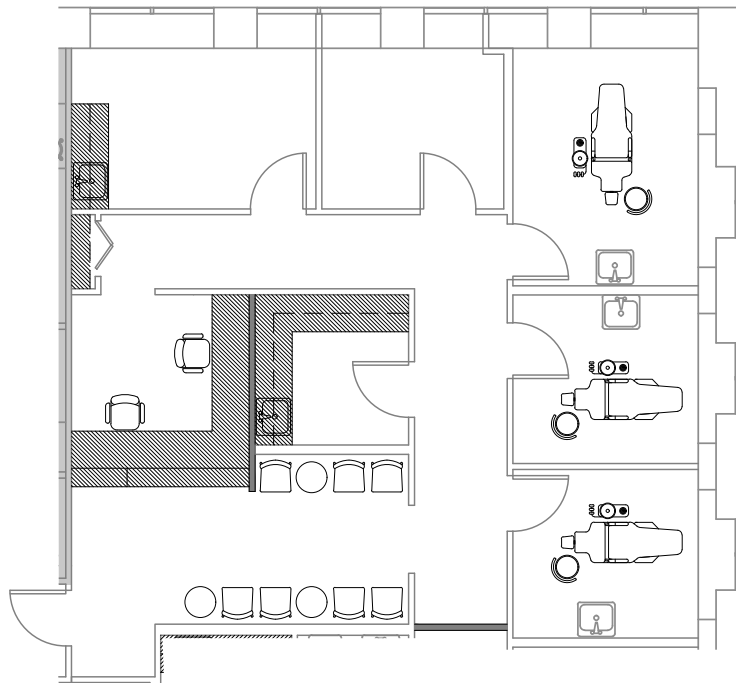


For virtual tour, visit:

bit.ly/2N3Ajxz

SUITE 1245

1,510 RSF



SPACE FEATURES

- » Available now!
- » Concept plan
- » Dental/office use
- » Four private offices with dedicated plumbing
- » Kitchenette
- » Break room
- » Reception area



METROTRACT
SEATTLE



PUGET SOUND PLAZA

1325 Fourth Avenue
Seattle, Washington 98101



Damon McCartney

(206) 838-7633

mccartney@broderickgroup.com

David Greenwood

(206) 838-7635

greenwood@broderickgroup.com



Broderick Group, Inc.
10500 NE 8th Street, Suite 900
Bellevue, WA 98004
main: (206) 838-5775

broderickgroup.com

The information contained herein has been given to us
by the owner or sources which we deem reliable.
We have no reason to doubt its accuracy, but we do not
guarantee it. Prospective tenants should carefully verify
all information contained herein.

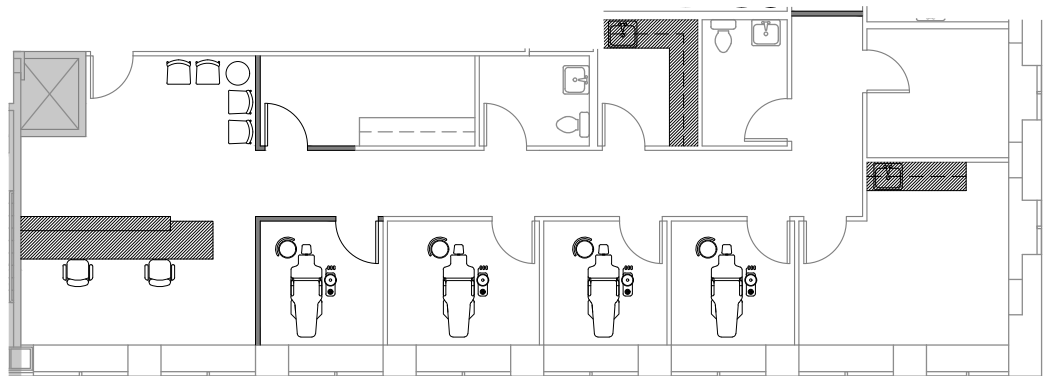


For virtual tour, visit:

bit.ly/2N3Ajxz

SUITE 1240

2,069 RSF



SPACE FEATURES

- » Available now!
- » Concept plan
- » Dental/office use
- » Five private offices with dedicated plumbing
- » Two private bathrooms
- » Break room/Staff lounge
- » Kitchenette



METROTRACT
SEATTLE



PUGET SOUND PLAZA

1325 Fourth Avenue
Seattle, Washington 98101

Damon McCartney

(206) 838-7633

mccartney@broderickgroup.com

David Greenwood

(206) 838-7635

greenwood@broderickgroup.com

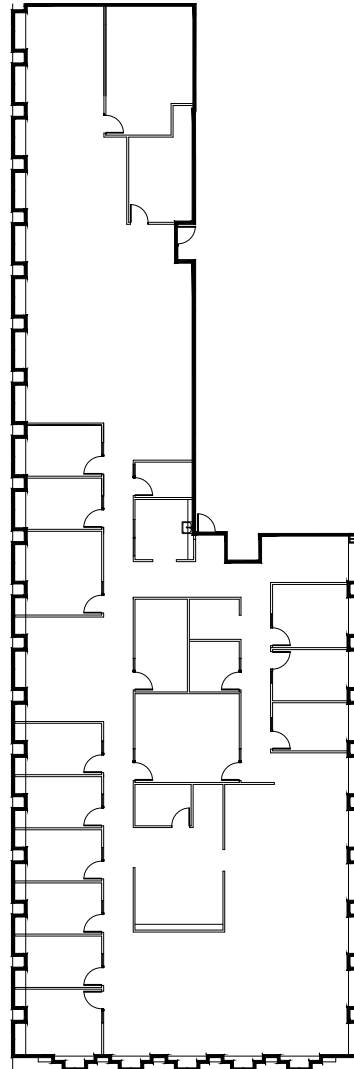


Broderick Group, Inc.
10500 NE 8th Street, Suite 900
Bellevue, WA 98004
main: (206) 838-5775

broderickgroup.com

The information contained herein has been given to us
by the owner or sources which we deem reliable.
We have no reason to doubt its accuracy, but we do not
guarantee it. Prospective tenants should carefully verify
all information contained herein.

SUITE 1100 9,455 RSF



SPACE FEATURES

- » Available now!
- » Kitchenette
- » Open work area
- » Multiple private offices
- » Multiple conference rooms



METROTRACT
SEATTLE



PUGET SOUND PLAZA

1325 Fourth Avenue
Seattle, Washington 98101



Damon McCartney

(206) 838-7633

mccartney@broderickgroup.com

David Greenwood

(206) 838-7635

greenwood@broderickgroup.com



Broderick Group, Inc.
10500 NE 8th Street, Suite 900
Bellevue, WA 98004
main: (206) 838-5775

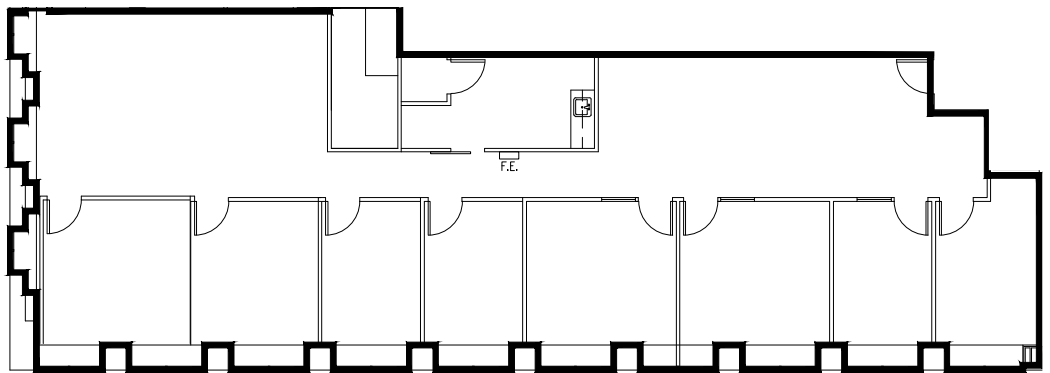
broderickgroup.com

The information contained herein has been given to us
by the owner or sources which we deem reliable.
We have no reason to doubt its accuracy, but we do not
guarantee it. Prospective tenants should carefully verify
all information contained herein.



For virtual tour, visit:
bit.ly/2UEbZpy

SUITE 1005 3,024 RSF



SPACE FEATURES

- » Available now!
- » Kitchenette
- » Open work area
- » Multiple private offices
- » Multiple conference rooms



METROTRACT
SEATTLE



PUGET SOUND PLAZA

1325 Fourth Avenue
Seattle, Washington 98101

Damon McCartney

(206) 838-7633

mccartney@broderickgroup.com

David Greenwood

(206) 838-7635

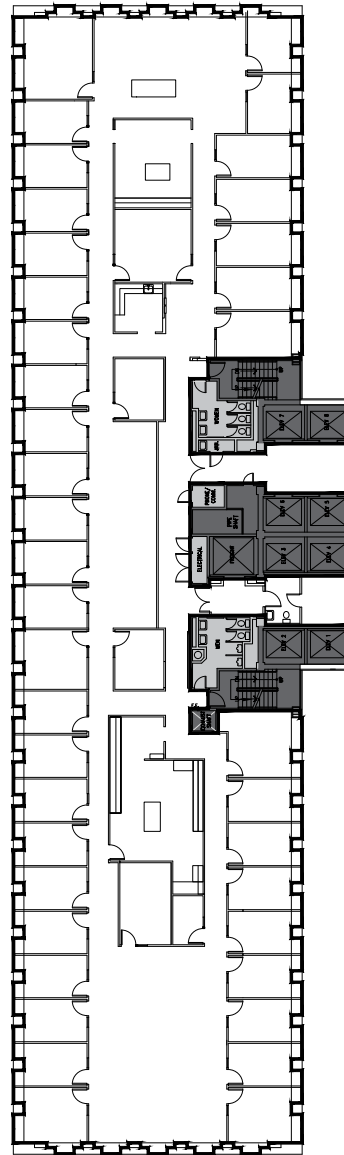
greenwood@broderickgroup.com



Broderick Group, Inc.
10500 NE 8th Street, Suite 900
Bellevue, WA 98004
main: (206) 838-5775

broderickgroup.com

The information contained herein has been given to us
by the owner or sources which we deem reliable.
We have no reason to doubt its accuracy, but we do not
guarantee it. Prospective tenants should carefully verify
all information contained herein.



SUITE 800 13,852 RSF



SPACE FEATURES

- » Available now!
- » Kitchenette
- » Open work area
- » Multiple private offices
- » Multiple conference rooms



METROTRACT
SEATTLE



PUGET SOUND PLAZA

1325 Fourth Avenue
Seattle, Washington 98101

Damon McCartney

(206) 838-7633

mccartney@broderickgroup.com

David Greenwood

(206) 838-7635

greenwood@broderickgroup.com



Broderick Group, Inc.
10500 NE 8th Street, Suite 900
Bellevue, WA 98004
main: (206) 838-5775

broderickgroup.com

The information contained herein has been given to us
by the owner or sources which we deem reliable.
We have no reason to doubt its accuracy, but we do not
guarantee it. Prospective tenants should carefully verify
all information contained herein.

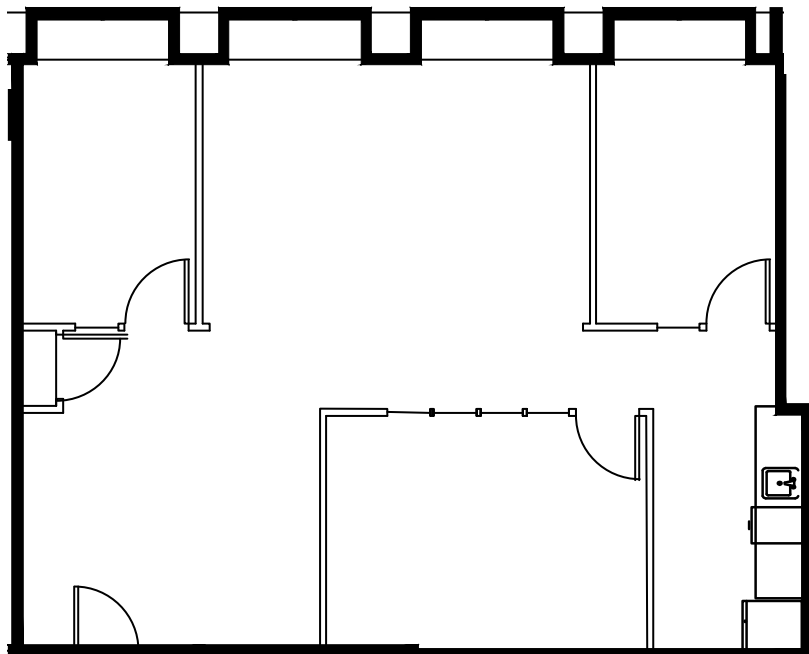


For virtual tour, visit:

bit.ly/3fsZgyx

SUITE 540

1,291 RSF



SPACE FEATURES

- » Available now!
- » Two private offices
- » Open work area
- » Conference room
- » West facing
- » Kitchenette
- » Contiguous option with Suite 535
for a total of 5,282 RSF



METROTRACT
SEATTLE



PUGET SOUND PLAZA

1325 Fourth Avenue
Seattle, Washington 98101

Damon McCartney

(206) 838-7633

mccartney@broderickgroup.com

David Greenwood

(206) 838-7635

greenwood@broderickgroup.com



Broderick Group, Inc.
10500 NE 8th Street, Suite 900
Bellevue, WA 98004
main: (206) 838-5775

broderickgroup.com

The information contained herein has been given to us
by the owner or sources which we deem reliable.
We have no reason to doubt its accuracy, but we do not
guarantee it. Prospective tenants should carefully verify
all information contained herein.

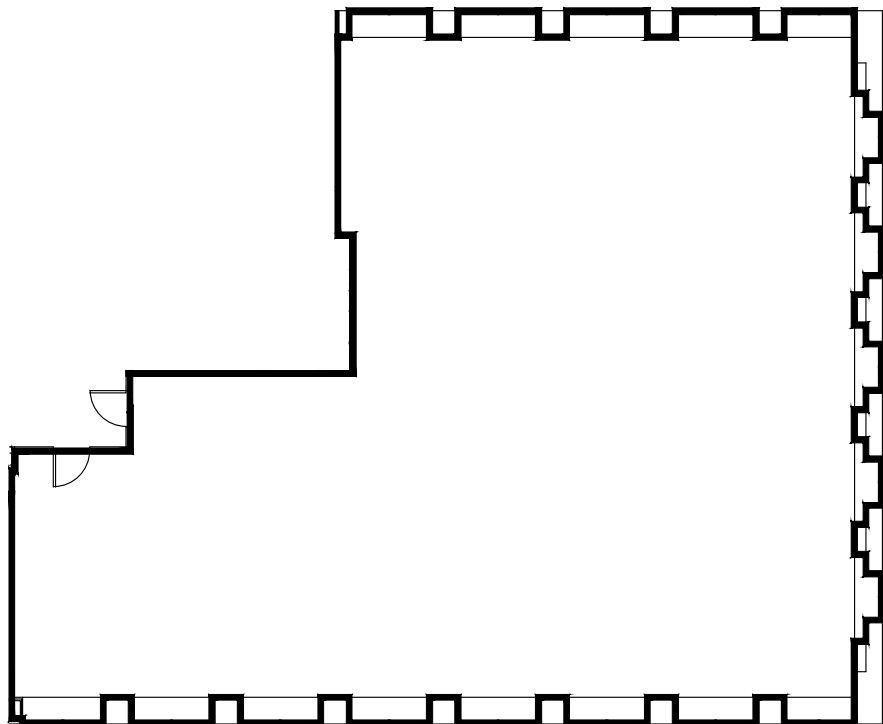


For virtual tour, visit:

bit.ly/31qUWbS

SUITE 535

3,991 RSF



SPACE FEATURES

- » Available now!
- » Warm shell condition
- » New ceiling/lighting
- » Contiguous option with Suite 540 for a total of 5,282 RSF



METROTRACT
SEATTLE



PUGET SOUND PLAZA

1325 Fourth Avenue
Seattle, Washington 98101

Damon McCartney

(206) 838-7633

mccartney@broderickgroup.com

David Greenwood

(206) 838-7635

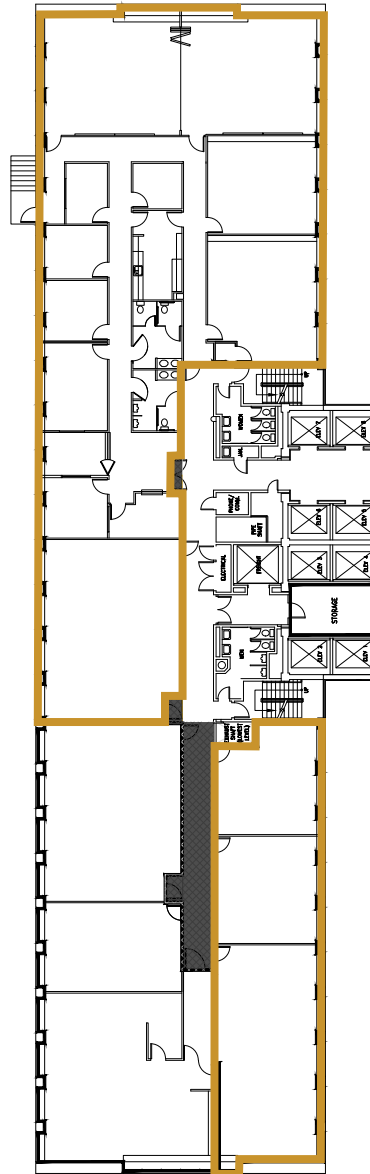
greenwood@broderickgroup.com



Broderick Group, Inc.
10500 NE 8th Street, Suite 900
Bellevue, WA 98004
main: (206) 838-5775

broderickgroup.com

The information contained herein has been given to us
by the owner or sources which we deem reliable.
We have no reason to doubt its accuracy, but we do not
guarantee it. Prospective tenants should carefully verify
all information contained herein.



SUITE 400 11,710 RSF



SPACE FEATURES

- » Available now!
- » 15 Office spaces
- » Kitchenette
- » Open work area



METROTRACT
SEATTLE



PUGET SOUND PLAZA

1325 Fourth Avenue
Seattle, Washington 98101



Damon McCartney

(206) 838-7633

mccartney@broderickgroup.com

David Greenwood

(206) 838-7635

greenwood@broderickgroup.com

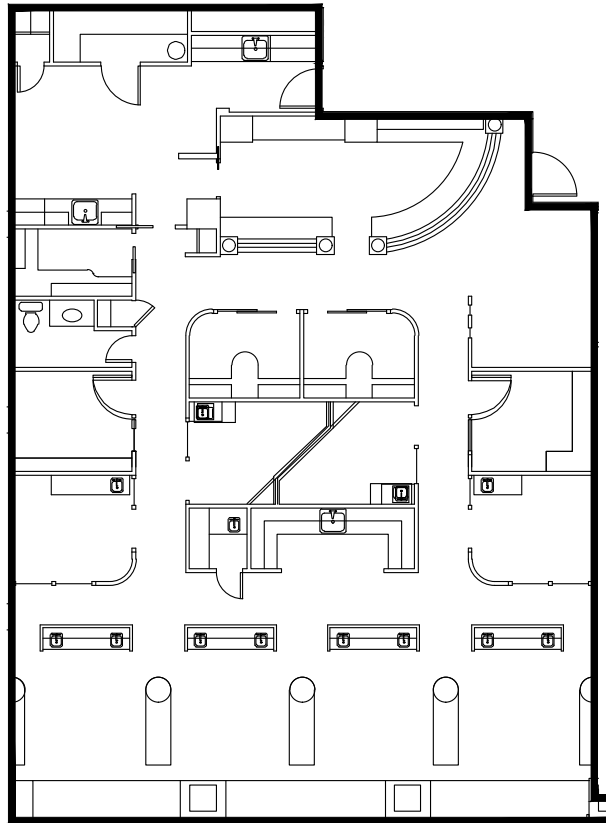


Broderick Group, Inc.
10500 NE 8th Street, Suite 900
Bellevue, WA 98004
main: (206) 838-5775

broderickgroup.com

The information contained herein has been given to us
by the owner or sources which we deem reliable.
We have no reason to doubt its accuracy, but we do not
guarantee it. Prospective tenants should carefully verify
all information contained herein.

SUITE 210 3,133 RSF



SPACE FEATURES

- » Available now!
- » Medical/ Office Space
- » Contiguous option with Suite
200 for a total of 5,732 RSF



METROTRACT
SEATTLE



PUGET SOUND PLAZA

1325 Fourth Avenue
Seattle, Washington 98101



Damon McCartney

(206) 838-7633

mccartney@broderickgroup.com

David Greenwood

(206) 838-7635

greenwood@broderickgroup.com

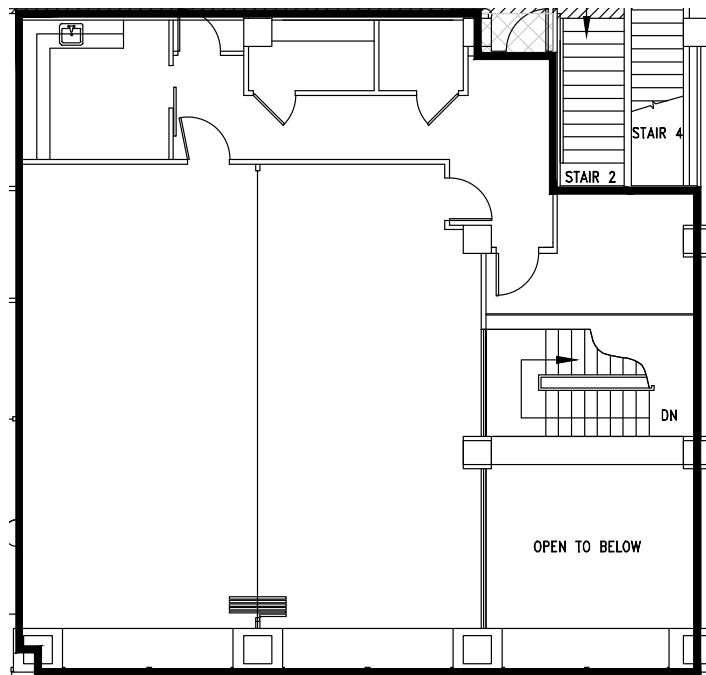


Broderick Group, Inc.
10500 NE 8th Street, Suite 900
Bellevue, WA 98004
main: (206) 838-5775

broderickgroup.com

The information contained herein has been given to us
by the owner or sources which we deem reliable.
We have no reason to doubt its accuracy, but we do not
guarantee it. Prospective tenants should carefully verify
all information contained herein.

SUITE 200 2,599 RSF



SPACE FEATURES

- » Available now!
- » Kitchenette
- » Open work area
- » Contiguous option with Suite
210 for a total of 5,732 RSF



METROTRACT
SEATTLE



METROTRACT

SEATTLE



Broderick Group, Inc.
10500 NE 8th Street, Suite 900
Bellevue, WA 98004
main: (206) 838-5775

broderickgroup.com

Damon McCartney

(206) 838-7633

mccartney@broderickgroup.com

David Greenwood

(206) 838-7635

greenwood@broderickgroup.com