

10655 NE 4TH STREET
BELLEVUE, WA

KEY BANK BUILDING



FANA
GROUP OF COMPANIES

BRODERICK
• GROUP •



BUILDING FEATURES & AMENITIES



Parking ratio up to 3.9/1,000 SF



Office suites ideal for small to mid-size tenants



On-site property management office and tenant conference room



Excellent proximity and easy access to I-90, I-405 and the 520 Bridge



Great proximity to restaurants, hotels and shopping, including Bellevue Square and The Bellevue Connection

BUILDING HIGHLIGHTS

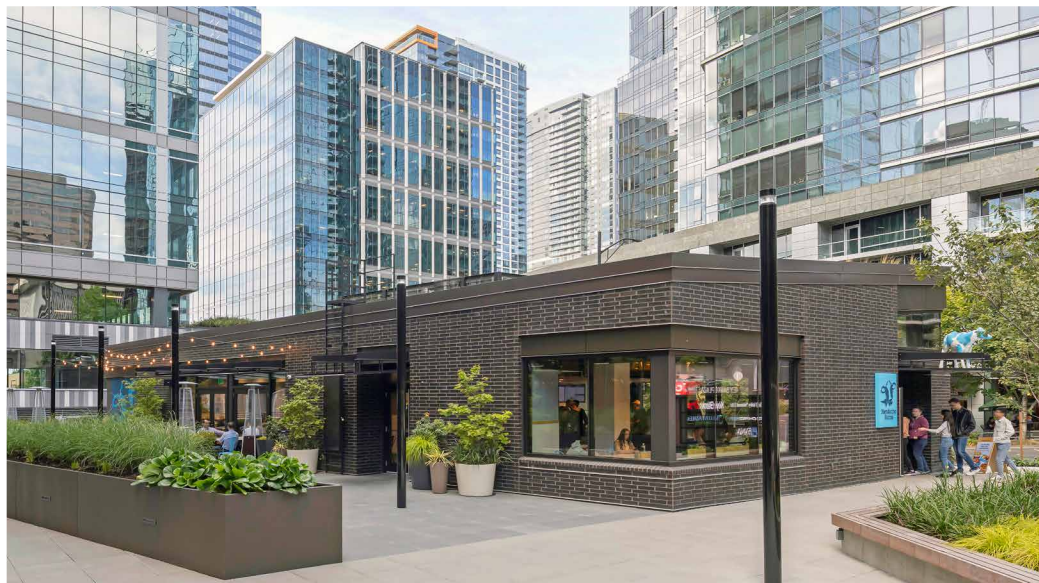
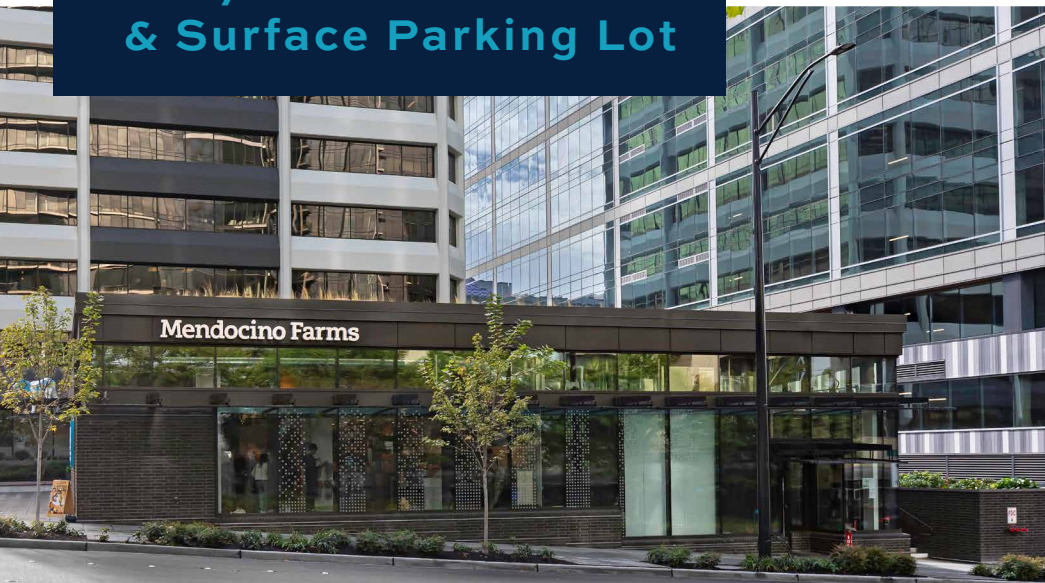
- Rare, nine-story office building located in the heart of Downtown Bellevue
- On-site property management and small floor plates make it an ideal choice for small to mid-sized tenants
- Abundant 3.9/1,000 SF parking ratio is unmatched in Downtown Bellevue



Key Bank Building has been recognized by the U.S. Government Protection Agency as a top performing commercial building based on its effective energy management practices and innovative efficiency solutions.



NOW OPEN
Fully Renovated Plaza
& Surface Parking Lot





CURRENT AVAILABILITIES

VIRTUAL TOUR	SUITE	SQUARE FEET	STARTING RATE	DESCRIPTION / FEATURES	AVAILABLE
	<u>910</u>	3,860 RSF	\$54.00 / SF, Full Service	Five (5) private offices, large conference room, large open work area, storage room, server room, kitchenette and work room.	Now
	<u>801</u>	3,957 RSF	\$54.00 / SF, Full Service	Seven (7) perimeter private offices, large conference room, open work space, reception and kitchenette.	3/1/2026
	<u>701</u>	1,922 RSF	\$54.00 / SF, Full Service	Four (4) private offices, conference room, reception area and kitchenette.	5/1/2026
	<u>L-101</u>	1,565 RSF	\$54.00 / SF, Full Service	Large open work area with high ceilings, server room and private restroom.	Now

KEY BANK BUILDING

10655 NE 4TH STREET • BELLEVUE, WA

For further information please contact
exclusive leasing agents:

COLIN TANIGAWA

425.274.4283

tanigawa@broderickgroup.com

ERIC HAEHL

425.646.5266

haehl@broderickgroup.com

The information contained herein has been given to us by the owner or sources that we deem reliable. We have no reason to doubt its accuracy, but we do not guarantee it. Prospective tenants should carefully verify all information contained herein.



KEY BANK BUILDING

10655 NE 4TH STREET • BELLEVUE, WA



For further information please contact
exclusive leasing agents:

COLIN TANIGAWA

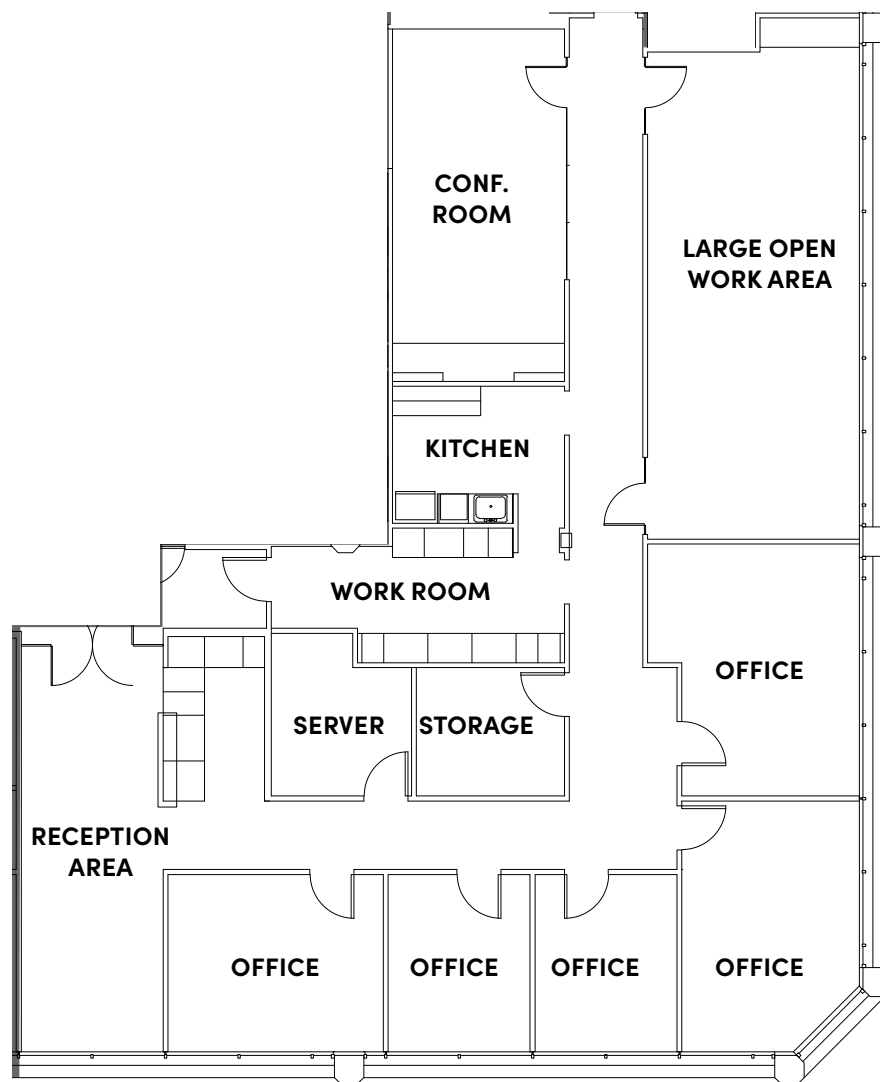
425.274.4283

tanigawa@broderickgroup.com

ERIC HAEHL

425.646.5266

haehl@broderickgroup.com



SUITE 910 3,860 SF

Reception area

Five (5) private offices

Large conference room

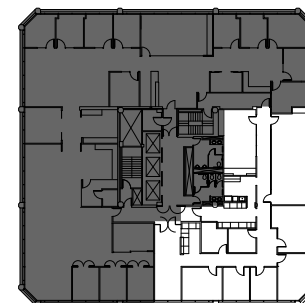
Large open work area

Storage & server room

Kitchenette & work room

Available Now

**SEE ENLARGED
FLOOR PLAN**



[↑ BACK TO AVAILABLE](#)

KEY BANK BUILDING

10655 NE 4TH STREET • BELLEVUE, WA



For further information please contact
exclusive leasing agents:

COLIN TANIGAWA

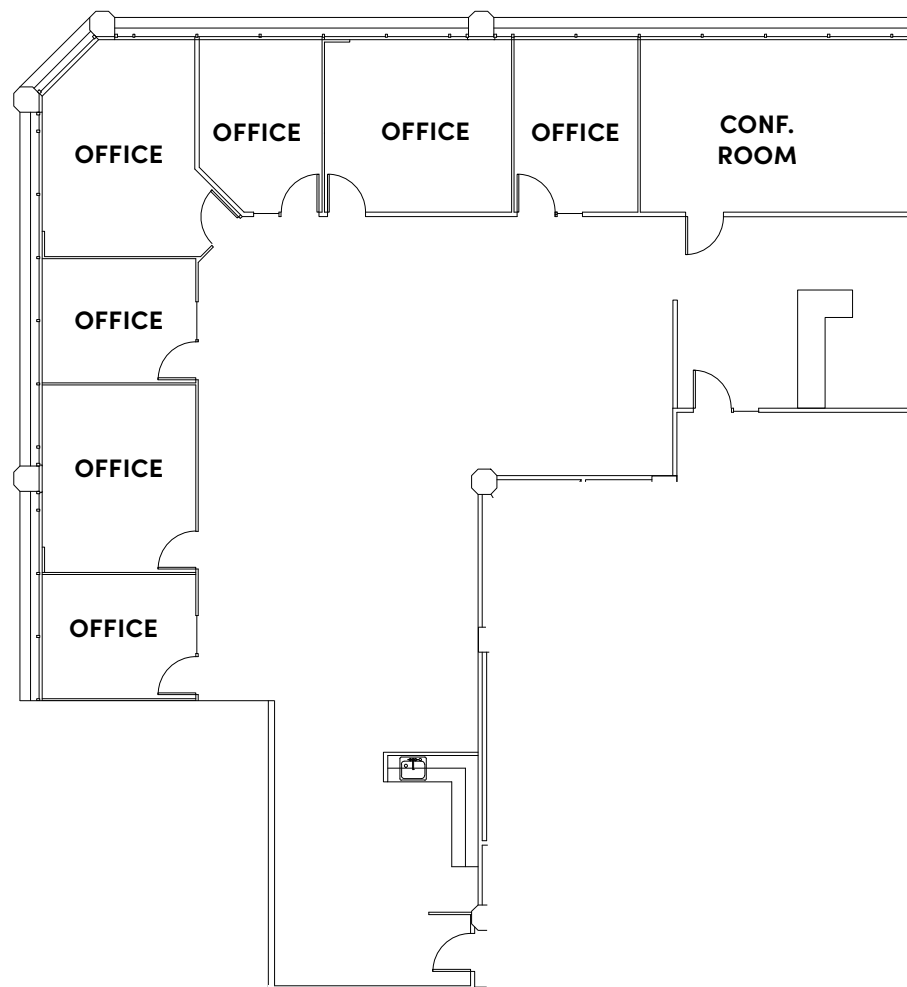
425.274.4283

tanigawa@broderickgroup.com

ERIC HAEHL

425.646.5266

haehl@broderickgroup.com



SUITE 801 3,957 SF

Seven (7) perimeter private offices

Large conference room

Open work space

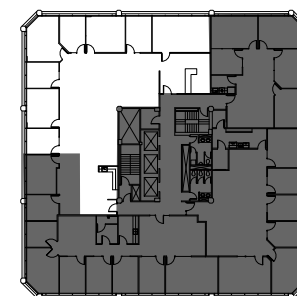
Reception

Kitchenette

Cityscape views

Available 3/1/2026

**SEE ENLARGED
FLOOR PLAN**



[↑ BACK TO AVAILABLE](#)

KEY BANK BUILDING

10655 NE 4TH STREET • BELLEVUE, WA



For further information please contact
exclusive leasing agents:

COLIN TANIGAWA

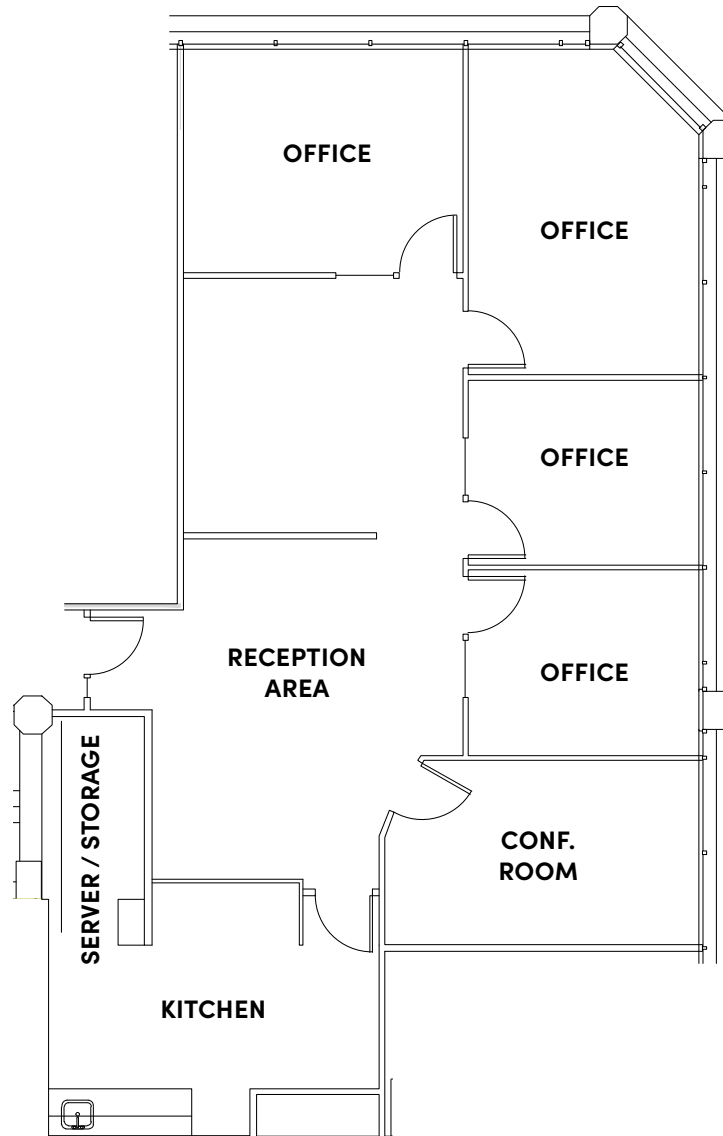
425.274.4283

tanigawa@broderickgroup.com

ERIC HAEHL

425.646.5266

haehl@broderickgroup.com



SUITE 701 1,922 SF

Four (4) private offices

Conference room

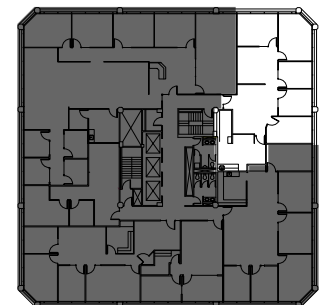
Reception area

Storage & server room

Kitchenette

Available 5/1/2026

**SEE ENLARGED
FLOOR PLAN**



[↑ BACK TO AVAILABLE](#)



SUITE L-101

1,565 SF

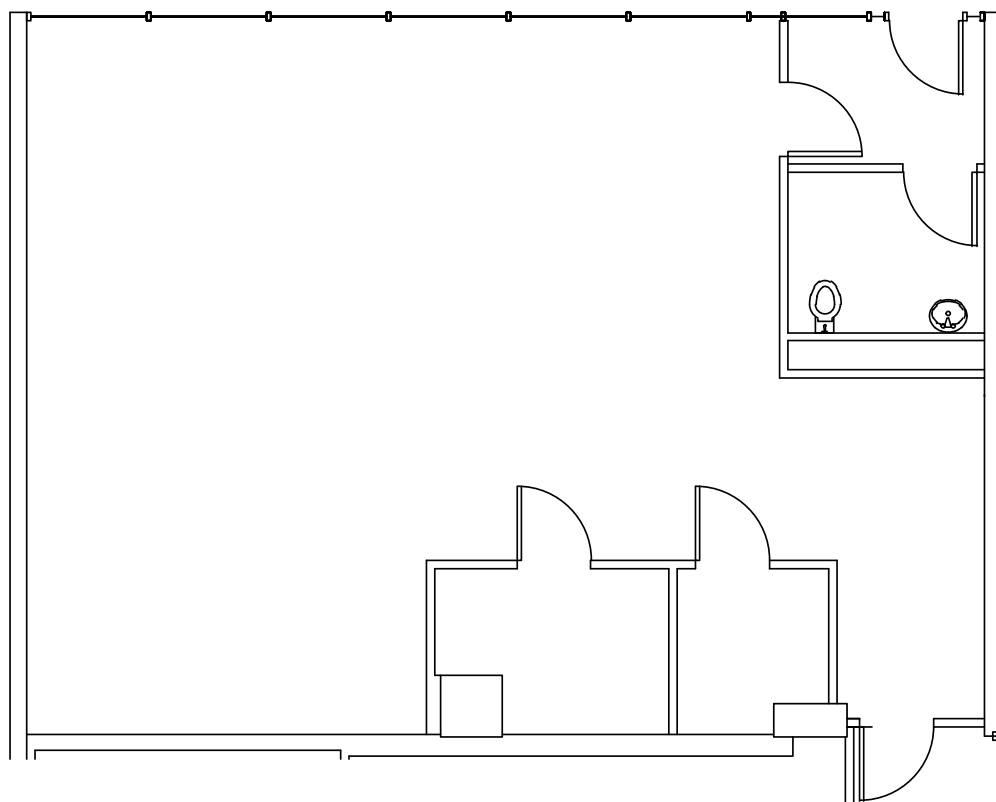
Large open work area

High ceilings

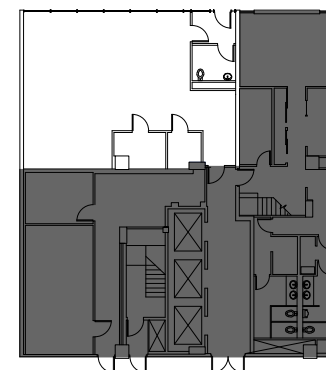
Server room

Private restroom

Available Now



**SEE ENLARGED
FLOOR PLAN**



[↑ BACK TO AVAILABLE](#)

KEY BANK BUILDING

10655 NE 4TH STREET • BELLEVUE, WA



For further information please contact
exclusive leasing agents:

COLIN TANIGAWA

425.274.4283

tanigawa@broderickgroup.com

ERIC HAEHL

425.646.5266

haehl@broderickgroup.com

AMENITIES MAP

