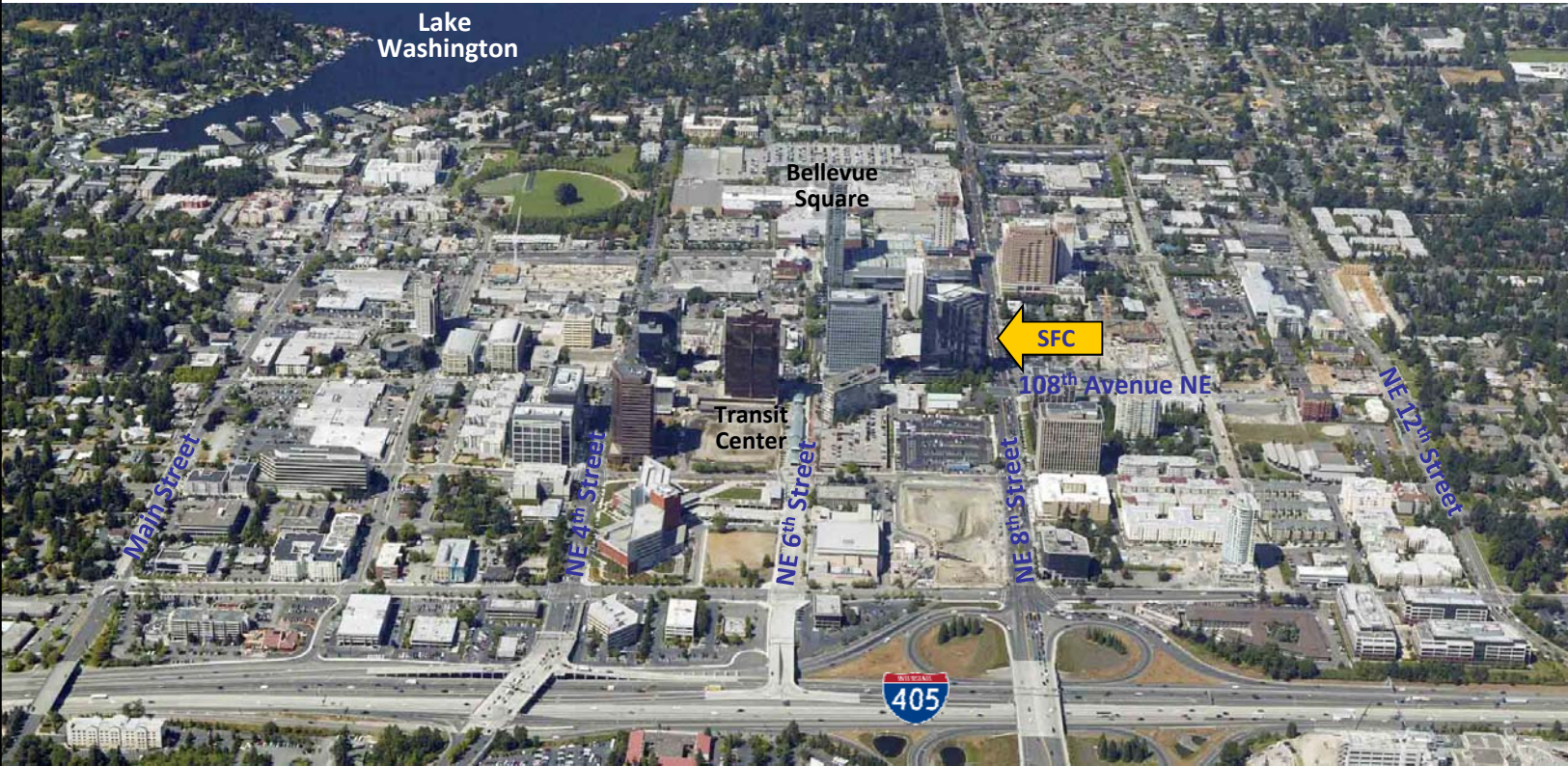


Symetra Financial Center



Symetra Financial Center

777 108th Avenue NE ▪ Bellevue, WA 98004



FEATURES

- 25-story building prominently located in the heart of the Bellevue Business District
- Multi-faceted glass facade of light blue reflective glass and a landscaped exterior, with arboretum quality flowers and trees, as well as seating and fountains
- Excellent views of downtown Bellevue, Lake Washington, Olympic and Cascade Mountains, and Mount Rainier

AMENITIES

- Harbor Club
- Extreme Fitness
- Fitness Center
- Banking
- Conference facilities

LOCATION

- Located on the corner of NE 8th Street and 110th Avenue NE
- Easy access to Interstate 405 and public transportation
- Nearby conveniences include the Transit Center, Pedestrian Corridor, restaurants, hotels, and the Bellevue Convention Center

FLOOR PLANS

- 445,089 rentable square feet in this Class-A office building
- Typical floor plates are 18,500 square feet

LEASING

- Broderick Group, Inc.



Symetra Financial Center

777 108th Avenue NE ▪ Bellevue, WA 98004

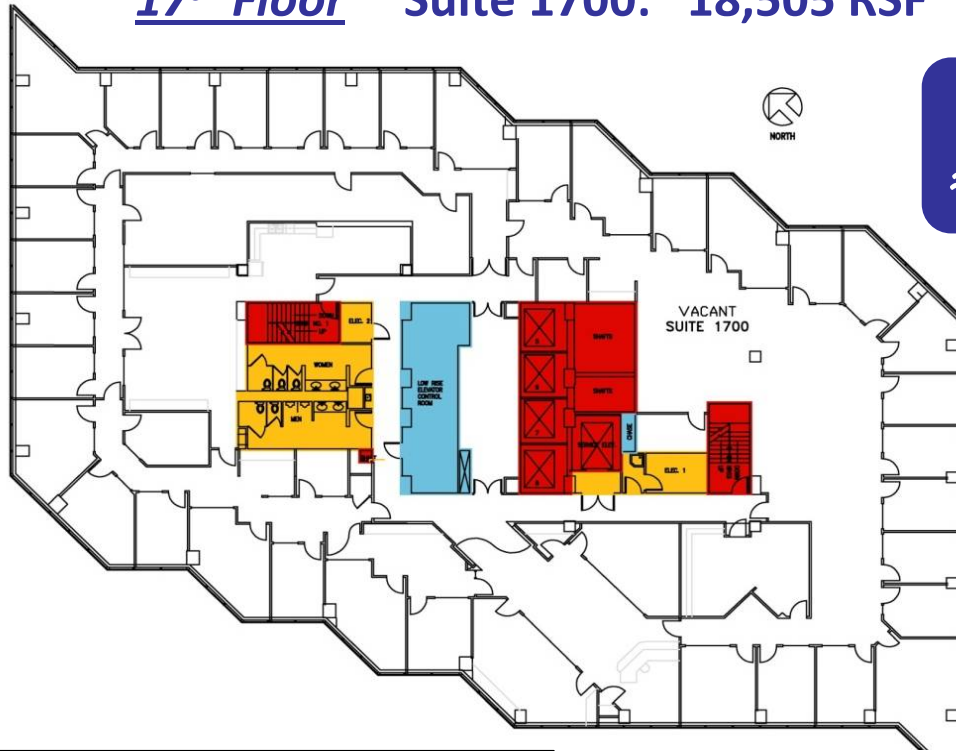
| <u>Suite</u> | <u>RSF Available</u> | <u>Date Available</u> | <u>Full Service Rental Rate</u> | <u>Description</u> |
|---|----------------------|-----------------------|---------------------------------|--|
| 1700 | 18,505 RSF | Immediately | \$33.00 - \$36.00/RSF | Full Floor, divisible to ≈10,000 SF. Heavily built-out space with 36 private offices, kitchen and a large computer/server room. Great views! |
| 1830 | 3,361 RSF | Immediately | \$33.00 - \$36.00/RSF | Mostly open space with two private offices, conference room, kitchen and training room. Can be combined with Suite 1850 for 7,387 RSF Contiguous. |
| 1850 | 4,026 RSF | Immediately | \$33.00 - \$36.00/RSF | Four private offices, reception area plus open space. Can be combined with Suite 1830 for 7,387 RSF Contiguous. |
| 1870 | 829 RSF | Immediately | \$33.00 - \$36.00/RSF | One large executive office, open area. Can be combined with Suite 1875 for 3,289 RSF Contiguous. |
| 1875 | 2,460 RSF | Immediately | \$33.00 - \$36.00/RSF | Large exterior private offices with Cascade views. Can be combined with Suite 1870 for 3,289 RSF Contiguous. |
| 10,676 RSF Contiguous on Floor 18 (Suites 1830/1850/1870/1875) | | | | |
| 2120 | 3,592 RSF | Immediately | \$33.00 - \$36.00/RSF | Mostly open build-out with five (5) perimeter privates and open interior. |
| 2170 | 2,968 RSF | Immediately | \$33.00 - \$36.00/RSF | Heavy build-out with executive-sized offices. |

Symetra Financial Center

777 108th Avenue NE • Bellevue, WA 98004

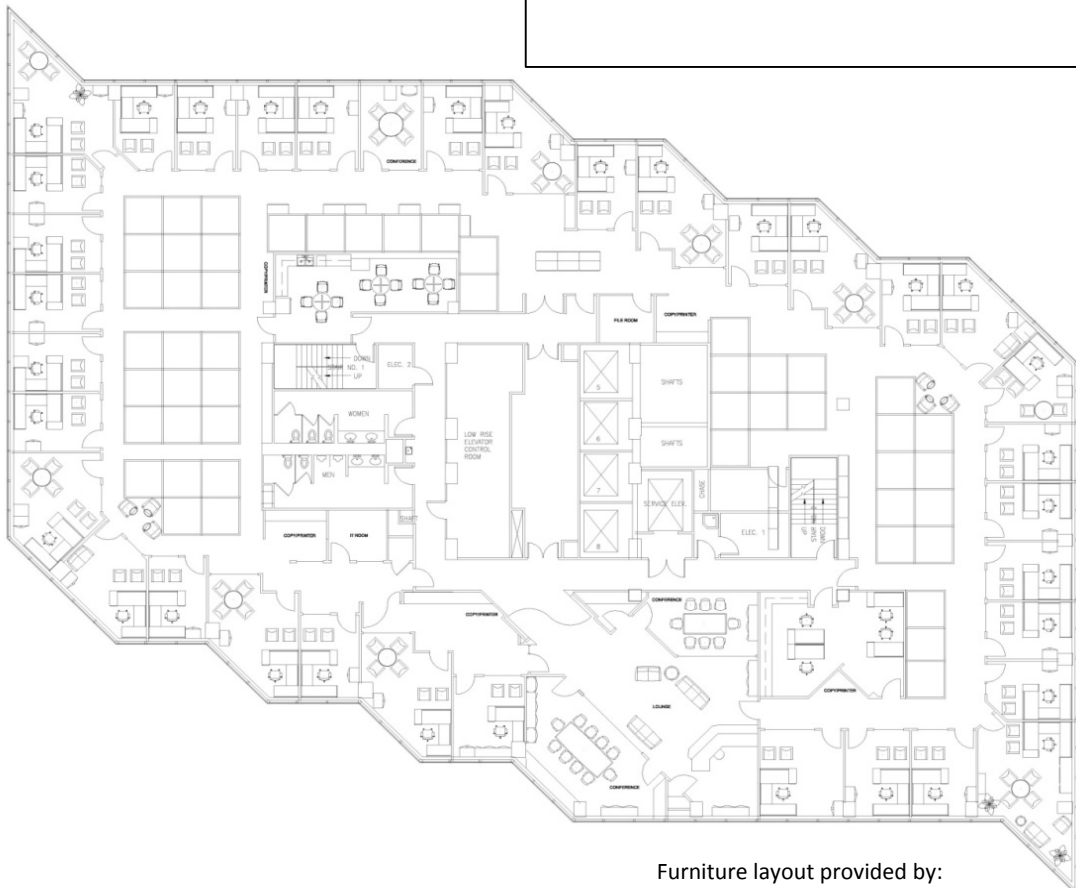
17th Floor Suite 1700: 18,505 RSF

As Built



**Divisible to
≈10,000 RSF**

Test Fit



- 50 6X6 WORKSTATIONS
- 35 PRIVATE OFFICES
- 1 SHARED OFFICES
- 3 CONFERENCE ROOMS
- 1 RECEPTION STATION
- 1 LOUNGE
- 1 BREAK ROOM/KITCHEN
- 1 IT ROOM
- 1 FILE ROOM

88 EMPLOYEES

210 RSF PER EMPLOYEE

Furniture layout provided by:



NUMARK OFFICE
INTERIORS

NUMARK OFFICE.COM

BRODERICK
GROUP

MATT SCHRECK | 425.646.5232
schreck@broderickgroup.com

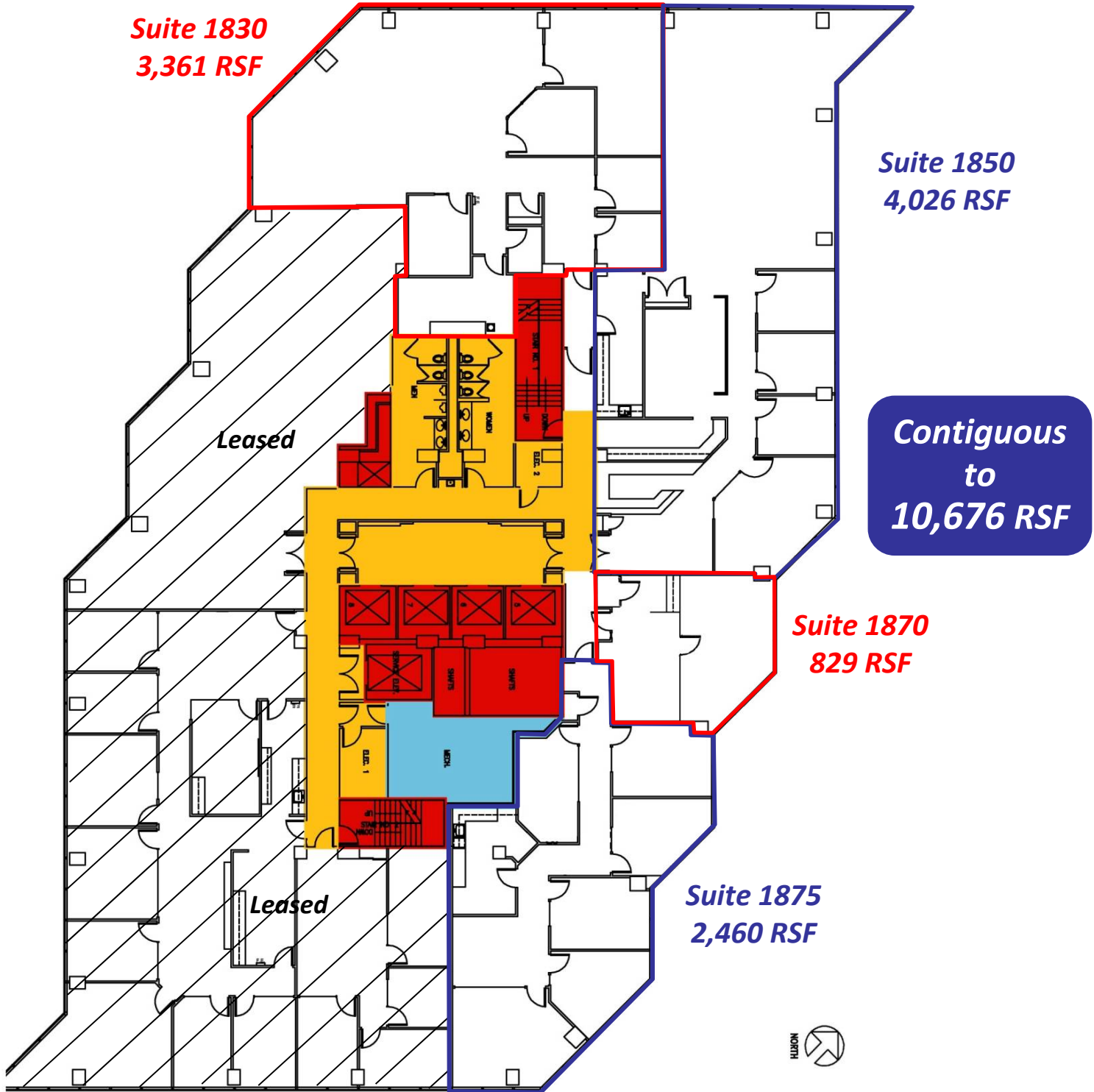
GRANT YERKE | 425.646.5264
yerke@broderickgroup.com

Symetra Financial Center

777 108th Avenue NE ▪ Bellevue, WA 98004

18th Floor

Suite 1870: 829 RSF
Suite 1875: 2,460 RSF
Suite 1850: 4,026 RSF
Suite 1830: 3,361 RSF



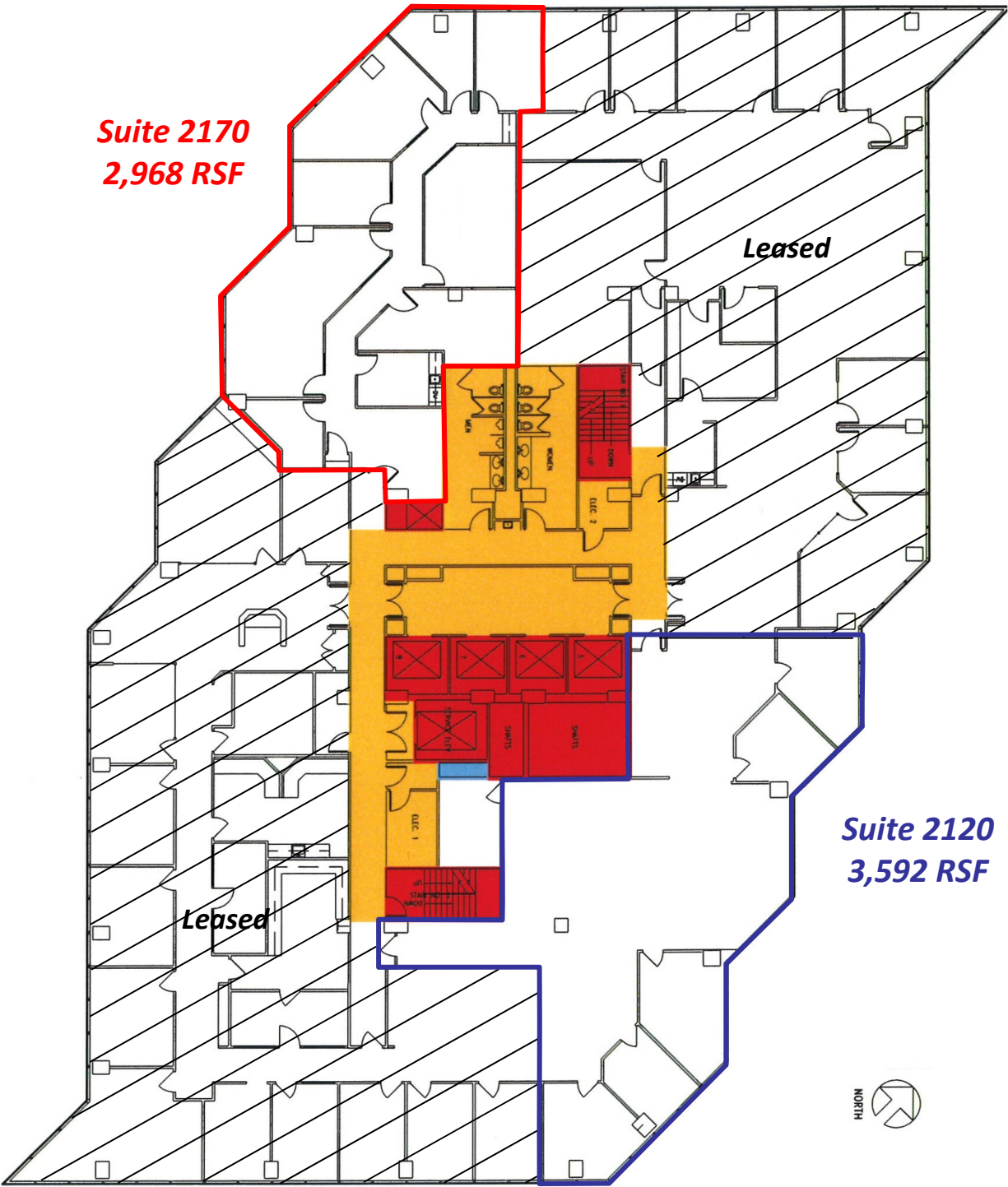
Symetra Financial Center

777 108th Avenue NE ▪ Bellevue, WA 98004

21st Floor

Suite 2120: 3,592 RSF

Suite 2170: 2,968 RSF



Suite 2170
2,968 RSF

Leased

Suite 2120
3,592 RSF

Leased

