

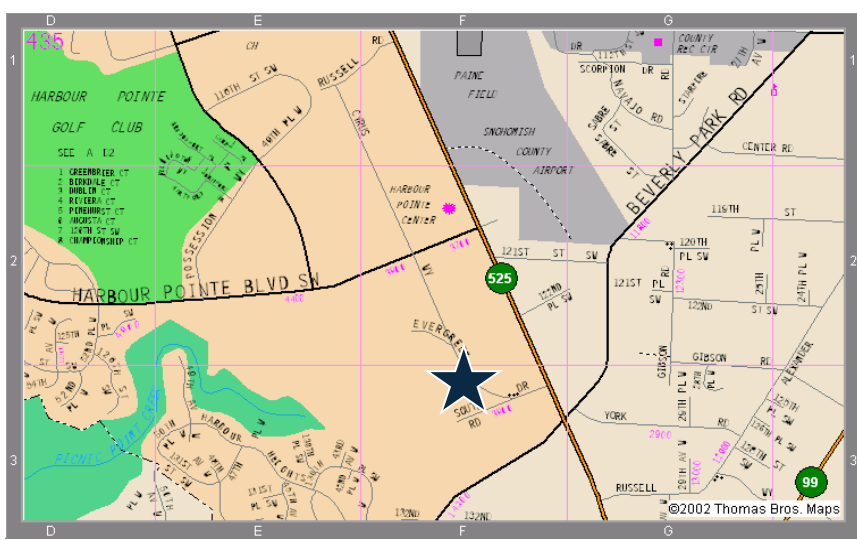
# SEACREST BUILDING

12521 Evergreen Drive • Mukilteo, WA



**Suite A: 4,672 SF Available**  
**2,400 SF Office / 2,272 SF Warehouse**  
**Grade Level Loading**

- 2,400 SF Two-Story Office
  - 7 private offices
  - 2 open areas
  - Lunch room
- 2,272 SF Warehouse
  - 18 foot clear
- Very functional space (space plan on back)
- Convenient location less than one block from Mukilteo Speedway
- Oversized grade level loading door
- Plenty of parking
- Close to retail services/restaurants and Harbour Pointe amenities
- Central North End location
- Aggressive rental rates
- \$1.00/SF - Office; \$0.50/SF - Warehouse
- Low NNN expenses of \$0.17/SF



For more information or to schedule a tour, please contact:



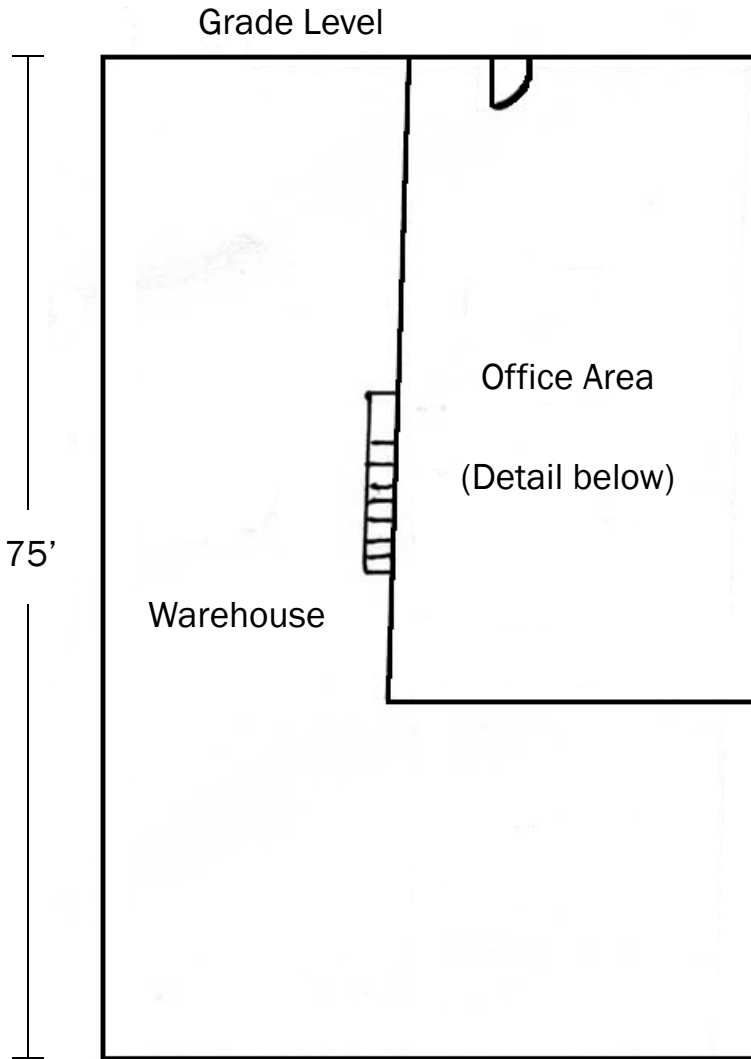
**AL HODGE**  
425.646.5240

[hodge@broderickgroup.com](mailto:hodge@broderickgroup.com)

The information contained herein has been given to us by the owner or sources that we deem reliable. We have no reason to doubt its accuracy, but we do not guarantee it. Prospective tenants should carefully verify all information contained herein.

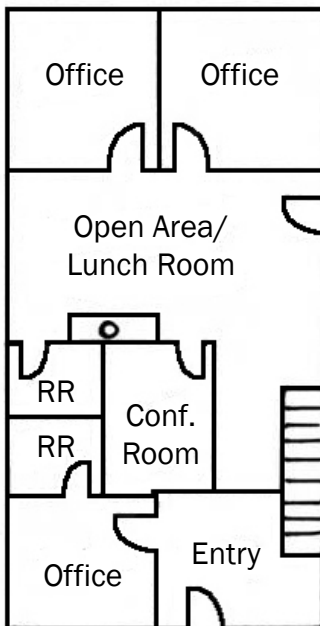
# SEACREST BUILDING

12521 Evergreen Drive · Mukilteo, WA



**Suite A**  
**4,672 SF Available**  
2,400 SF Office  
2,272 SF Warehouse  
Oversized grade level loading door

## 1<sup>st</sup> Floor



- Entry area
- 7 private offices
- Large open area
- Cabinets/sinks/counters built in
- Skylights
- Easy access to warehouse

## 2<sup>nd</sup> Floor

